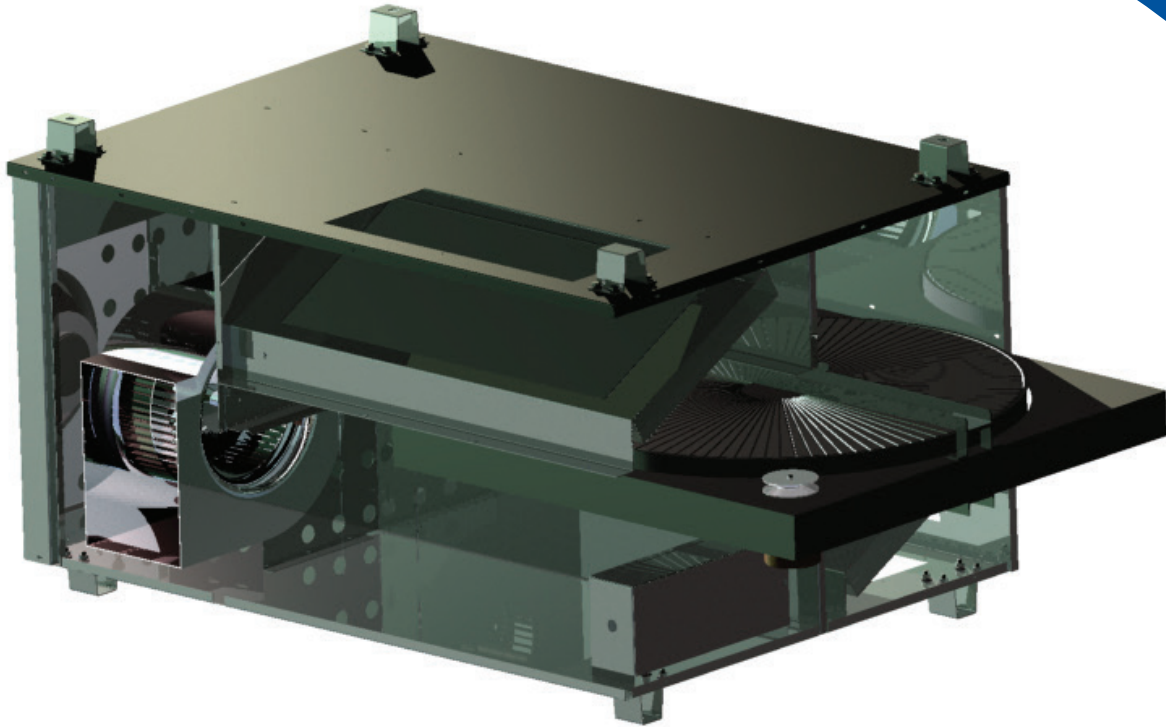


Mini Energy Recovery Ventilators



Using desiccant wheel technology provides energy recovery benefits

Energy savings, exceptional payback and improved comfort

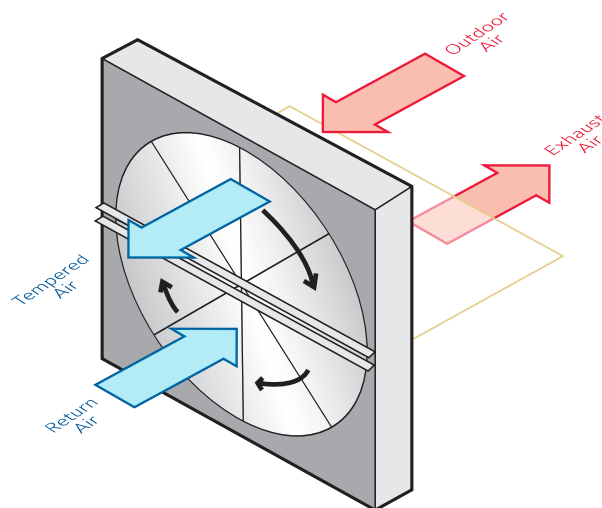
Investing in energy recovery wheels in HVAC systems can provide payback in savings and comfort.

- Initial cost savings can be achieved by pre-conditioning the outdoor air, which can reduce the cooling load and tonnage required to meet that load. Free software is available at www.ruskin.com to calculate the load reductions and provide the energy and dollar savings in most areas of the United States and Canada.
- Most HVAC systems will use approximately 80% of the load to control space humidity. The Ruskin desiccant wheel technology will allow nearly 75% of the humidity entering through the outside air path to be exhausted to the outside through the exhaust airstream, which not only saves energy but improves comfort.

The YORK® mini ERVs are 60%+ effective and perfect for applications requiring up to 1000 CFM for ventilation. This range of ventilation requirement is typically found in classrooms, meeting rooms, and small retail. The MiniVentilator is designed for indoor installation and can be floor or ceiling mounted. A removable panel is utilized to allow for easy access to the enthalpy wheel and filters.

Standard design features on all models

- Up to 1000 cfm
- Designed for indoor use
- Painted cabinet
- Hang or base mounting
- Provides air filtration with MERV 8 filters on intake and exhaust
- Access to filters and enthalpy wheel without tools
- Closed cell insulated cabinet
- Flanges on all intake / discharge connections
- Outdoor air intake can alternate between top and adjacent side
- Return air intake can alternate between bottom and adjacent side
- 110V single phase
- Motors thermally protected and suitable for use with speed controller
- Effectiveness of 60% or higher using AHRI certified enthalpy wheels



Factory installed options on MV250X, MV450X, MV750X

- Frost control
- Wheel rotation sensor
- Start, stop, jog function

Performance

MV 250/250X

External Static Pressure		0.0	0.1	0.2	0.3	0.4	0.5	0.6	0.7	0.8	0.9	1.0
CFM	Low	498	479	459	435	411	384	347	307	263	218	175
	High	592	565	530	496	463	431	398	356	311	262	218

MV 450/450X

External Static Pressure		0.0	0.1	0.2	0.3	0.4	0.5	0.6	0.7	0.8	0.9	1.0
CFM	Low	656	640	625	609	590	570	552	538	511	477	440
	Medium	729	708	690	671	649	627	605	582	560	530	495
	High	783	765	740	721	700	678	650	622	598	580	560

MV 750/750X

External Static Pressure		0.0	0.1	0.2	0.3	0.4	0.5	0.6	0.7	0.8	0.9	1.0
CFM	Low	823	822	821	819	808	790	778	762	755	738	718
	Medium	997	992	985	975	960	940	928	905	884	872	850
	High	1162	1145	1130	1104	1095	1090	1068	1047	1020	998	967

Variable speed controller is available for lower flows.

Printed on recycled paper.

Johnson Controls, the Johnson Controls logo, and YORK® are trademarks of Johnson Controls, Inc., or its affiliates, in the United States of American and/or other countries.

©2015 Johnson Controls, Inc., P.O. Box 423, Milwaukee, WI 53201 Printed in USA PUBL-7590
www.johnsoncontrols.com

