

VRF

Technical Data Book

DVM S OAP Duct for North America
(R410A, 60Hz, H/P)



Model: AM0**JNESCH/AA

Nomenclature

Indoor Units

Model Names

AM	072	J	N	E	S	C	H	/	**
(1)	(2)	(3)	(4)	(5)	(6)	(7)	(8)		Buyer

(1) Classification

AM	DVM
----	-----

(2) Capacity

x 1/10 kW (3 digits)
x 1,000 Btu/h (3 digits)

(3) Version

F	2013
H	2014
J	2015

(4) Product type

N	Indoor unit
X	Outdoor unit

(5) Product notation

1	1Way Cassette
2	2Way Cassette
N	4Way Cassette (600x600)
4	4Way Cassette
L	LSP (Slim) Duct
M	MSP Duct
H	HSP Duct
C	Ceiling
T	Neo Forte
E	Outdoor Air Processing Duct

(6) Feature

S	Standard
P	Premium
F	Flagship

(7) Rating voltage

C	1Φ, 208~230V, 60Hz
H	3Φ, 400V, 60Hz

(8) Mode

H	Heat Pump
R	Heat Recovery
C	Cooling Only

OAP Duct

1 Specifications

2 Dimensional drawing

3 Electrical wiring diagram

4 Sound pressure level

1 Specifications

OAP Duct

Type				OAP Duct	OAP Duct
Model Name				AM072JNESCH/AA	AM096JNESCH/AA
Power Supply			Ø, #, V, Hz	1,2,208-230,60	1,2,208-230,60
Mode				HP	HP
Performance	Ton			6.00	8.00
	Capacity (Nominal)	Cooling	kW	21.10	28.13
			Btu/h	72,000	96,000
			US RT	6.00	8.00
	Capacity (Nominal)	Heating	kW	13.77	17.29
			Btu/h	47,000	59,000
US RT			3.92	4.92	
Power	Power Input (Nominal)	Cooling	W	360.00	450.00
		Heating		360.00	450.00
	Current Input (Nominal)	Cooling	A	2.60	3.10
		Heating		2.60	3.10
Fan	Motor	Type	-	Sirocco Fan	Sirocco Fan
		Output x n	W	630	630
	Air Flow	High	CFM	988.85	1236.1
	External Pressure	Min / Std / Max	Pa	49.00 / 245.00 / 294.00	49.00 / 245.00 / 294.00
In Wg			0.20 / 0.98 / 1.18	0.20 / 0.98 / 1.18	
Piping Connections	Liquid Pipe	Ø, mm	9.52	9.52	
		Ø, inch	3/8"	3/8"	
	Gas Pipe	Ø, mm	19.05	22.22	
		Ø, inch	3/4"	7/8"	
Drain Pipe	Ø, mm	VP25 (OD 32, ID 25)	VP25 (OD 32, ID 25)		
Field Wiring	Power Source Wire		mm ²	-	-
	Transmission Cable		mm ²	-	-
Refrigerant	Type		-	R410A	R410A
	Control Method		-	EEV INCLUDED	EEV INCLUDED
Sound	Pressure	High	dB(A)	47.0	47.0
	Power	Cooling		-	-
Dimensions	Net Weight		kg	90.00	90.00
			lbs	198.42	198.42
	Shipping Weight		kg	100.00	100.00
			lbs	220.46	220.46
Net Dimensions (WxHxD)		mm	1,465 x 460 x 910	1,465 x 460 x 910	
		inch	57.68 x 18.11 x 35.83	57.68 x 18.11 x 35.83	
Shipping Dimensions (WxHxD)		mm	1,612 x 519 x 984	1,612 x 519 x 984	
		inch	63.46 x 20.43 x 38.74	63.46 x 20.43 x 38.74	
Panel Size	Panel Model		-	-	-
	Panel Net Weight		kg	-	-
			lbs	-	-
	Shipping Weight		kg	-	-
			lbs	-	-
	Net Dimensions (WxHxD)		mm	-	-
inch			-	-	
Discharge Temperature Control		Cooling	°F	64.4 °F (Default) / 55.4 ~ 77 °F (Setting Range)	
		Heating	°F	77 °F (Default) / 64 ~ 86 °F (Setting Range)	
Additional Accessories	Drain pump	Drain pump	-	MDP-G075SP	MDP-G075SP
		Max. lifting Height / Displacement	mm / liter / h	-	-
	Filter Box		-	-	FB-OAP

[Note]

- Nominal capacity are based on (Refrigerant Piping : 25ft , Level Differences : 0ft);
- . Nominal Cooling : Outdoor temperature(°F) 95DB / 82.4WB
- . Nominal Heating : Outdoor temperature(°F) 32DB / 26.8WB
- Sound level was acquired in an anechoic room. Thus actual noise level may be different depending on the installation conditions.
- Specifications may be subject to change without prior notice.
- OAP duct can use discharge temperature control and target temperature can be changed by wired remote controller(MWR-WE10N) or DMS 2 (Depending on indoor/outdoor temperature or installation condition, actual discharge temperature may not be exactly controlled)

1 Specifications

OAP Duct

1) AM072JNESCH/AA

1) Cooling

OD Temp.	59		62.6		68		73.4		78.8		82.4		86		89.6		96.8	
	TC	SHC	TC	SHC	TC	SHC	TC	SHC	TC	SHC	TC	SHC	TC	SHC	TC	SHC	TC	SHC
°F DB	Cooling Capacity(kBTU/h)																	
68	18.3	15.1	19.6	12.9	-	-	-	-	-	-	-	-	-	-	-	-	-	-
71.6	18.3	15.8	19.6	13.8	26.4	12.5	-	-	-	-	-	-	-	-	-	-	-	-
77	18.3	16.4	19.6	14.8	26.4	15.1	34.7	15.4	-	-	-	-	-	-	-	-	-	-
80.6	-	-	19.6	18.3	26.0	19.0	34.4	19.0	-	-	-	-	-	-	-	-	-	-
84.2	-	-	-	-	26.0	22.5	33.8	22.5	56.6	23.1	-	-	-	-	-	-	-	-
87.8	-	-	-	-	25.7	25.1	33.8	26.4	56.6	26.7	72.7	27.0	-	-	-	-	-	-
91.4	-	-	-	-	25.7	25.7	34.1	29.9	56.3	30.5	72.0	30.9	84.2	29.6	-	-	-	-
95	-	-	-	-	-	-	34.1	33.4	56.3	34.1	72.0	34.7	84.2	32.5	89.4	28.9	-	-
98.6	-	-	-	-	-	-	34.0	34.1	55.4	36.3	68.6	36.6	78.3	33.4	84.0	30.2	86.2	20.6
104	-	-	-	-	-	-	-	-	53.6	37.3	58.5	37.6	61.1	32.8	67.5	30.2	68.9	21.2

2) Heating

OD Temp.	°F WB								
	19.4	23	26.8	32	35.6	39.2	42.8	50	57.2
°F DB	Heating Capacity(kBTU/h)								
23	52.4	52.4	-	-	-	-	-	-	-
32	-	-	47.0	-	-	-	-	-	-
37.4	-	-	41.2	41.2	-	-	-	-	-
44.6	-	-	-	33.8	33.8	33.8	-	-	-
51.8	-	-	-	-	26.4	26.4	26.4	-	-
59	-	-	-	-	-	18.9	18.9	18.9	-

[Note]

- OAP duct can use discharge temperature control
 - Target temperature can be changed by wired remote controller(MWR-WE10N) or DMS 2
 - . Cooling - Factory default : 18 °C (64.4°F) / Setting Range : 13 ~ 25 °C (55.4 ~ 77 °F)
 - . Heating - Factory default : 25 °C (77°F) / Setting Range : 18 ~ 30 °C (64 ~ 86 °F)
- (Depending on indoor/outdoor temperature or installation condition, actual discharge temperature may not be exactly controlled.)

1 Specifications

OAP Duct

2) AM096JNESCH/AA

1) Cooling

OD Temp.	59		62.6		68		73.4		78.8		82.4		86		89.6		96.8	
	TC	SHC	TC	SHC	TC	SHC	TC	SHC	TC	SHC	TC	SHC	TC	SHC	TC	SHC	TC	SHC
°F DB	Cooling Capacity(kBTU/h)																	
68	24.4	17.1	26.1	15.1	-	-	-	-	-	-	-	-	-	-	-	-	-	-
71.6	24.4	18.9	26.1	16.5	35.3	14.1	-	-	-	-	-	-	-	-	-	-	-	-
77	24.4	19.9	26.1	17.5	35.0	17.8	46.3	18.5	-	-	-	-	-	-	-	-	-	-
80.6	-	-	26.1	22.3	34.6	22.6	46.0	23.3	-	-	-	-	-	-	-	-	-	-
84.2	-	-	-	-	34.6	27.4	46.0	28.5	75.5	31.5	-	-	-	-	-	-	-	-
87.8	-	-	-	-	34.3	32.2	45.6	33.3	75.1	36.7	96.7	37.4	-	-	-	-	-	-
91.4	-	-	-	-	34.3	34.3	45.6	38.1	75.1	41.5	96.0	42.2	112.5	40.1				
95	-	-	-	-	-	-	45.3	42.9	74.8	44.9	96.0	47.3	112.2	44.2	119.4	39.4		
98.6	-	-	-	-	-	-	45.3	45.3	73.9	48.0	91.5	50.4	104.5	45.9	112.0	41.8	114.9	28.8
104	-	-	-	-	-	-	-	-	71.4	49.4	78.1	51.4	81.5	45.3	90.0	41.5	91.9	29.5

2) Heating

OD Temp.	°F WB								
	19.4	23	26.8	32	35.6	39.2	42.8	50	57.2
°F DB	Heating Capacity(kBTU/h)								
23	65.1	65.1	-	-	-	-	-	-	-
32	-	-	59.0	-	-	-	-	-	-
37.4	-	-	51.9	51.9	51.9	-	-	-	-
44.6	-	-	-	-	42.4	42.4	42.4	-	-
51.8	-	-	-	-	-	33.2	33.2	33.2	-
59	-	-	-	-	-	-	23.7	23.7	23.7

[Note]

- OAP duct can use discharge temperature control
- Target temperature can be changed by wired remote controller(MWR-WE10N) or DMS 2
- . Cooling - Factory default : 18 °C (64.4°F) / Setting Range : 13 ~ 25 °C (55.4 ~ 77 °F)
- . Heating - Factory default : 25 °C (77°F) / Setting Range : 18 ~ 30 °C (64 ~ 86 °F)
- (Depending on indoor/outdoor temperature or installation condition, actual discharge temperature may not be exactly controlled.)

2 Dimensional drawing

OAP Duct

AM072JNESCH/AA, AM096JNESCH/AA

Units : mm / inches

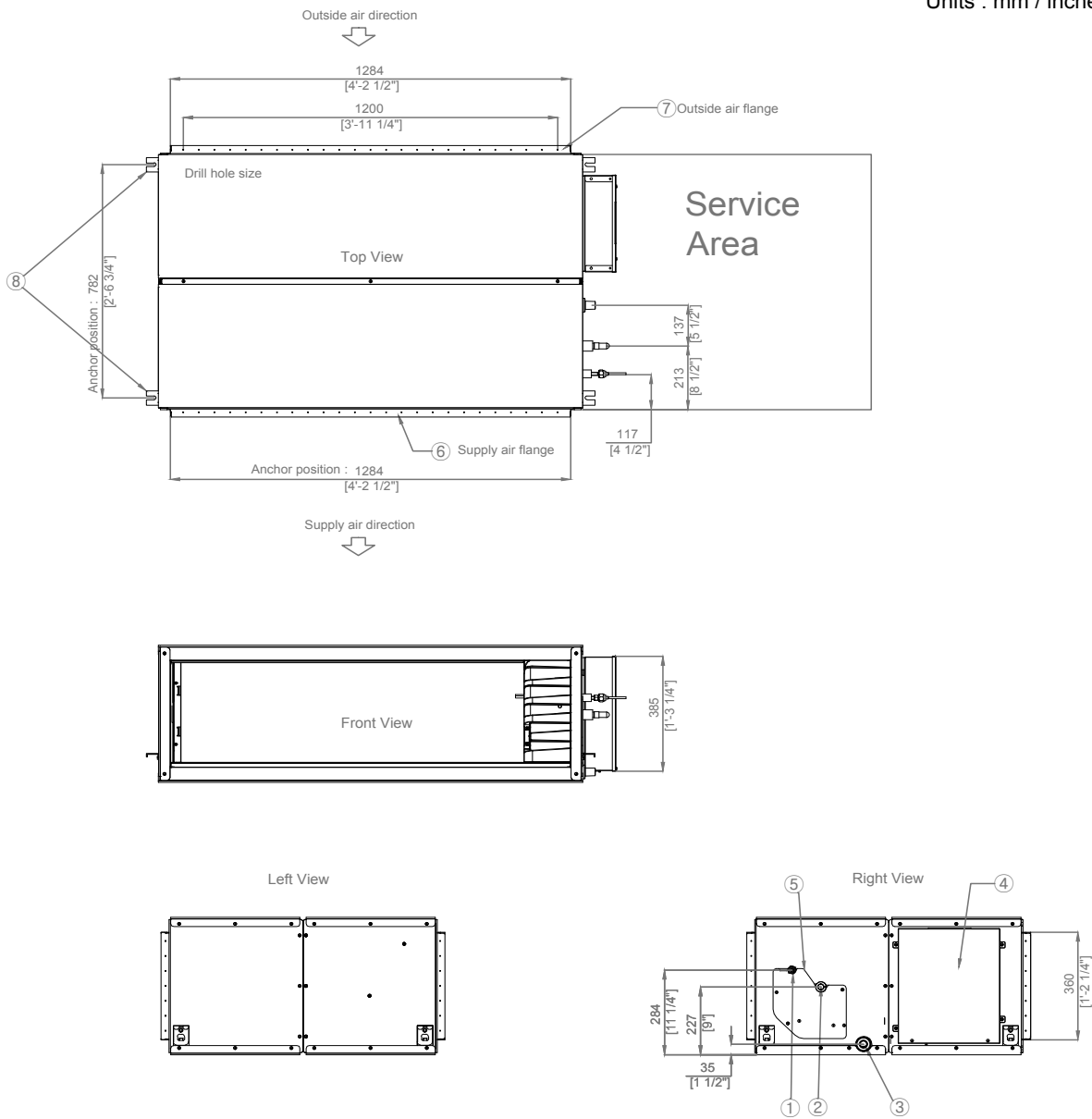


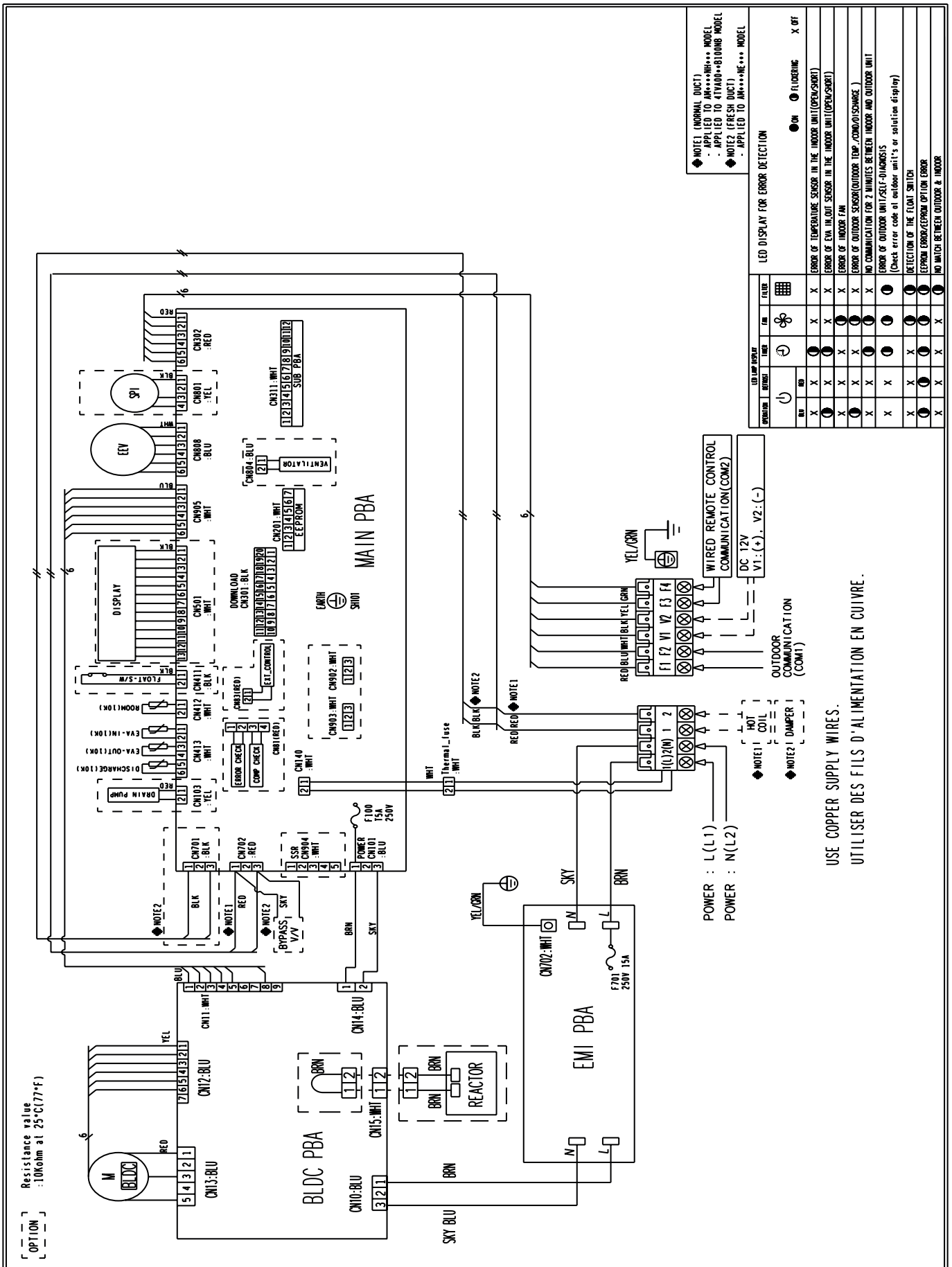
Table of descriptions

1	Refrigerant liquid pipe	7	Outside air flange
2	Refrigerant gas pipe	8	Hook
3	Condensate drain	9	
4	Power & Comm. wiring conduits	10	
5	Refrigerant pipe conduits	11	
6	Supply air flange	12	

3 Electrical wiring diagram

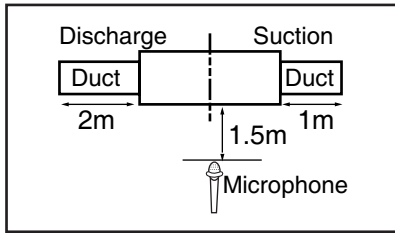
OAP Duct

AM072JNESCH/AA, AM096JNESCH/AA



4 Sound pressure level

OAP Duct



Unit: dB(A)

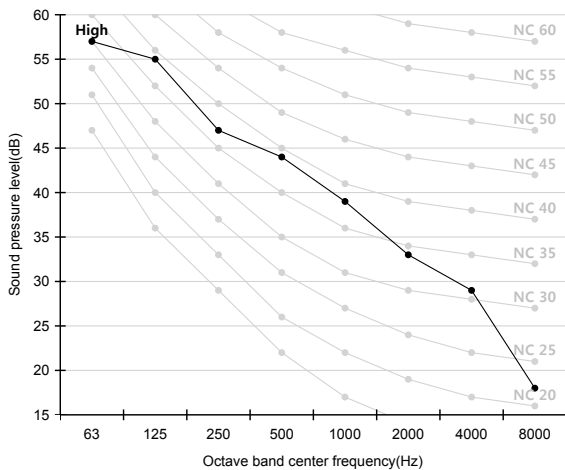
Model	High	Low
AM072JNESCH/AA	47.0	
AM096JNESCH/AA	47.0	

Note

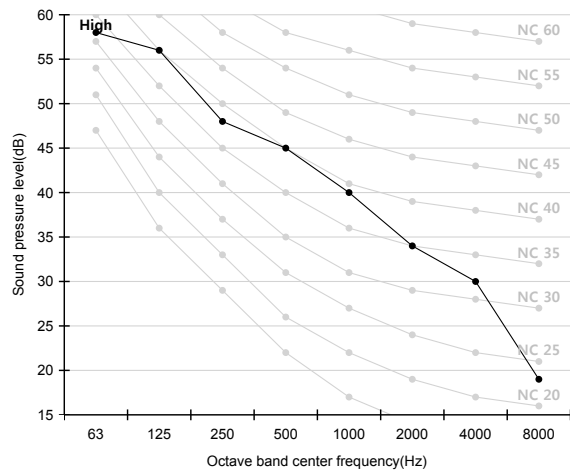
- > Measuring place: Anechoic chamber (conversion value)
- > These operation values were obtained in an anechoic room. Sound pressure level will vary depending on a construction of the particular room where the equipment is installed.
- > Operation sound level may differ depending on operation and ambient conditions.)

NC curve

1) AM072JNESCH/AA



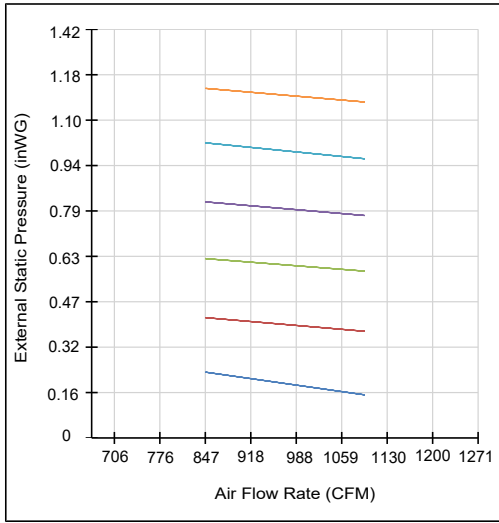
2) AM096JNESCH/AA



5 Recommended operation range

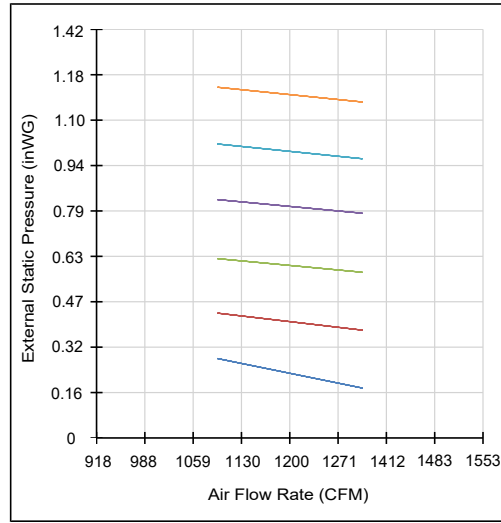
OAP Duct

1) AM072JNESCH/AA



External Static Pressure (inWG)	Option Code
1.21 ~ 1.14	01B064-19348E-231515-333000
1 ~ 0.97 (Std)	01B064-19343E-231515-333000
0.82 ~ 0.77	01B064-1930EC-231515-333000
0.62 ~ 0.58	01B064-193097-231515-333000
0.42 ~ 0.37	01B064-193051-231515-333000
0.23 ~ 0.15	01B064-193020-231515-333000

2) AM096JNESCH/AA



External Static Pressure (inWG)	Option Code
1.21 ~ 1.16	01B064-1934AE-231C1C-333000
1.02 ~ 0.97 (Std)	01B064-19345E-231C1C-333000
0.82 ~ 0.78	01B064-19340E-231C1C-333000
0.62 ~ 0.57	01B064-1930A8-231C1C-333000
0.43 ~ 0.37	01B064-193061-231C1C-333000
0.27 ~ 0.17	01B064-193030-231C1C-333000

Note

- Adjust option code according to the actual installation condition (external static pressure).

SAMSUNG

2017.03
Ver 1.3

Samsung Electronics Co., LTD.
B2B PM / SE

Head Office (Suwon Korea) 129, Samsung-Ro, Yeongtong-Gu, Suwon City, Gyeonggi-Do, Korea 443-742

Website : www.samsung.com Email : airconditioner@samsung.com

Images and data in this book may subject to change without prior notice.

SAMSUNG