

SAMSUNG

Hylex™

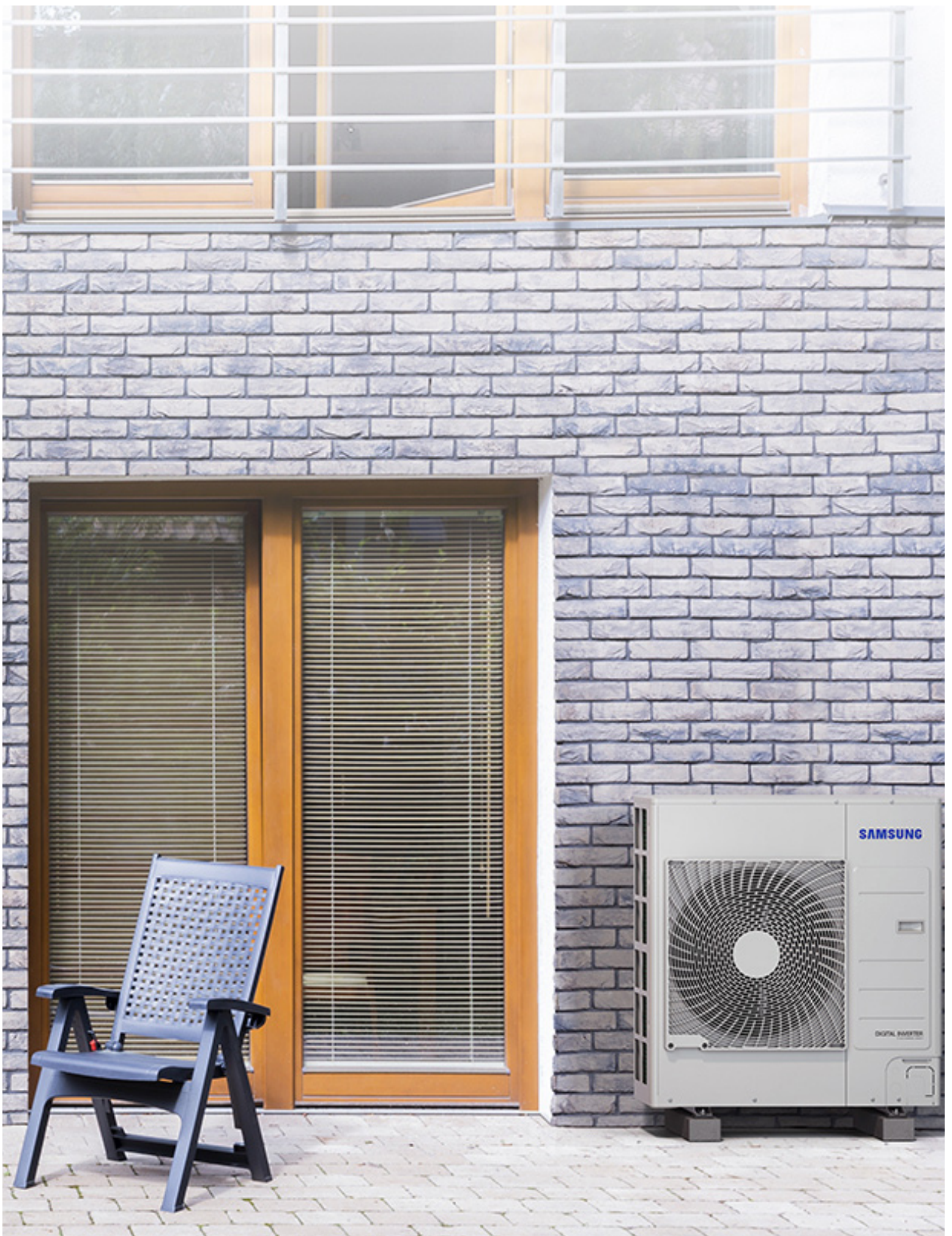
An HVAC game changer.

The Hylex™ unit is a universal, inverter-driven heat pump that serves as a direct replacement for a traditional cooling-only or heat pump unitary outdoor unit. In other words, the game is about to change for residential HVAC.

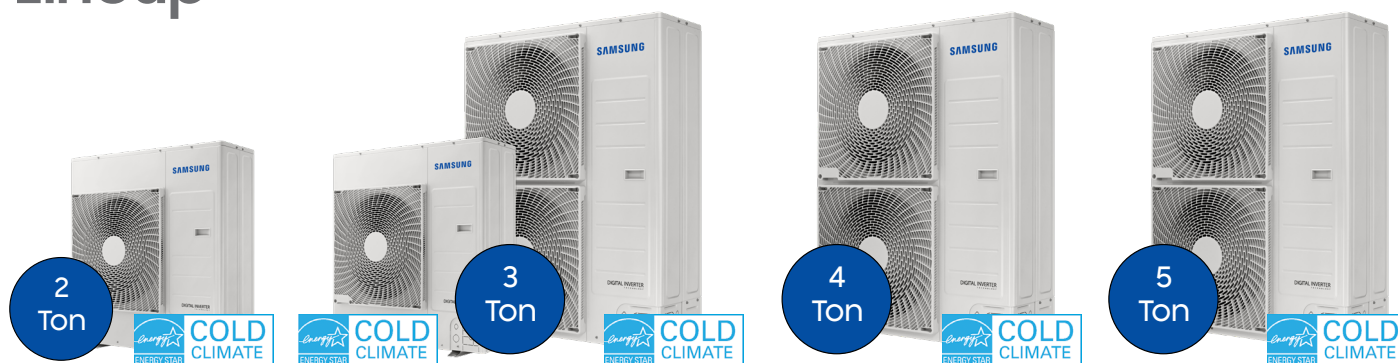


Product Registration Required
Conditions Apply





Lineup



- Capacities from 2-5 tons; single and double fan options for 3 ton unit
 - Single fan option when compact installations are needed, two-fan option for maximum efficiency
- SEER2 up to 18.5
- HSPF2 up to 9.0
- Connects to any coil with TXV (conditions apply)
- Can be used with a furnace or A-coil for dual fuel applications¹
- Configure as heat pump or cooling-only
- Compatible with virtually any 24VAC thermostat
- Features full variable speed compressor with wide modulation
- Base pan heater as standard
- Operating range:
 - Cooling: -4°F (-20°C) ~ 125°F (51.7°C)
 - Heating: Down to -13°F (-25°C)
 - 100% rated heating capacity at 5°F (-15°C) outside temperature²

Overview

The Hylex™ from Samsung is compatible with virtually any existing HVAC system out there. Even better, there's practically no additional equipment needed - no new wires, lines sets or piping when replacing a traditional cooling-only or heat pump unitary outdoor unit. This also makes for much faster and easier installation.

Samsung's innovative design also provides three fan speed control of the indoor unit which increases efficiency, optimizes dehumidification, and reduces sound.

With electrification initiatives driving the consumer decision making process, Hylex™ units were designed for mild to the harshest climates where heat pumps are being installed in place of fossil fuel systems. To promote optimal water drainage during defrost cycles, each unit is equipped with a base pan heater as standard. To ensure the system is configured properly, Samsung has created a web-based tool that asks the installer general system questions and provides a summarized settings report. No special programming tools or computers are required to configure the system.



samsunghvac.com/unitary-settings

¹Requires a thermostat that supports this capability

²Refer to capacity tables in outdoor unit technical data book for full capacity details

Connect to Air Handling Units and Coils with TXV Refrigerant Control

Hylex™ units are universal, inverter driven heat pumps that can connect to any coil with a TXV (conditions apply) that can be applied to full (new system) or partial (replacement) applications.



Reuse Existing Controls Wiring

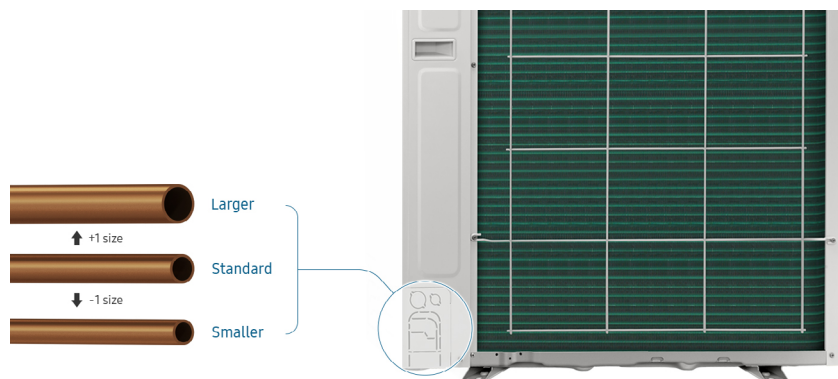
Whether the system is configured as a cooling-only or heat pump, only 2 wires are required between indoor and outdoor sections. In addition, the Hylex™ unit is compatible with virtually an 24VAC thermostat and can use standard solid-core 18 AWG control wire from the outdoor unit to the indoor section and to the thermostat.



Reuse Existing Refrigerant Piping

The Hylex™ unit uses traditional unitary line sets where the liquid pipe does not require insulation and provides three suction pipe diameter options for even greater installation flexibility for replacement applications.

Unit	Suction Pipe				Pipe Limitations (ft.)	
	5/8	3/4	7/8	1 1/8	Length	Vertical Separation
2 ton	✓	✓ (Standard)	✓		98	49
3 ton (standard)	✓	✓ (Standard)	✓		164	98
3 ton (high efficiency)		✓	✓ (Standard)	✓	164	98
4 ton		✓	✓ (Standard)	✓	164	98
5 ton		✓	✓ (Standard)	✓	98	65



Reduced Sound






Variable speed fan motors, specially engineered fan blades, and acoustically designed compressors reduce sound levels as low as 50 dB(A), compared to 68 dB(A) or more for traditional unitary equipment. This makes the Hylex™ unit ideal for zero-lot-line, sound sensitive applications.

Compact Size

The Hylex™ unit has a smaller footprint compared to a traditional unitary (cube) unit, making it easier to move using a dolly, easier to get through gates and requires less space on the installers truck. In addition, its compact size makes it an ideal solution for new residential zero-lot-line properties.



Hylex™

MODEL	US CODE		CXH24UPB	CXH36UDB	CXH36UPB	CXH48UPB	CXH60UPB	
	MODEL NUMBER		AC024BXUPCH/AA	AC036BXUDCH/AA	AC036BXUPCH/AA	AC048BXUPCH/AA	AC060BXUPCH/AA	
PERFORMANCE ¹	CAPACITY	COOLING	24,000 Btu/h	36,000 Btu/h	36,000 Btu/h	48,000 Btu/h	57,000 Btu/h	
		HEATING	26,000 Btu/h	34,600 Btu/h	34,600 Btu/h	44,000 Btu/h	53,000 Btu/h	
	CAPACITY RANGE	COOLING	11,000 - 30,000 Btu/h	16,500 - 40,000 Btu/h	16,500 - 45,000 Btu/h	17,500 - 55,000 Btu/h	17,700 - 59,000 Btu/h	
		HEATING	7,500 - 35,000 Btu/h	10,500 - 37,000 Btu/h	13,000 - 50,000 Btu/h	13,800 - 62,000 Btu/h	14,000 - 65,000 Btu/h	
	SEER2		16.5	17.0	18.5	17.0	17.5	
	EER2		10.1	9.0	10.5	8.6	8.5	
HSPF2 (REGION IV)		8.10	8.10	8.40	8.50	9.00		
COP2		3.12	3.18	3.02	2.58	2.64		
POWER	VOLTAGE	ø / V / Hz	1/208-230 / 60	1/208-230 / 60	1/208-230 / 60	1/208-230 / 60	1/208-230 / 60	
	MAX. BREAKER		30 A	35 A	35 A	40 A	40 A	
	MIN. CIRCUIT AMPACITY		24.1 A	24.4 A	25.6 A	32.7 A	33.2 A	
UNIT DIMENSIONS	W X H X D		37X39 5/16 X13 in.	37X39 5/16 X13 in.	37x47 5/8 x13 in.	37x47 5/8 x13 in.	37x55 7/8 x13 in.	
	WEIGHT		163 lbs.	172 lbs.	196 lbs.	196 lbs.	223 lbs.	
SOUND LEVEL	OUTDOOR	COOLING / HEATING (HIGH)	50 / 52 dB(A)	53 / 53 dB(A)	52 / 54 dB(A)	55 / 57 dB(A)	56 / 58 dB(A)	
OPERATING TEMPERATURE	OUTDOOR	COOLING*	-4 - 125°F -20 - 52°C	-4 - 125°F -20 - 52°C	-4 - 125°F -20 - 52°C	-4 - 125°F -20 - 52°C	-4 - 125°F -20 - 52°C	
		HEATING	-13 - 75°F -25 - 24°C	-13 - 75°F -25 - 24°C	-13 - 75°F -25 - 24°C	-13 - 75°F -25 - 24°C	-13 - 75°F -25 - 24°C	
PIPE CONNECTIONS	LIQUID (BRAZE)		3/8 in.	3/8 in.	3/8 in.	3/8 in.	3/8 in.	
		SUCTION (BRAZE)	MINIMUM	5/8 in.	5/8 in.	3/4 in.	3/4 in.	3/4 in.
			STANDARD	3/4 in.	3/4 in.	7/8 in.	7/8 in.	7/8 in.
		MAXIMUM	7/8 in.	7/8 in.	1 1/8 in.	1 1/8 in.	1 1/8 in.	
	MAX. LINE SET LENGTH		98 ft	164 ft	164 ft	164 ft	98 ft	
MAX. VERTICAL SEPARATION		49 ft	98 ft	98 ft	98 ft	49 ft		
REFRIGERANT	TYPE		R410A	R410A	R410A	R410A	R410A	
	FACTORY CHARGE		7.06 lbs.	7.93 lbs.	9.26 lbs.	9.26 lbs.	10.58 lbs.	
	CHARGED FOR		24.6 ft.	24.6 ft.	24.6 ft.	24.6 ft.	24.6 ft.	
COMPRESSOR	TYPE		Inverter Driven, Twin BLDC Rotary	Inverter Driven, Twin BLDC Rotary	Inverter Driven, Twin BLDC Rotary	Inverter Driven, Twin BLDC Rotary	Inverter Driven, Twin BLDC Rotary	
CONDENSER FAN	MOTOR		BLDC With Axial Type Fan (1)	BLDC With Axial Type Fan (1)	BLDC With Axial Type Fan (2)	BLDC With Axial Type Fan (2)	BLDC With Axial Type Fan (2)	
	CFM (MAX.)		2,684	2,684	3,531	3,531	4,414	
ACCESSORIES	ACU (AHU CONTROL KIT) - MANDATORY		MXD-U000XN	MXD-U000XN	MXD-U000XN	MXD-U000XN	MXD-U000XN	
	3 SPEED INDOOR FAN RELAY KIT (FOR USE WITH PSC MOTORS)		URK-3A	URK-3A	URK-3A	URK-3A	URK-3A	
	WIND BAFFLE	FRONT	WBF-2M-B	WBF-2M-B	WBF-1M2	WBF-1M2	WBF-6M	
		BACK	WBB-3M	WBB-3M	WBB-2M-B	WBB-2M-B	WBB-4M	
	HAIL GUARD		HGK-3	HGK-3	HGK-4	HGK-4	HGK-5	
	EXTERNAL CONTACT CONTROL (FOR MANUAL NIGHT QUIET MODE)		MIM-B14	MIM-B14	MIM-B14	MIM-B14	MIM-B14	
WALL BRACKET (FOR OUTDOOR UNIT)		CKN-250	CKN-250	CKN-250	CKN-250	CKN-250		
CERTIFICATIONS	ENERGY STAR® V6.1 COLD CLIMATE CERTIFIED ²							



Product Registration Required.
Conditions Apply.

The Hylex™ heat pump requires an ACU (AHU Control Unit; MXD-U000XN) that installs in between the heat pump outdoor unit, thermostat, and AHU/furnace. In addition to facilitating communication between the Hylex™ outdoor unit and the indoor unit, the ACU provides the installer the option to allow the Hylex™ to fully control the indoor unit fan for improved performance. MXD-U000XN is mandatory and must be purchased separately.



The AHRI Certified® mark indicates Samsung's participation in the AHRI Certification program. For verification of individual certified products, go to www.ahridirectory.org.
¹Performance data certified by AHRI to AHRI 210-240 (2023). Effective January 1st, 2023.

²Based on connection to specific air handling unit models. Connection to different air handling units or A-coils will result in different capacity and efficiency ratings. Refer to AHRIdirectory.org for a complete list of AHRI listed system combinations.

*With Wind Baffles



Intertek

Samsung HVAC maintains a policy of ongoing development, specifications are subject to change without notice. Select models are Energy Star® labeled. Proper sizing and installation of equipment is critical to achieve performance. Split system air conditioners and heat pumps (excluding ductless systems) must be matched with appropriate coil components to meet Energy Star® criteria. Ask your contractor for details or visit www.energystar.gov.

SAMSUNG

SamsungHVAC.com
HYLEXBR 02.2023-V1

Select models are ENERGY STAR® labeled. Proper sizing and installation of equipment is critical to achieve performance. Split system air conditioners and heat pumps (excluding ductless systems) must be matched with appropriate coil components to meet ENERGY STAR® criteria.

Ask your contractor for details or visit www.energystar.gov

© 2023 Samsung HVAC