

HVRF PLFY-WL-VEM-E

4-Way Blow Ceiling Cassette Indoor Unit

CITY MULTI

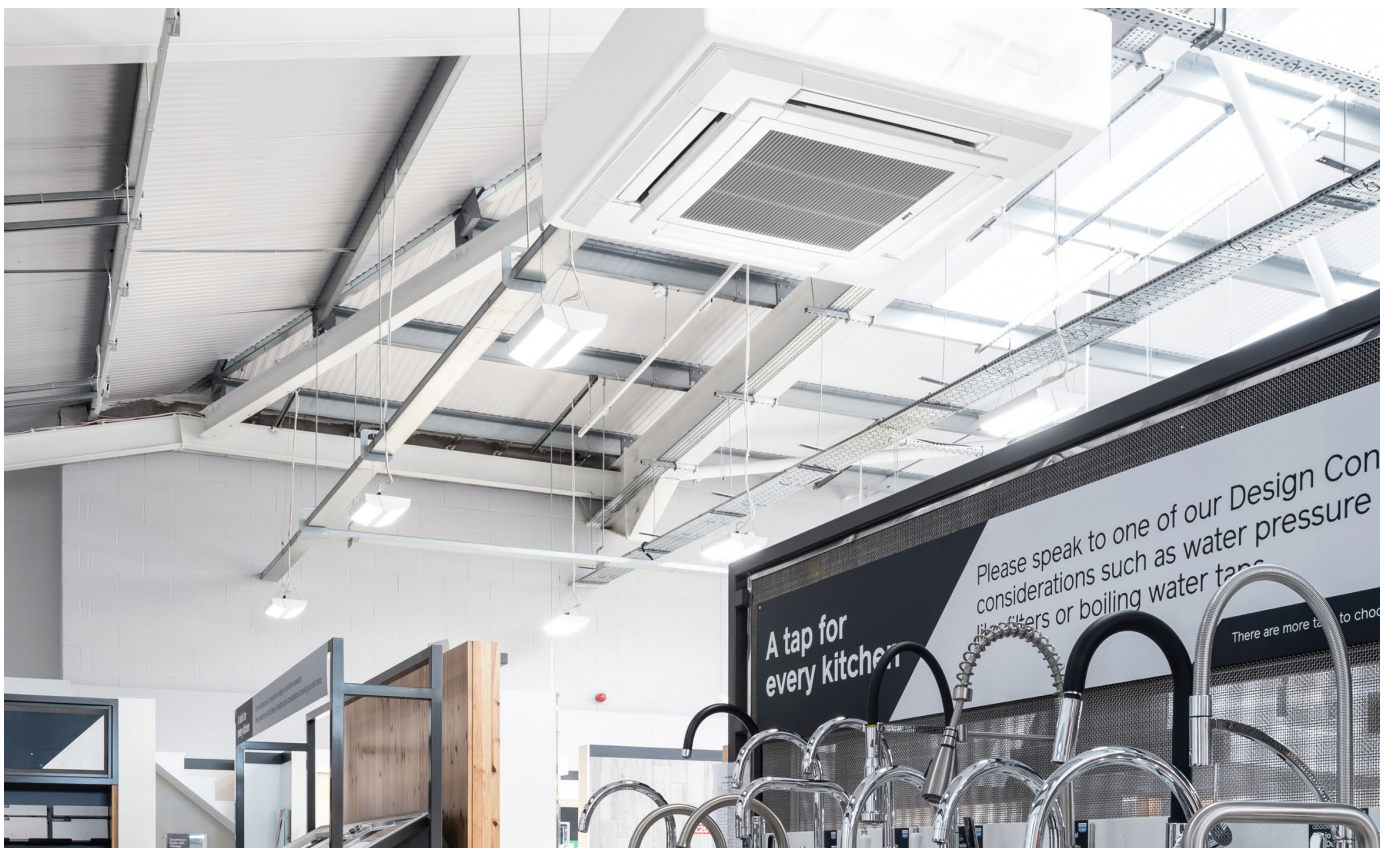
The **PLFY-WL-VEM-E** connects to the Hybrid Branch Controller and uses water as the heat transfer medium. The ceiling cassette offers 72 different airflow patterns and the ability to handle a multitude of ceiling applications up to 4.2m in height.

Easy to install, the slimline unit is ideal for maintaining constant temperatures, thanks to adjustable vanes that allow users to precisely direct air where it's needed.



Key Features & Benefits:

- No refrigerant in occupied spaces, removing the need for leak detection under BS EN378
- Enhanced airflow control through directional vanes
- Higher air off temperatures allowing for improved comfort levels
- Optional 3D i-see sensor grille (PLP-6EAE) provides customised comfort by automatically monitoring room occupancy, position and body temperatures
- Optional filter lowering operation down to 4m (PLP-6EAJ), allowing for easier maintenance
- Optional black satin grille (PLP-6EA-B), ideal for applications with exposed ceilings or stylish aesthetics
- Optional V Blocking filter (PAC-SK53KF-E) provides in-room air purification, neutralises viruses, bacteria, allergens, dust and mould
- Compatible with Plasma Quad Connect - an innovative, bolt-on air purifying device which neutralises viruses, bacteria, allergens, PM2.5, mould and dust (PAC-SK51FT-E)





PLP-6EA

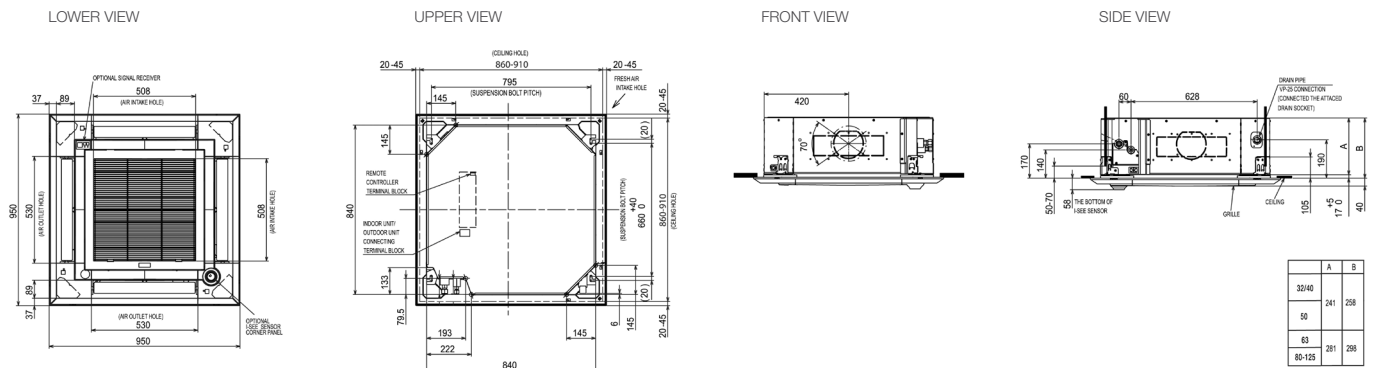


PLP-6EA-B

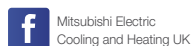
INDOOR UNITS		PLFY-WL32VEM-E	PLFY-WL40VEM-E	PLFY-WL50VEM-E	PLFY-WL63VEM-E	PLFY-WL80VEM-E
CAPACITY (kW)	Heating (nominal)	4.0	5.0	6.3	8.0	10.0
	Cooling (nominal)	3.6	4.5	5.6	7.1	9.0
	UK Heating	4.0	5.0	6.3	8.0	8.0
	UK Total Cooling - Hi (Sensible)	3.20 (3.20)	4.00 (3.60)	5.00 (4.20)	6.4 (5.0)	8.1 (6.1)
	UK Total Cooling - Mi2	3.16	3.95	4.87	6.26	7.94
POWER INPUT (kW)	Heating (nominal)	0.03	0.03	0.04	0.04	0.05
	Cooling (nominal)	0.03	0.03	0.04	0.05	0.05
	AIRFLOW (l/s)	233-250-267-283	233-250-267-283	233-250-300-333	250-283-317-350	250-300-350-383
	SOUND PRESSURE LEVEL (dBA)	26-27-29-30	26-28-29-31	27-29-31-33	27-29-31-33	27-30-33-35
	WEIGHT (kg)	20	20	20	23	23
DIMENSIONS (mm)	Width (Grille)	840 (950)	840 (950)	840 (950)	840 (950)	840 (950)
	Depth (Grille)	840 (950)	840 (950)	840 (950)	840 (950)	840 (950)
	Height (Grille)	258 (40)	258 (40)	258 (40)	298 (40)	298 (40)
ELECTRICAL SUPPLY		220-240v, 50Hz	220-240v, 50Hz	220-240v, 50Hz	220-240v, 50/60Hz	220-240v, 50/60Hz
PHASE		Single	Single	Single	Single	Single
RUNNING CURRENT (A)	Heating / Cooling	0.27 / 0.33	0.29 / 0.35	0.34 / 0.40	0.34 / 0.40	0.40 / 0.46
FUSE RATING (BS88) - HRC (A)		6	6	6	6	6
MAINS CABLE No. Cores		3	3	3	3	3
WATER PIPE CONNECTION		20mm I.D	20mm I.D	20mm I.D	22 mm (O.D)	22 mm (O.D)
GRILLE MODEL REFERENCE	White	PLP-6EA	PLP-6EA	PLP-6EA	PLP-6EA	PLP-6EA
	Black Satin	PLP-6EA-B	PLP-6EA-B	PLP-6EA-B	PLP-6EA-B	PLP-6EA-B
3D I-SEE SENSOR		PLP-6EAE	PLP-6EAE	PLP-6EAE	PLP-6EAE	PLP-6EAE
SELF-ELEVATING GRILLE		PLP-6EAEJ	PLP-6EAEJ	PLP-6EAEJ	PLP-6EAEJ	PLP-6EAEJ

Notes: HVRF indoor units can only be configured with the CMB-WM HBC (HVRF) and PURY-(E)M YNW-A1 or PQRY-P YLM-A1 outdoor units.

PLFY-WL32/40/50/63/80VEM-E DIMENSIONS



Telephone: 01707 282880
email: air.conditioning@meuk.mee.com
les.mitsubishielectric.co.uk



UNITED KINGDOM Mitsubishi Electric Europe Living Environment Systems Division, Travellers Lane, Hatfield, Hertfordshire, AL10 8XB, England. Telephone: 01707 282880 Fax: 01707 278881
IRELAND Mitsubishi Electric Europe, Westgate Business Park, Ballymount, Dublin 24, Ireland. Telephone: (01) 419 8800 Fax: (01) 419 8890 International code: (003531)

Country of origin: United Kingdom - Italy - Turkey - Japan - Thailand - Malaysia. ©Mitsubishi Electric Europe 2023. Mitsubishi and Mitsubishi Electric are trademarks of Mitsubishi Electric Europe B.V. The company reserves the right to make any variation in technical specification to the equipment described, or to withdraw or replace products without prior notification or public announcement. Mitsubishi Electric is constantly developing and improving its products. All descriptions, illustrations, drawings and specifications in this publication present only general particulars and shall not form part of any contract. All goods are supplied subject to the Company's General Conditions of Sale, a copy of which is available on request. Third-party product and brand names may be trademarks or registered trademarks of their respective owners.

Note: Refer to 'Installation Manual' and 'Instruction Book' for further 'Technical Information'. The fuse rating is for guidance only and please refer to the relevant databook for detailed specification. It is the responsibility of a qualified electrician/electrical engineer to select the correct cable size and fuse rating based on current regulation and site specific conditions. Mitsubishi Electric's air conditioning equipment and heat pump systems contain a fluorinated greenhouse gas, R410A (GWP:2088), R32 (GWP:675), R407C (GWP:1774), R134a (GWP:1430), R513A (GWP:631), R454B (GWP:466), R1234ze (GWP:7) or R1234yf (GWP:4). *These GWP values are based on Regulation (EU) No 517/2014 from IPCC 4th edition. In case of Regulation (EU) No.626/2011 from IPCC 3rd edition, these are as follows: R410A (GWP:1975), R32 (GWP:550), R407C (GWP:1650) or R134a (GWP:1300).

Effective as of March 2023

