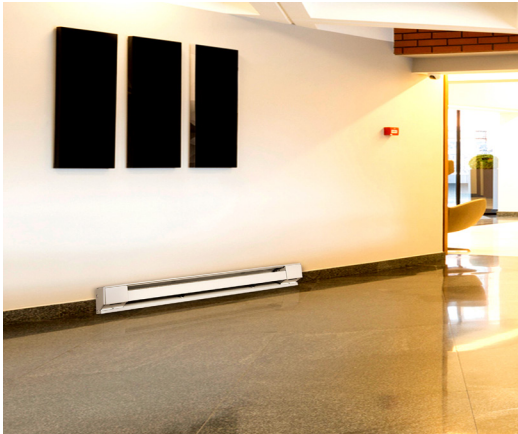


BKOC SERIES

COMMERCIAL BASEBOARD HEATER



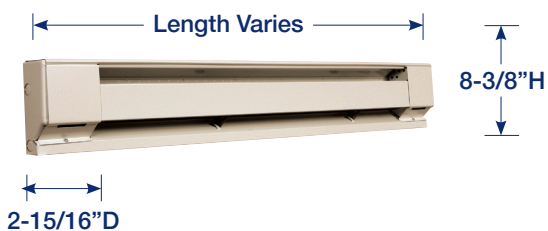
IDEAL SPACES

- Bedrooms
- Living/Family Rooms
- Kitchens
- Bathrooms
- Basements
- Offices
- Conference Rooms
- Hallways
- Lobbies
- Waiting Rooms

COLORS

- Navajo White

DIMENSIONS



- Ideal for basic, zoned primary/secondary heating
- No fans; convection heat minimizes air flow, reducing flow of bacteria and dust
- Commercial-grade 18-gauge cold rolled front cover and brackets allow heater to withstand rigors of commercial applications
- Steel-sheathed heating element combines the durability of a steel tubular heater with the excellent heat transfer characteristics of aluminum fins
- Built-in wire-way facilitates end-to-end installation of continuous-run heaters
- Large, pre-wired junction boxes at each end are provided with knockouts in the rear, bottom, inside and outside
- High temperature safety limit for added protection in case of airflow blockage
- Pre-notched marks for mounting guide
- UL-listed for installation flush to any wall and flat on any floor type
- Chimney-fin element designed for maximum air circulation
- Air flow directed away from walls to help prevent wall streaking



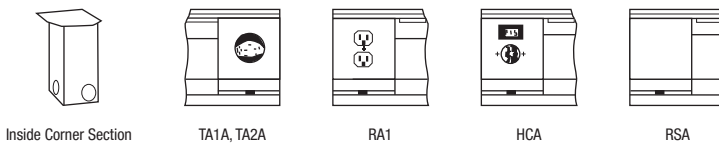
BKOC SERIES COMMERCIAL BASEBOARD HEATER

MODELS & SPECIFICATIONS						
CATALOG NO.	UPC	VOLTS	WATTS	AMPS	LENGTH (IN)	SHIP WT. (LBS)
BKOC25126W	6 85360 01009 0	120	500	4.2	30"	7.8
BKOC25026W	6 85360 00985 8	208	500	2.4		
BKOC25426W	6 85360 01036 6	240/208	500/376	2.1/1.8		
BKOC25726W	6 85360 01067 0	277/240/208	500/376/282	1.8/1.6/1.4		
BKOC2513W	6 85360 01013 7	120	750	6.5	36"	9.0
BKOC2503W	6 85360 00989 6	208	750	3.6		
BKOC2543W	6 85360 01040 3	240/208	750/564	3.1/2.7		
BKOC2573W	6 85360 01071 7	277/240/208	750/564/423	2.7/2.4/2.0		
BKOC2514W	6 85360 01017 5	120	1000	8.3	48"	11.5
BKOC2504W	6 85360 00993 3	208	1000	4.8		
BKOC2544W	6 85360 01044 1	240/208	1000/752	4.2/3.6		
BKOC2574W	6 85360 01075 5	277/240/208	1000/752/564	3.6/3.1/2.7		
BKOC2515W	6 85360 01021 2	120	1250	10.4	60"	13.0
BKOC2505W	6 85360 00997 1	208	1250	6.0		
BKOC2545W	6 85360 01048 9	240/208	1250/940	5.2/4.5		
BKOC2575W	6 85360 01079 3	277/240/208	1250/940/705	4.5/3.9/3.4		
BKOC2516W	6 85360 01025 0	120	1500	12.6	72"	15.5
BKOC2506W	6 85360 01001 4	208	1500	7.2		
BKOC2546W	6 85360 01052 6	240/208	1500/1128	6.3/5.4		
BKOC2576W	6 85360 01083 0	277/240/208	1500/1128/846	5.4/4.7/4.1		
BKOC2508W	6 85360 01005 2	208	2000	9.6	96"	20
BKOC2548W	6 85360 01056 4	240/208	2000/1504	8.3/7.2		
BKOC2578W	6 85360 01087 8	277/240/208	2000/1504/1128	7.2/6.3/5.4		
BKOC25008W	6 85360 00981 0	208	2500	12.0		
BKOC25408W	6 85360 01032 8	240/208	2500/1880	10.4/8.7	96"	20
BKOC25708W	6 85360 01063 2	277/240/208	2500/1880/1410	9.0/7.5/6.8		

CONTROLS & ACCESSORIES			
CATALOG NO.	UPC	DESCRIPTION	SHIP WT. (LBS)
TA1AW	0 98319 73041 1	SP Thermostat, rated 22A @ 120-277V	1
TA1TPAW	0 98319 73042 8	Tamper-Resistant Version of TA1AW	1
TA2AW	0 98319 73043 5	DP Thermostat, rated 22A @ 120-277V	1
TA2TPAW	0 98319 73044 2	Tamper-Resistant Version of TA2AW	1
HCA2415/20W	0 98319 73046 6	240V Load Transfer Switch, 20A	1
HCA1215/20W	0 98319 73045 9	120V Load Transfer Switch, 20A	1
RSA1224	0 98319 71480 0	120V/24V Transformer Relay, 22A	1
RSA2024	0 98319 71485 5	208V/24V Transformer Relay, 22A	1
RSA2424	0 98319 71490 9	240V/24V Transformer Relay, 22A	1
RSA2724	0 98319 71495 4	277V/24V Transformer Relay, 19A	1
RA1W	0 98319 73047 3	120V Duplex Receptacle	1
DSW2W	0 98319 73049 7	Double-Pole Power On/Off Switch rated 20A @ 120-277V	1
PR24	0 98319 71367 4	Single-Pole Power Relay, 24VControl rated 30A @ 120-240V, 23A @ 277V	1
PR120	0 98319 71368 1	Same as PR24 except with 120V Control	1
RA1COMPW	0 98319 73048 0	Duplex Receptacle Cover only—carton of 10	1

FILLER AND BLACK SECTIONS			
CATALOG NO.	UPC	DESCRIPTION	SHIP WT. (LBS)
ICAW	0 98319 73050 3	Inside Corner	1
FS12	0 98319 73150 0	1 ft. Filler Section	2
FS24	0 98319 73151 7	2 ft. Filler Section	4
FS36	0 98319 73152 4	3 ft. Filler Section	6
FS48	0 98319 73153 1	4 ft. Filler Section	8
FSJ2	73154 8	2 in. Joiner Strip	1/2
BKOCBDA2W	6 85360 00931 5	2.6 ft. Blank Section	4
BKOCBDA3W	6 85360 00933 9	3 ft. Blank Section	5
BKOCBDA4W	6 85360 00935 3	4 ft. Blank Section	7
BKOCBDA5W	6 85360 00937 7	5 ft. Blank Section	9
BKOCBDA6W	6 85360 00939 1	6 ft. Blank Section	11
BKOCBDA8W	6 85360 00941 4	8 ft. Blank Section	14

NOTE: For high-altitude baseboard heater (mounted above 7,500 ft.), add suffix "H" to catalog number. 8 ft. length baseboards must be ordered in multiples of two pieces for shipment.



Inside Corner Section

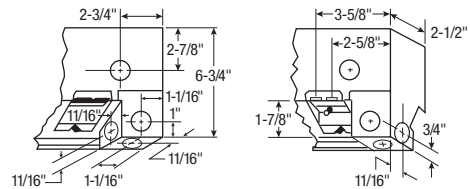
TA1A, TA2A

RA1

HCA

RSA

Unit length varies with model. See Selection Chart



All knockouts are 7/8" diameter for 1/2" conduit