

LENNOX®
MINI-SPLIT SYSTEMS



THE SOLUTION THAT WORKS WHERE OTHERS WON'T.





LENNOX® MINI-SPLIT SYSTEMS OFFER YEAR-ROUND COMFORT AND PERFORMANCE.

Energy-efficient operation and easy installation make Lennox® Mini-Split Systems a perfect fit for any environment.

Not every commercial space is the same. Some areas may be difficult to heat and cool. Others may be impossible to reach with conventional ductwork. And some areas simply aren't designed to accommodate large heating and cooling solutions. For situations like these, Lennox offers a brilliant, innovative solution: Lennox Mini-Split Systems.

LENNOX MINI-SPLIT SYSTEMS AT A GLANCE:

- Up to 24.5 SEER and 11.5 HSPF
- High-efficiency design and inverter technology reduce energy usage
- A wide variety of sizes, indoor unit types and voltage options increase application flexibility
- Single- and multi-zone compatible
- No need for ductwork
- Extreme temperature operating range with ML-Series outdoor unit
- Whisper-quiet levels of indoor operation
- Cold-catalyst filter reduces volatile organic compounds in the air
- Easy installation and maintenance
- Excellent construction, reliability and warranties
- Can help meet LEED requirements for efficiency and indoor air quality
- Complements the full line of Lennox® VRF products

OTHER BENEFITS INCLUDE:

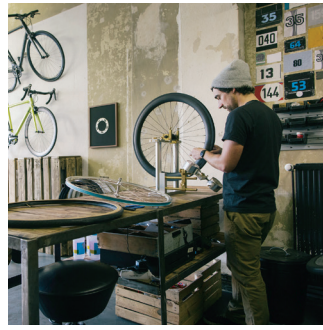
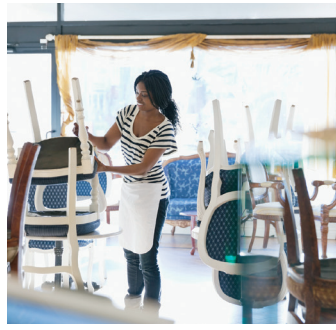
- A more compact version of a traditional split system
- Consists of an outdoor condensing unit, connected to a single (or multiple) powerful, self-contained indoor unit
- Extremely energy smart and quiet

With Lennox Mini-Split Systems, businesses can enjoy heating and cooling in previously uncomfortable areas while using energy wisely all year long. And best of all, Lennox Mini-Splits are the only ductless mini-split systems backed by the expertise and extensive support of Lennox.

PERFECT COMFORT FOR VIRTUALLY ANY APPLICATION.

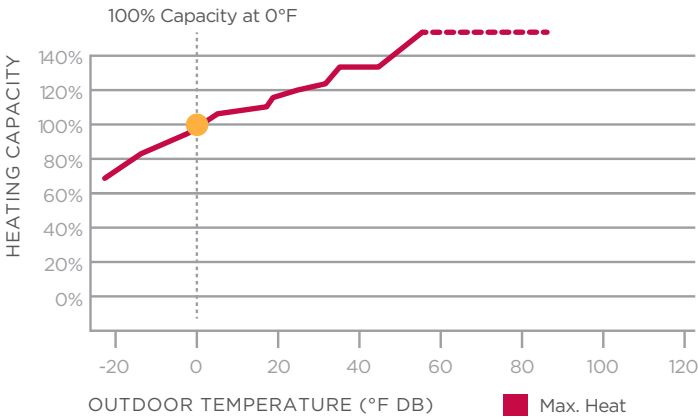
Lennox Mini-Split Systems provide extremely effective cooling and heating for environments of all kinds, including:

- Office spaces
- Hotels
- Server rooms
- Building additions
- Elevator rooms
- Classrooms
- Churches
- Restaurants
- Assisted living
- Residential

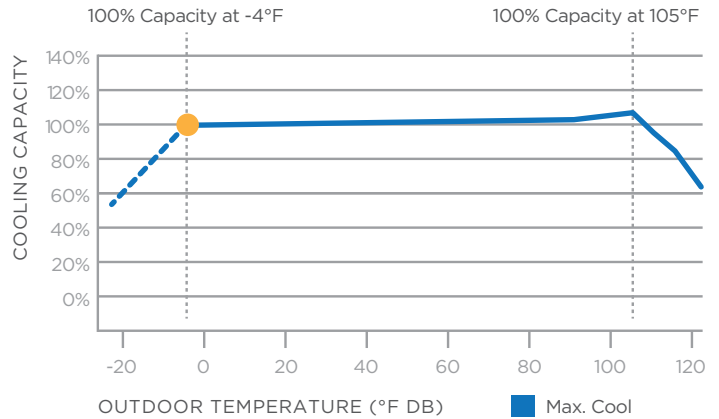


HEAT PUMPS FOR LOW- AND HIGH-AMBIENT CONDITIONS

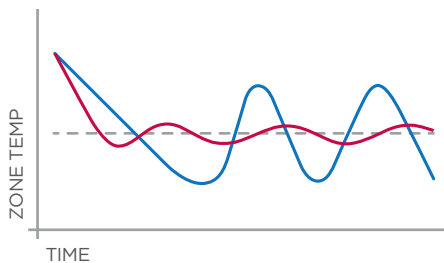
Whether they're operating in heating or cooling mode, Lennox Mini-Split Low Ambient Heat Pump units will provide full capacity, even at temperatures as low as 0°F. Furthermore, an extended operating range of -22°F to 122°F means these units will keep businesses comfortable, even in the most extreme outdoor temperatures.



Note: MLA018S4S-1P max heat performance indicated; Data illustrated to 57°F but unit effectively operates to 86°F (indicated by dotted line); 70°F entering indoor unit.



Note: MLA018S4S-1P max cool performance indicated; Data illustrated to -4°F but unit effectively operates to -22°F (indicated by dotted line); 80°F db / 67°F wb entering indoor unit.



INCREASED COMFORT THROUGH VARIABLE SPEED

Lennox Mini-Split Systems use industry-leading inverter technology. By adjusting compressor output up and down like a dimmer switch, set temperatures can be reached more quickly and maintained more accurately than traditional systems for better temperature control and energy savings.

CONNECTING TECHNOLOGY WITH EXPERTISE.

When you select Lennox® Mini-Split Systems, you're making a very smart choice.

Because you're not only getting the benefits of ductless technology, you're also getting the benefits of the entire company behind it.

HISTORY

Lennox Mini-Split Systems are supported by more than a century of heating and cooling experience. Lennox knows indoor comfort, inside and out.

QUALITY

Lennox Mini-Split Systems have been extensively tested and proven to make sure they meet the exacting standards Lennox sets for reliability.

EXPERTISE

When you select Lennox Mini-Split Systems, you're choosing technology backed by expertise. Lennox HVAC professionals understand the challenges faced by engineers and contractors in designing and specifying a heating and cooling system, which is why you'll find so many resources available.



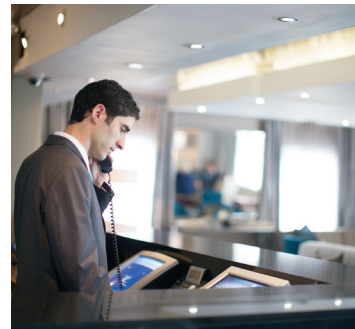
The Lennox® VRF & Mini-Splits Mobile Application

Full of helpful tools for contractors, including a refrigerant charge calculator, error code database, technical publications and more. Available on iTunes and Google Play.

The Lennox Mini-Split Warranty

Lennox Mini-Split Systems come with the peace-of-mind protection of a 12-year extended warranty option on the compressor, covered parts, and components.*

*Covered components, including the compressor, may be eligible to receive a 12-year limited warranty. Online equipment registration at www.lennoxregistration.com is required within 60 days of installation (except in California and Quebec) or Lennox' base warranty will apply. Applies to both residential and commercial applications. See actual warranty certificate for details.



DESIGNED FOR COMFORT IN COMMERCIAL SPACES.

Lennox Mini-Split Systems include smart features that ensure reliable operation and exact temperature control.



LEADING THE INDUSTRY

The inverter technology built into each streamlined cabinet performs effectively in the most extreme outdoor temperatures, with low-ambient ML-series models maintaining 100% capacity at 0°F and effectively performing at temperatures as low as -22°F—the lowest negative operating temperature in the industry—in both heating and cooling modes.



TECHNOLOGIES THAT GET THE JOB DONE

Lennox Mini-Split Systems are engineered to be ultra quiet, with indoor sound levels as low as 24 dBA.



REBATE ELIGIBILITY AND GOVERNMENT COMPLIANCE

Because many Lennox Mini-Split Systems are ENERGY STAR® certified, they may make businesses eligible for local energy rebates and incentives.



FEATURES THAT SAVE ENERGY AND COST

Lennox Mini-Split Systems provide extreme efficiency through highly precise inverter operation. ENERGY STAR-certified systems have efficiencies of up to 24.5 SEER and 11.5 HSPF.



INSTALLATION AND SERVICE MADE SIMPLE

Lennox Mini-Split Systems are designed for easy and quick maintenance, and common parts across outdoor models also simplify replacement. The upside-down design of the electrical boxes prevents dust and water accumulation by up to 70%. Accessories such as stands, hail guards and wall brackets are available, and all units are factory assembled and internally piped and wired.



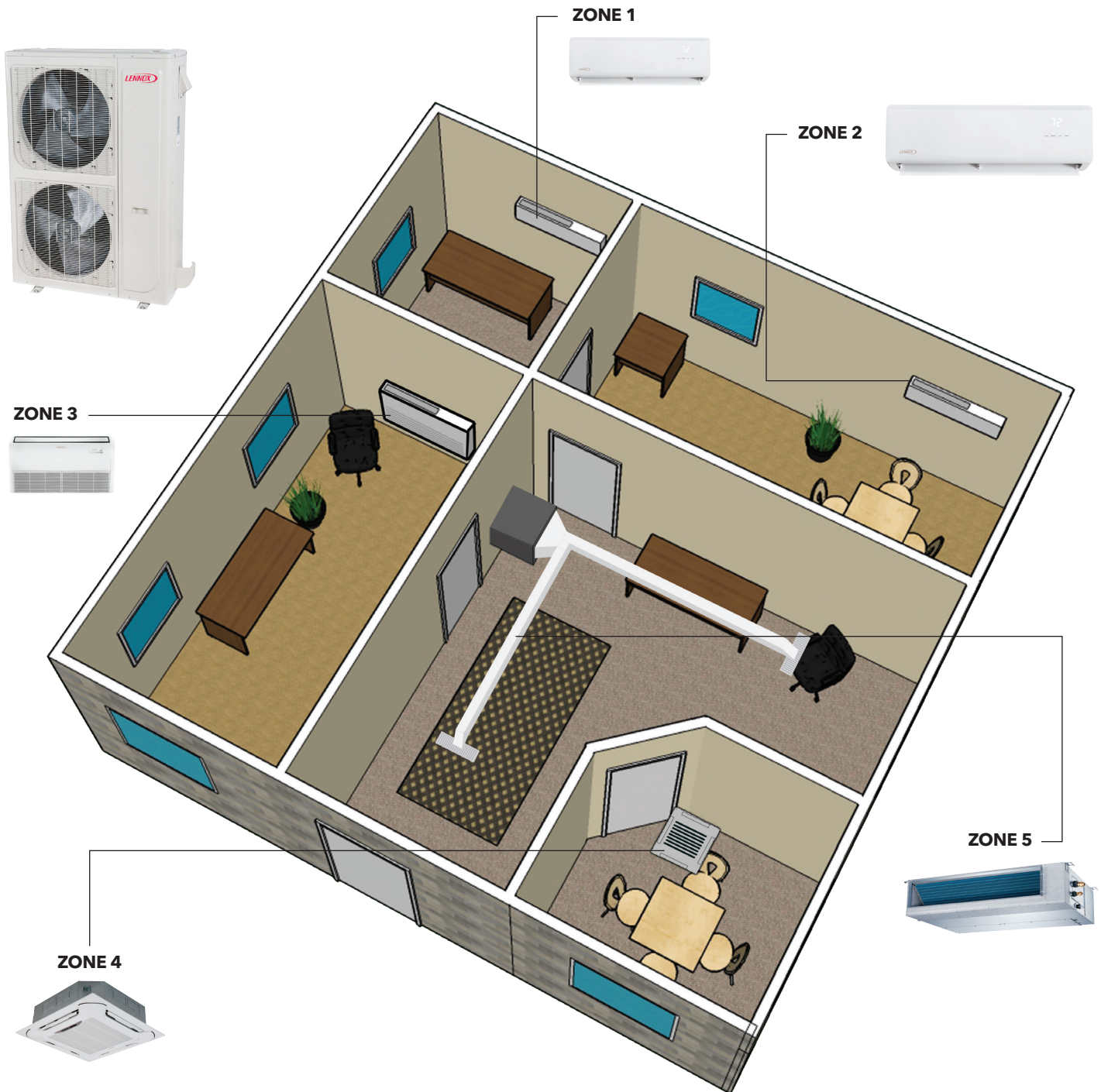
IMPROVED COMFORT AND CONTROL

Depending on the unit types you use to create a system, up to five different spaces can have their own heating or cooling comfort, with each space's indoor unit connecting to a single outdoor unit. Wireless, wired and programmable remote controller options are available for all mini-split systems. In addition, Lennox Mini-Split Systems can be controlled by the Lennox VRF Central Controller for complete, seamless integration.



MULTI-ZONE SYSTEMS

For larger areas or for multiple smaller areas in close proximity, Lennox® Multi-Zone Mini-Split Systems provide flexibility, comfort and individual temperature control. By using various unit types and sizes based on application, up to five different spaces can have their own heating and cooling comfort with each space's indoor unit connecting to the same outdoor unit.



INDOOR UNITS DESIGNED TO PROVIDE A MORE COMFORTABLE ENVIRONMENT.

A wide range of indoor unit types and tonnages create the right solution for every application.



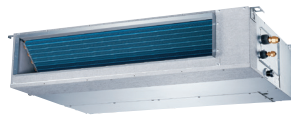
WALL-MOUNTED, NON-DUCTED INDOOR UNIT

- 9,000-36,000 BTUH
- 115V and 208-230V options
- Three-speed fan
- Three refrigerant outlet access points



CEILING-CASSETTE, NON-DUCTED INDOOR UNIT

- 9,000-48,000 BTUH
- 208-230V
- 360° airflow panel
- Four-speed fan
- Built-in condensate pump



MEDIUM STATIC, DUCTED INDOOR UNIT

- 9,000-48,000 BTUH
- 208-230V
- Slim, compact design
- Three-speed fan
- Built-in condensate pump
- Multiple return-air opening options
- Optional auxiliary heat support



CEILING/FLOOR, NON-DUCTED INDOOR UNIT

- 18,000-48,000 BTUH
- 208-230V
- Three-speed fan
- Two installation orientations
- Multiple refrigerant line access points

A number of automation and comfort-focused features mean occupants can work in their ideal environment without a second thought:

WHISPER-LOW SOUND LEVELS System operates with sound levels as low as 24 dBA.

LED READOUT PANEL WITH INFRARED RECEIVER Displays operation status and codes for maintenance and servicing.

24-HOUR TIMER Allows users to automatically turn the unit on or off on a desired schedule.

WASHABLE FILTER Preserves indoor air quality and reduces waste.

FLARE CONNECTIONS Equipped with flare fitting for quick and secure piping.

PREHEAT FUNCTION Prevents operation during heating mode until the indoor coil has sufficiently warmed.

SELF-CLEANING Wall-mounted units self-clean to prevent mold and bacteria growth.

AUTO RESTART Restores operation automatically following a power failure.

"FOLLOW ME" MODE Maintains the set temperature near the operator with extreme precision.

CONTROLS

Wireless, wired and programmable remote controller options are available for all systems. In addition, Lennox® Mini-Split Systems can be controlled by the Lennox VRF Central Controller for complete, seamless integration.



MP-SERIES HEAT PUMP MINI-SPLIT UNITS

Powerful and accommodating, Lennox MP-Series Mini-Split Systems provide single- and multi-zone cooling or heating flexibility for a wide range of applications.

- Efficiency ratings up to 24.5 SEER and 11.5 HSPF
- Single- and multi-zone compatible:
 - Single-zone available from 0.75 to 4 tons
 - Multi-zone available from 1.5 to 4 tons and supports up to 5 zones
- Supplies power to indoor unit allowing for single-point utility connection
- Low-noise operation with sound levels as low as 52.5 dBA
- Available in 208-230V and 115V, single-phase voltage options
- Excellent construction, reliability and warranties
- Base pan heater, standard with each unit, prevents ice buildup during heating operations
- Can help meet LEED requirements for efficiency and indoor air quality
- Complements the full line of Lennox VRF products



MP-Series mini-split systems performance

	NOM. TON	MODEL	COOLING DATA			HEATING DATA		PHYSICAL DATA	
			CAPACITY (BTUH)	SEER	EER	CAPACITY (BTU/H)	HSPF	DIMENSIONS W x D x H (IN.)	NET WT. (LBS.)
NON-DUCTED SINGLE-ZONE SYSTEMS	0.75	MPB009S4S-1L*	9,500	24.5	15.0	11,000	11.2	31.50 x 14.38 x 21.88	80
	1	MPB012S4S-1L*	12,000	22.0	13.0	12,000	10.2	31.50 x 14.38 x 21.88	80
	0.75	MPB009S4S-1P	9,000	23.5	14.9	9,800	10.8	30.38 x 12.63 x 21.88	62
	1	MPB012S4S-1P	12,000	22.7	13.7	12,000	11.0	31.50 x 14.38 x 21.88	77
	1.5	MPB018S4S-1P	18,000	21.0	13.0	18,000	10.4	33.25 x 13.00 x 27.50	107
	2	MPB024S4S-1P	24,000	20.7	13.7	25,000	11.5	37.24 x 16.14 x 31.89	137
	2.5	MPB030S4S-1P	30,000	19.8	11.5	30,000	9.4	37.25 x 16.14 x 31.89	149
	3	MPB036S4S-1P	36,000	17.5	9.0	38,000	10.5	37.25 x 16.38 x 31.88	149
4	MPB048S4S-1P	48,000	16.8	9.5	50,000	11.0	37.50 x 16.38 x 52.50	218	
DUCTED SINGLE-ZONE SYSTEMS	0.75	MPB009S4S-1P	9,000	20.5	13.5	10,000	11.5	30.38 x 12.63 x 12.88	62
	1	MPB012S4S-1P	12,000	21.5	12.5	12,000	11.5	31.50 x 14.38 x 21.88	77
	1.5	MPB018S4S-1P	18,000	19.0	12.5	18,000	10.5	33.25 x 13.00 x 27.50	95
	2	MPB024S4S-1P	24,000	21.5	12.5	24,400	11.0	37.25 x 16.38 x 31.88	137
	3	MPB036S4S-1P	36,000	16.5	9.0	40,000	11.5	37.25 x 16.38 x 31.88	149
	4	MPB048S4S-1P	48,000	17.4	9.2	49,500	10.3	37.50 x 16.38 x 52.50	218
NON-DUCTED MULTI-ZONE SYSTEMS	1.5	MPB018S4M-1P	18,000	22.5	12.5	19,000	10.3	33.27 x 14.29 x 27.64	106
	2.5	MPB030S4M-1P	28,000	23.0	12.5	28,000	10.3	37.24 x 16.14 x 31.89	150
	3	MPB036S4M-1P	36,000	22.5	11.5	36,000	10.2	37.24 x 16.14 x 31.89	157
	4	MPB048S4M-1P	48,000	22.4	12.5	48,000	10.2	37.48 x 16.34 x 52.48	224
DUCTED MULTI-ZONE SYSTEMS	1.5	MPB018S4M-1P	18,000	18.4	11.8	18,500	9.4	33.25 x 15.00 x 27.63	106
	2.5	MPB030S4M-1P	27,000	18.5	11.0	27,000	9.0	37.25 x 16.38 x 31.88	150
	3	MPB036S4M-1P	36,000	17.9	10.0	36,000	9.7	37.25 x 16.38 x 31.88	157
	4	MPB048S4M-1P	48,000	17.6	10.1	50,000	10.1	37.50 x 16.38 x 52.50	224

3-ton, wall-mount mini-split system

Based on the MP-Series heat pump mini-split units, the 3-ton 3PB/3WMB wall-mount system provides an extension to the standard heat pump line, allowing for even more application flexibility. The 3-ton, wall-mount unit is matched with its own 3-ton outdoor unit and sold as a system.

	NOM. TON	OUTDOOR MODEL	INDOOR MODEL	COOLING DATA			HEATING DATA		PHYSICAL DATA	
				CAPACITY (BTUH)	SEER	EER	CAPACITY (BTU/H)	HSPF	DIMENSIONS W x D x H (IN.)	NET WT. (LBS.)
3-TON, WALL-MOUNT SYSTEMS	3	3PB036S4S-1P	3WMB036S4-1P	36,000	16.0	8.6	36,000	8.5	37.25 x 16.38 x 31.88	146

All mini-split systems are tested and rated in accordance with ANSI/AHRI Standard 210/240. Cooling ratings, 95°F (35°C) outdoor air temperature and 80°F (27°C) db/67°F (19°C) wb entering indoor coil air. Heating ratings, 47°F (8°C) db/43°F (6°C) wb outdoor air temperature and 70°F (21°C) entering indoor coil air. NOTE: Due to Lennox' ongoing commitment to quality, all specifications, ratings and dimensions are subject to change. All ratings shown are for the highest-rated model in the tonnage size.

* 115V system.



ML-SERIES LOW AMBIENT HEAT PUMP MINI-SPLIT UNITS

Efficient, reliable and quiet, Lennox® ML-Series Mini-Split Heat Pump units provide maximum indoor comfort, even in negative outdoor temperatures.

- 100% heating and cooling capacity at 0°F, with a wide ambient temperature operating range:
 - Cooling: -22° to 122°F - Heating: -22° to 86°F
- Efficiency ratings up to 24 SEER and 12.5 HSPF
- Single- and multi-zone compatible:
 - Single-zone available from 0.75 to 2 tons
 - Multi-zone available from 1.5 to 3 tons and supports up to 4 zones
- Supplies power to indoor units allowing for single-point utility connection
- Low-noise operation, with sound levels as low as 52 dB
- Available in 208-230V, single-phase voltage
- Excellent construction, reliability and warranties
- Base pan heater, standard with each unit, prevents ice buildup during heating operations
- Can help meet LEED requirements for efficiency and indoor air quality
- Complements the full line of Lennox VRF products



ML-Series low ambient mini-split systems performance

	NOM. TON	MODEL	COOLING DATA			HEATING DATA		PHYSICAL DATA	
			CAPACITY (BTUH)	SEER	EER	CAPACITY (BTU/H)	HSPF	DIMENSIONS W x D x H (IN.)	NET WT. (LBS.)
NON-DUCTED SINGLE-ZONE SYSTEMS	0.75	MLA009S4S-1P	9,000	24.0	14.5	10,900	10.5	34.25 x 14.63 x 21.75	88
	1	MLA012S4S-1P	12,000	22.0	12.5	12,000	10.0	34.25 x 14.63 x 21.75	88
	1.5	MLA018S4S-1P	17,000	20.0	12.5	18,000	10.0	36.00 x 14.75 x 27.63	108
	2	MLA024S4S-1P	24,000	20.0	12.5	24,000	10.0	40.75 x 18.00 x 31.88	136
DUCTED SINGLE-ZONE SYSTEMS	0.75	MLA009S4S-1P	9,000	23.0	13.5	10,000	12.0	34.25 x 14.63 x 21.75	88
	1	MLA012S4S-1P	12,000	20.5	12.5	12,000	11.0	34.25 x 14.63 x 21.75	88
	1.5	MLA018S4S-1P	16,500	19.6	12.5	19,000	11.0	36.00 x 14.75 x 27.63	108
	2	MLA024S4S-1P	24,000	20.5	12.5	24,000	12.5	40.75 x 18.00 x 31.88	136
NON-DUCTED MULTI-ZONE SYSTEMS	1.5	MLA018S4M-1P	19,000	21.5	12.5	20,000	9.8	40.63 x 16.63 x 31.88	150
	2.5	MLA030S4M-1P	28,000	22.0	13.0	28,000	10.4	40.63 x 16.63 x 31.88	157
	3	MLA036S4M-1P	36,000	21.5	13.5	36,000	10.5	41.13 x 16.38 x 52.50	224
DUCTED MULTI-ZONE SYSTEMS	1.5	MLA018S4M-1P	18,000	16.8	11.3	18,000	8.6	40.63 x 16.63 x 31.88	150
	2.5	MLA030S4M-1P	27,000	17.6	10.8	27,000	9.1	40.63 x 16.63 x 31.88	157
	3	MLA036S4M-1P	35,000	17.0	10.8	36,000	9.2	41.13 x 16.38 x 52.50	224

All mini-split systems are tested and rated in accordance with ANSI/AHRI Standard 210/240. Cooling ratings, 95°F (35°C) outdoor air temperature and 80°F (27°C) db/67°F (19°C) wb entering indoor coil air. Heating ratings, 47°F (8°C) db/43°F (6°C) wb outdoor air temperature and 70°F (21°C) entering indoor coil air. NOTE: Due to Lennox' ongoing commitment to quality, all specifications, ratings and dimensions are subject to change. All ratings shown are for the highest-rated model in the tonnage size.

MC-Series cooling only mini-split systems performance

	NOM. TON	MODEL	COOLING DATA			PHYSICAL DATA	
			CAPACITY (BTUH)	SEER	EER	DIMENSIONS W x D x H (IN.)	NET WT. (LBS.)
NON-DUCTED SINGLE ZONE SYSTEMS	1	MCA012S4S-1L	12,000	16.5	10	30.38 x 12.63 x 21.88	63
	0.75	MCA009S4S-1P	9,000	19	11.1	30.38 x 12.63 x 21.88	54
	1	MCA012S4S-1P	11,500	19	11.1	30.38 x 12.63 x 21.88	55
	1.5	MCA018S4S-1P	17,000	20	10.8	30.38 x 12.63 x 21.88	66
	2	MCA024S4S-1P	22,000	19	10.9	33.25 x 15 x 27.63	89

SOLUTIONS FOR CUSTOMIZED COMFORT

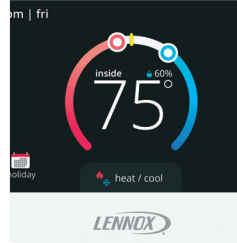
Don't just choose a Lennox product—choose a Lennox® Commercial Comfort System.

These complete packages of HVAC solutions provide tools to create a healthy and comfortable environment.



PACKAGED UNITS

- Emergence® Rooftop Units
- Strategos® Rooftop Units
- Landmark® Rooftop Units
- Raider® Rooftop Units
- Accessories



COMMERCIAL CONTROLS

- iCON™ Building Automation System
- Systems Integration Solutions
- Commercial Thermostats



VRF

- Outdoor Units
- Indoor Units
- Controls
- Accessories



MINI-SPLIT SYSTEMS

- Heat Pump Mini-Splits
- Low Ambient Heat Pump Mini-Splits
- Indoor Units
- Controls



HEATING

- Unit Heaters
- Duct Furnaces
- Furnaces



INDOOR AIR QUALITY

- Dedicated Outdoor Air System™
- Humiditrol® Dehumidification System
- Demand Control Ventilation
- Air Filters
- UVC Lamps



SPLIT SYSTEMS

- Elite® Series Large Split Systems
- S-Class® Air Conditioners/Heat Pumps
- T-Class™ Air Conditioners/Heat Pumps
- Air Handlers
- Indoor Coils

