

# DAIKIN AURORA SINGLE ZONE INVERTER HEAT PUMP SYSTEMS

FLOOR-MOUNTED UNITS  
19.5 SEER2 / Up to 9.7 HSPF2 / Up to 11.5 EER2  
INVERTER (VARIABLE-SPEED) COMPRESSOR

**Today, the air is perfect.** Perfect temperature. Perfect humidity. Perfectly clean and fresh, like just after a rainstorm. And the only thing more perfect than this outdoor scenario is that it's all happening inside. Because that's where we work. That's where we play, where we sleep, where we truly live.

And that's why at Daikin, we aim to make the air inside as refreshing as the outside. Better comfort. Better control and efficiency. Better quality. So you can create your own unique ecosystem. And everyday is perfect. **Inside and out.**

## Daikin *AURORA* Single Zone Inverter Floor-Mounted Heat Pump Systems



### *Perfecting The Air We Share*

A better understanding of how people inhabit their living spaces has led to products designed to create indoor environments that help use energy resources more effectively. Heat pumps extract or reject heat from the outside air, even in cold weather. They use an electrically powered compressor and are extremely effective at

heating and cooling an apartment or a house. Daikin heat pumps are quiet and discreet, and use state-of-the-art technology to keep your energy bills low. With a Daikin heat pump, a large portion of the energy used to heat or cool your home comes from the outside air, a free and infinitely renewable resource.




## Comfort

We offer a wide range of products, and always provide you with the ideal solution, whether for an apartment, condo or a house. Our units are whisper quiet and, with their specially designed airflow pattern, they create your ideal indoor climate.

Daikin units are designed to include features that let you create your own unique ecosystem. From the wide angle louver design to the auto-swing and comfortable mode controller settings, effective heating and cooling is ensured throughout the space.

## Smart inverter technology

 Integrated with an inverter (variable-speed) compressor, Daikin systems deliver the capacity required to maintain desired room conditions, typically reducing energy consumption by up to 30% or more (compared to traditional fixed-speed ducted systems). This technology minimizes temperature fluctuations and provides continuous cooling and heating comfort.

## Energy efficiency

Our products are designed to be highly efficient all year round, and their low energy consumption is reflected in low energy bills for you.

## Control

Our expertise makes life easier for you, allowing you to control your system via a smartphone app\*\* or a user-friendly remote control.

## Reliability

Daikin products are renowned for their reliability. And you can rely on outstanding limited warranties\* to match.



\* Complete warranty details available from your local dealer/contractor or at [www.daikincomfort.com](http://www.daikincomfort.com). To receive the 12-Year Parts Limited Warranty, online registration must be completed within 60 days of installation. Online registration is not required in California or Québec. If product installed in a commercial application, limited warranty period is 5 years. The duration of warranty coverages in Texas differs in some cases.

\*\* Adaptor required.

# Daikin *AURORA* Single Zone Inverter Heat Pump System

Designed for living:  
Solutions for hot and cold climates.

Living in colder climates doesn't mean a heat pump isn't a viable option to heat each space in your home or business, nor does living in warmer climates preclude the use of a heat pump as a viable option for cooling. The outdoor units of this Daikin *AURORA* heat pump system have been redesigned to withstand extreme weather conditions, even when it is down to -13°F WB (-25°C WB) or up to 115°F DB (46°C DB) for year round comfort.

## Premium comfort features:

- » **Energy Efficient** – 19.5 SEER2 / Up to 9.7 HSPF2 / Up to 11.5 EER2 for ultra-efficient cooling and heating operation and reduced operating costs compared to conventional lower-efficiency systems.
- » **Advanced Filtration** – Long life, washable filters.
- » **Enhanced Capacity** – Up to 100% rated cooling capacity at 104°F DB (40°C DB).
- » Up to 90% rated cooling capacity at 115°F DB (46°C DB)
- » Up to 100% rated heating capacity at 5°F WB (-15°C WB) and confirmed continuous operation as low -13°F WB (-25°C WB) ambient temperature

## Ideal solution for:

- » Primary living areas (master bedrooms and living rooms)
- » Hot or cold rooms
- » Rooms with poor air flow
- » Renovations and remodeling
- » Basements, attics and garages
- » New construction

## Outdoor unit features:



**Anti-Corrosion Treatment on Heat Exchanger**



**Auto-Restart** – The unit memorizes the operation mode, airflow and temperature settings. Should there be a power failure when the unit is in operation, it will automatically return to the same operating conditions when the power is restored.



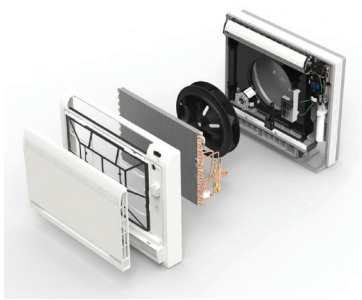
**Outdoor Unit Quiet Operation**



**DAIKIN AURORA SINGLE ZONE INVERTER**  
**19.5 SEER2 / Up to 9.7 HSPF2 / Up to 11.5 EER2**  
**INVERTER (VARIABLE-SPEED) COMPRESSOR**

**Discreet floor-mounted unit providing high efficiency and comfort.**

Floor-mounted units are simple to install and can be setup in various configurations, on the floor or hanging low on a wall. Its low height enables the unit to fit perfectly beneath a window. The airflow distribution pattern of Daikin's floor-mounted unit is ideal for cooling and heating a space, and is a perfect replacement to traditional radiant systems or window air conditioning units.



**Indoor unit features:**



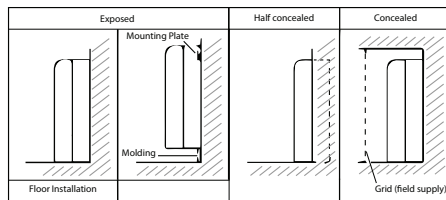
**Air Outlet Selection Switch** – Choose between air blowing out of the upper outlet only, or have the system automatically decide a blow pattern depending on mode and conditions (recommended setting).



**Econo Mode** limits the maximum operating current and power consumption of the outdoor unit by approximately 30% during start-up.



**Titanium Apatite Photocatalytic Air Purifying Filter** – This filter combines the air-purifying filter and titanium apatite photocatalytic deodorizing filter in a single highly effective unit.



The floor mount unit can be installed against a wall, recessed, or concealed.

**Knowledge is power**

The new minimum efficiency standards are based upon new metrics (SEER2/EER2/HSPF2) derived from a new test procedure (M1) rather than the historical metrics (SEER/EER/HSPF) from the old test procedure (M).

Testing procedures and requirements for developing efficiency ratings will now be more stringent with the new 2023 DOE regulations. The prior M testing procedure is being replaced by the M1 testing procedure for 2023 compliance.

**Why is COP important?**

The COP of a heat pump is the ratio of:  $COP = \frac{\text{energy out}}{\text{energy in}}$   
 When the COP is >1, the result is a system providing more heating energy than energy consumed. As the COP2 increases, the higher the efficiency — resulting in lower utility costs.

Up to	
<b>19.5 SEER2</b>	<b>11.5 EER2</b>
<b>9.7 HSPF2</b>	<b>3.86 COP</b> <small>(Coefficient of Performance)</small>

Daikin AURORA Single Zone Heat Pump Efficiency Ratings

**COP** |  |  |  | **AURORA 3.86**  
(FloorMount Unit)



## Individual comfort and control.

Daikin systems come standard with an infrared remote controller allowing you to access all functions at the click of a button.

## From anywhere in the world. Or your living room.

It can happen to anyone. You forgot to change the temperature of your heat pump system or air conditioner before leaving the house, or you will be delayed returning home and wish to avoid needlessly heating or cooling your home. What in the past would have resulted in wasted energy is no longer a problem. With the DKN App, you are always in control. You can use your tablet or smart-phone to access your Daikin system via the internet\*.

\*Requires purchase and installation of AZAI6WSPDKB Wi-Fi adaptor.



## Daikin One+ Smart Thermostat



The Daikin *One+* smart thermostat is now available for single and multi-zone indoor unit models. With the new translation adaptor, connecting the Daikin *One+* smart thermostat provides several user features including remote monitoring, control and geofencing using the Daikin *One* home app, *Google*, and *Amazon* voice assistants. Learn more at [www.daikinone.com](http://www.daikinone.com).

\*\* Note that the handheld remote that comes with the indoor unit should not be used together with the Daikin *One+* smart thermostat.

## Daikin DKN Plus Interface



The new Daikin DKN Plus Interface (AZAI6WSPDKC) enables the energy-efficient control of Daikin air conditioners by a third-party thermostat or an automation system. With this interface, third-party devices or systems can control the Single Zone and Multi-Zone indoor units through DKN Cloud NA App via Wi-Fi, Cloud API, Modbus®, BACnet™ MS/TP, or thermostat relay contacts. This interface can be commissioned easily through the DKN Cloud NA app via Bluetooth® Low Energy (BLE). Learn more at [www.daikinac.com](http://www.daikinac.com).

## Daikin SplitXpress Selection Tool

The new interactive *SplitXpress* mobile app and website provide a complete product selection tool to streamline system selection for single and multi-zone projects. Users can create equipment selections and add accessories / pricing details to quickly share quotes with customers. Available for free on the *App Store* (iOS) and *Google Play* (Android), and at <https://splitxpress.daikincity.com>.



# SPECIFICATIONS

Unit Class	Indoor Unit Model # / Dimensions (HxWxD)	Outdoor Unit Model # / Dimensions (HxWxD)	Efficiency Rating	Lowest Sound Level (dB(A))		Weight (lbs)		AHRI #
				Indoor**	Outdoor	Indoor	Outdoor	
09	FVXS09WVJU9	RXL09WMVJU9	19.5 SEER2 / 9.7 HSPF2 / 11.5 EER2 /	23	49	31	63	212506084
	23-5/8 x 27-9/16 x 8-1/4	21-5/8 x 26-9/16 x 11-3/16						
12	FVXS12WVJU9	RXL12WMVJU9	19.5 SEER2 / 9.4 HSPF2 / 11 EER2	24	50	31	73	212506082
	23-5/8 x 27-9/16 x 8-1/4	21-5/8 x 26-9/16 x 11-3/16						
15	FVXS15WVJU9	RXL15WMVJU9	19.5 SEER2 / 9.3 HSPF2 / 11.5 EER2	32	50	31	109	212506084
	23-5/8 x 27-9/16 x 8-1/4	28-15/16 x 34-1/4 x 12-5/8						

\*\*On SL fan speed



Use of the AHRI Certified® mark indicates a manufacturer's participation in the certification program. For verification of certification for individual products, go to [www.ahridirectory.org](http://www.ahridirectory.org)



## About Daikin:

Daikin Industries, Ltd. (DIL) is a global Fortune 1000 company and is recognized as one of the largest HVAC (Heating, Ventilation, Air Conditioning) manufacturers in the world. Founded in 1924, Daikin is approaching 100 years of HVAC worldwide leadership. DIL is primarily engaged in developing indoor comfort systems and refrigeration products for residential, commercial, and industrial applications. Its consistent success is derived, in part, from a focus on innovative, energy-efficient, and premium quality indoor climate and comfort management solutions.

## WARNINGS:

- » Always use a licensed installer or contractor to install this product. Do not try to install the product yourself. Improper installation can result in water or refrigerant leakage, electrical shock, fire or explosion.
- » Use only those parts and accessories supplied or specified by Daikin. Ask a licensed contractor to install those parts and accessories. Use of unauthorized parts and accessories or improper installation of parts and accessories can result in water or refrigerant leakage, electrical shock, fire or explosion.
- » Read the User's Manual carefully before using this product. The User's Manual provides important safety instructions and warnings. Be sure to follow these instructions and warnings.
- » For any inquiries, contact your local Daikin sales office.

*App Store is a registered trademark of Apple Inc.*

*Google Play and the Google Play logo are trademarks of Google LLC.*

*The Bluetooth® word mark and logos are registered trademarks owned by Bluetooth SIG, Inc., and any use of such marks are under license.*

*BACnet™ is a trademark of ASHRAE.*

*Modbus® is a registered trademark of Schneider Electric USA, Inc.*



## ADDITIONAL INFORMATION

Before purchasing this appliance, read important information about its estimated annual energy consumption, yearly operating cost, or energy efficiency rating that is available from your retailer.



Our continuing commitment to quality products may mean a change in specifications without notice.

© 2023 **DAIKIN COMFORT TECHNOLOGIES NORTH AMERICA, INC.** · Houston, Texas · USA · [www.daikincomfort.com](http://www.daikincomfort.com) or [www.daikinac.com](http://www.daikinac.com)

CB-AURSZFSTH 06-23