



# DFVE\* (115V)



*MULTI-POSITION, VARIABLE-SPEED,  
ECM-BASED AIR HANDLER  
WITH INTERNAL EEV  
COMMUNICATING  
FOR DAIKIN FIT MATCHUPS  
1½ TO 5 TONS*

### ■ Contents

Nomenclature .....	2
Product Specifications .....	3
Dimensions .....	4
Wiring Diagram .....	5
Accessories .....	6

### ■ Product Features

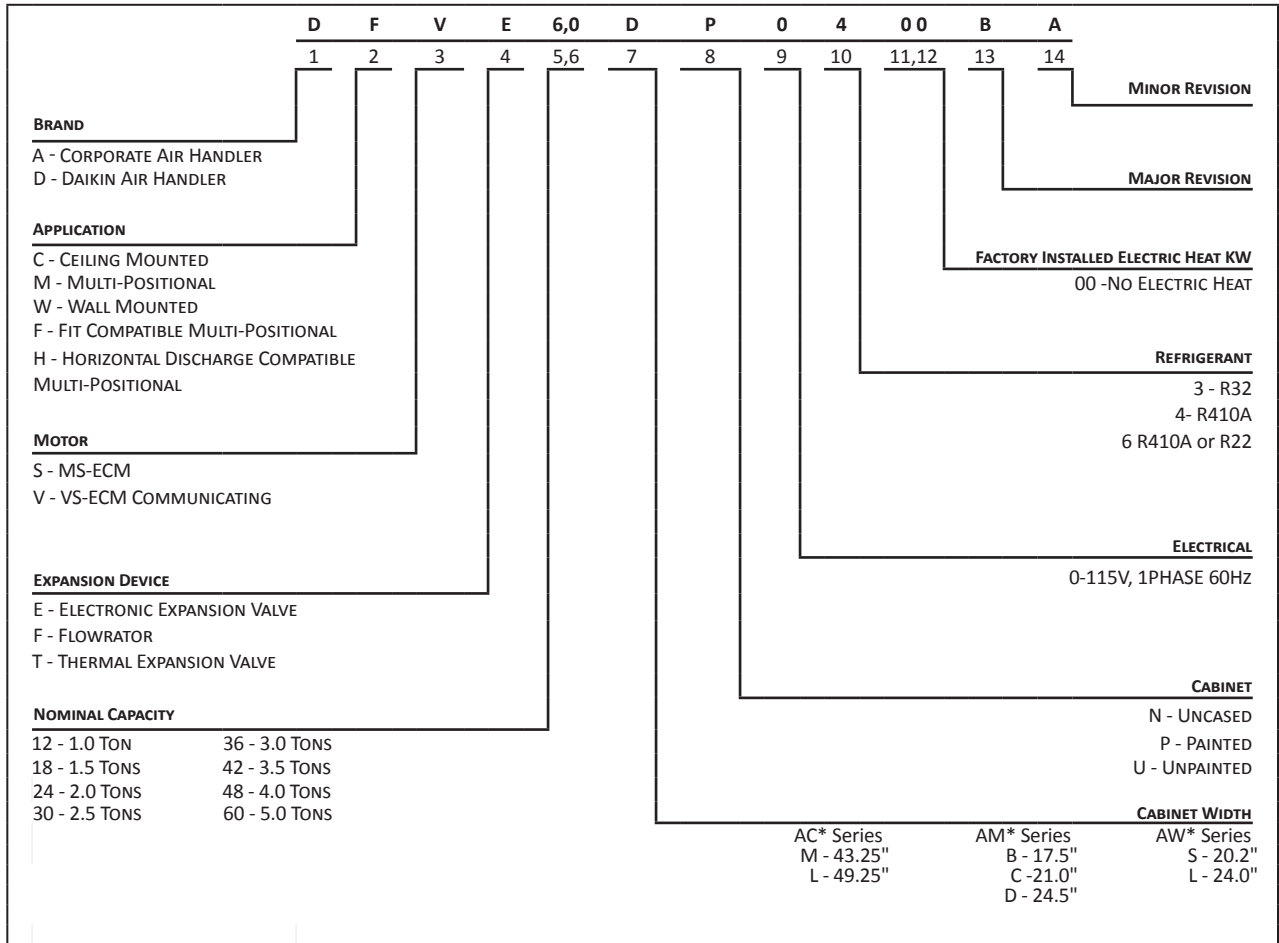
- Electronic Expansion Valve (EEV) for cooling and heat pump applications.
- 7mm evaporator coil tube size
- Variable-speed ECM blower motor
- Compatible with Daikin *One+* smart thermostat and other Daikin communicating equipment
- Provides constant CFM over a wide range of static pressure conditions independent of duct system
- CFM indicator
- Thermostat provides adjustable low CFM for efficient fan-only operation
- All-aluminum evaporator coil
- Fault recall of six most recent faults
- Improved humidity and comfort control
- AHRI certified; ETL listed
- UL 60335 2-40 Compliant

### ■ Cabinet Features

- Cabinet air leakage less than 2.0% at 1.0 inch H<sub>2</sub>O when tested in accordance with ASHRAE standard 193
- Cabinet air leakage less than 1.4% at 0.5 inch H<sub>2</sub>O when tested in accordance with ASHRAE standard 193
- Horizontal or vertical configuration capabilities
- 21" depth for easier attic access
- DecaBDE-free thermoplastic drain pan with secondary drain connections
- Screw-less sides and back helps to reduce condensation when installed in humid locations
- Foil-faced insulation covers the internal casing to reduce cabinet condensation
- Galvanized, leather grain-embossed finish
- Glue-less cabinet insulation retention
- Tool-less filter access

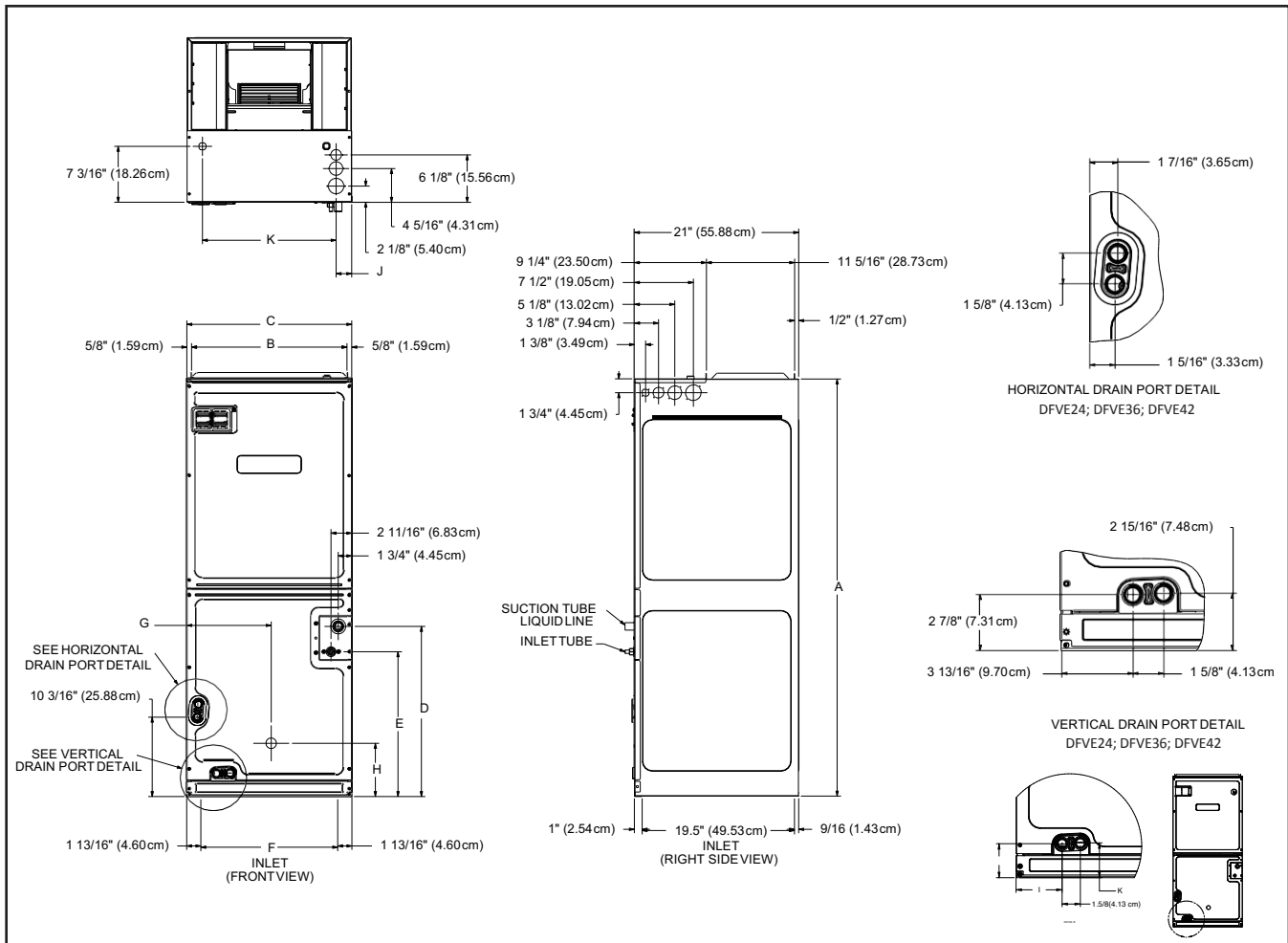


\* Complete warranty details available from your local dealer or at [www.daikincomfort.com](http://www.daikincomfort.com). To receive the 12-Year Parts Limited Warranty, online registration must be completed within 60 days of installation. Additional requirements for annual maintenance are required for the Unit Replacement Limited Warranty. Online registration and some of the additional requirements are not required in California or Québec. The duration of warranty coverage in Texas and Florida differs in some cases.



MODEL	DFVE24 BP0400	DFVE36 CP0400	DFVE42 CP0400	DFVE48 DP0400	DFVE60 DP0400
<b>NOMINAL TONS</b>	<b>2.0Ton</b>	<b>3.0Ton</b>	<b>3.5Ton</b>	<b>4.0Ton</b>	<b>5.0Ton</b>
<b>BLOWER</b>					
Diameter	9½"	10⅝"	10⅝"	12"	12"
Width	6"	10⅝"	10⅝"	10⅝"	10⅝"
<b>TUBING CONNECTION</b>					
Liquid - Refrigerant	⅜"	⅜"	⅜"	⅜"	⅜"
Suction - Refrigerant	¾"	⅞"	⅞"	⅞"	⅞"
Coil Drain Connection (NPT)	¾"	¾"	¾"	¾"	¾"
<b>ELECTRICAL DATA</b>					
Voltage - Phase	115-1	115-1	115-1	115-1	115-1
Min Circuit Ampacity	7.1	10.4	10.4	10.4	10.4
Max. Overcurrent Device (amps)	15	15	15	15	15
Minimum VAC	103	103	103	103	103
Maximum VAC	126	126	126	126	126
<b>Blower Motor</b>					
FLA	5.7	8.3	8.3	8.3	8.3
HP	½	¾	¾	¾	¾
<b>SHIP WEIGHT (LBS.)</b>	115	140	140	150	167

# DIMENSIONS



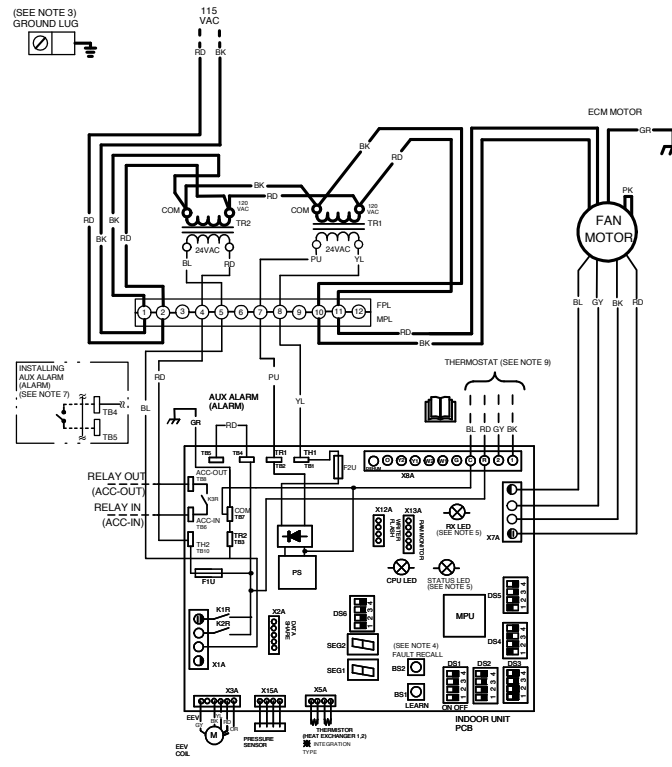
MODEL	A	B	C	D	E	F	G	H	I	J	K
DFVE24BP0400	45	16 <sup>3</sup> / <sub>8</sub>	17 <sup>1</sup> / <sub>2</sub>	15 <sup>5</sup> / <sub>8</sub>	12	14 <sup>1</sup> / <sub>2</sub>	9	12 <sup>3</sup> / <sub>4</sub>	3 <sup>13</sup> / <sub>16</sub>	2 <sup>7</sup> / <sub>8</sub>	2 <sup>15</sup> / <sub>16</sub>
DFVE36CP0400	53 <sup>7</sup> / <sub>16</sub>	19 <sup>7</sup> / <sub>8</sub>	21	21 <sup>13</sup> / <sub>16</sub>	18 <sup>5</sup> / <sub>8</sub>	17 <sup>11</sup> / <sub>16</sub>	10 <sup>13</sup> / <sub>16</sub>	6 <sup>13</sup> / <sub>16</sub>	3 <sup>13</sup> / <sub>16</sub>	2 <sup>7</sup> / <sub>8</sub>	2 <sup>15</sup> / <sub>16</sub>
DFVE42CP0400	53 <sup>7</sup> / <sub>16</sub>	19 <sup>7</sup> / <sub>8</sub>	21	21 <sup>13</sup> / <sub>16</sub>	18 <sup>5</sup> / <sub>8</sub>	17 <sup>11</sup> / <sub>16</sub>	10 <sup>13</sup> / <sub>16</sub>	6 <sup>13</sup> / <sub>16</sub>	3 <sup>13</sup> / <sub>16</sub>	2 <sup>7</sup> / <sub>8</sub>	2 <sup>15</sup> / <sub>16</sub>
DFVE48DP0400	53 <sup>7</sup> / <sub>16</sub>	23 <sup>5</sup> / <sub>16</sub>	24 <sup>1</sup> / <sub>2</sub>	21 <sup>1</sup> / <sub>2</sub>	18 <sup>5</sup> / <sub>16</sub>	21 <sup>3</sup> / <sub>16</sub>	12 <sup>3</sup> / <sub>4</sub>	6 <sup>7</sup> / <sub>8</sub>	4	3	3 <sup>3</sup> / <sub>32</sub>
DFVE60DP0400	58	23 <sup>5</sup> / <sub>16</sub>	24 <sup>1</sup> / <sub>2</sub>	26 <sup>5</sup> / <sub>8</sub>	22 <sup>5</sup> / <sub>8</sub>	21 <sup>3</sup> / <sub>16</sub>	12 <sup>5</sup> / <sub>16</sub>	13 <sup>1</sup> / <sub>4</sub>	4	3	3 <sup>3</sup> / <sub>32</sub>

## RATED INDOOR AIRFLOW RATE [SCFM]

ID UNIT	OD UNIT	STATIC PRESSURE [wc]								
		0.1	0.2	0.3	0.4	0.5	0.6	0.7	0.8	0.9
DFVE24BP0400	DZ6VSA1810A*	610	610	610	610	610	610	610	610	610
	DZ6VSA2410A*	800	800	800	800	800	800	800	800	800
DFVE36CP0400	DZ6VSA241EA*	800	800	800	800	800	800	800	800	800
	DZ6VSA3010A*	1010	1010	1010	1010	1010	1010	1010	1010	1010
DFVE42CP0400	DZ6VSA3610A*	1260	1260	1260	1260	1260	1260	1260	1260	1260
	DZ6VSA361EA*	1260	1260	1260	1260	1260	1260	1260	1260	1260
DFVE48DP0400	DZ6VSA4210A*	1320	1320	1320	1320	1320	1320	1320	1320	1320
	DZ6VSA361EA*	1260	1260	1260	1260	1260	1260	1260	1260	1260
DFVE60DP0400	DZ6VSA4210A*	1320	1320	1320	1320	1320	1320	1320	1320	1320
	DZ6VSA4810A*	1380	1380	1380	1380	1380	1380	1380	1380	1380
	DZ6VSA361EA*	1260	1260	1260	1260	1260	1260	1260	1260	1260
	DZ6VSA4210A*/DZ6VSA421EA*	1320	1320	1320	1320	1320	1320	1320	1320	1320
	DZ6VSA4810A*/DZ6VSA481EA*	1380	1380	1380	1380	1380	1380	1380	1380	1380
	DZ6VSA6010A*	1640	1640	1640	1640	1640	1640	1640	1640	1640

\*The chart is for information only. For satisfactory operation, external static pressure must not exceed 0.5 wc.

\*Unit may provide different SCFM during electrical heater operation. See IO manual for the airflow rate.



NOTES:

1. MANUFACTURER'S SPECIFIED REPLACEMENT PARTS MUST BE USED WHEN SERVICING.
2. IF ANY OF THE ORIGINAL WIRES AS SUPPLIED WITH THIS UNIT MUST BE REPLACED, IT MUST BE REPLACED WITH WIRING MATERIAL HAVING A TEMPERATURE RATING OF AT LEAST 105°C. USE COPPER CONDUCTORS ONLY.
3. UNIT MUST BE PERMANENTLY GROUND AND CONFORMED TO N.E.C AND LOCAL CODES.
4. TO RECALL THE LAST 6 FAULTS, MOST RECENT TO LEAST RECENT, DEPRESS FAULT RECALL BUTTON FOR MORE THAN 2 SECONDS WHILE IN STANDBY (NO THERMOSTAT INPUTS).
5. RED STATUS LED PROVIDES NETWORK STATUS. GREEN RX LED INDICATES NETWORK TRAFFIC. USE LEARN BUTTON TO RESET NETWORK.
6. THE POSITION OF SELECTOR SWITCHES (DS1 - DS6) INDICATE FACTORY SETTING.
7. REMOVE SHORT RED WIRE AND PUT AUX ALARM SWITCH WHEN INSTALLING AUX ALARM SWITCH.
8. HEATER KIT IS NOT COMPATIBLE WITH THIS MODEL.
9. USE N.E.C CLASS 2 WIRE.

INTEGRATED CONTROL:

- LOW VOLTAGE
- LOW VOLTAGE FIELD
- HIGH VOLTAGE
- HIGH VOLTAGE FIELD
- JUNCTION
- TERMINAL
- INTERNAL TO
- RESISTOR
- OVERCURRENT PROT. DEVICE
- PLUG CONNECTION
- EQUIPMENT GROUND
- FIELD GROUND
- DIP SWITCH (OFF)
- ON OFF
- READ THE INSTRUCTIONS

COLOR CODES:

- BL - BLUE
- RD - RED
- YL - YELLOW
- OR - ORANGE
- BK - BLACK
- GY - GREY
- BR - BROWN
- GR - GREEN
- PU - PURPLE
- WH - WHITE
- PK - PINK

COMPONENT CODES:

- DS1 - DS6 — SELECTOR SWITCH
- TL — THERMAL LIMIT
- TR — TRANSFORMER
- F1U, F2U — FUSE LINK
- FPL — FEMALE PLUG
- MPL — MALE PLUG



0140A00896-A

Wiring is subject to change. Always refer to the wiring diagram on the unit for the most up-to-date wiring.

**WARNING**

**High Voltage:** Disconnect all power before servicing or installing this unit. Multiple power sources may be present. Failure to do so may cause property damage, personal injury, or death.

**DOWNFLOW KIT**

DFKE-02
DFVE24BP0400
DFVE36CP0400
DFVE42CP0400
DFVE48DP0400
DFVE60DP0400

**CONDENSATE MANAGEMENT KITS\***

CMK0015	CMK0016	CMK0017
DFVE24BP0400	DFVE36CP0400	DFVE60DP0400
	DFVE42CP0400	
	DFVE48DP0400	

\*For Horizontal application only.

**HIGH HUMIDITY KITS**

HHK0001	HHK0002	HHK0003
DFVE24BP0400	DFVE36CP0400	DFVE60DP0400
	DFVE42CP0400	DFVE48DP0400

**MERV 15 AIR CLEANERS**

CHASSIS	DAIKIN PREMIUM AIR CLEANER	FILTER SIZE	REPLACEMENT FILTER PART #
B	DV15-2117-AB	21"x17"	0160M00013
C	DV15-2121-AC	21"x21"	0160M00014
D	DV15-2124-AD	21"x24"	0160M00015

**PERMANENT 1" FILTERS**

CHASSIS	PART#	SIZE
B	ALFH16201E	16.0" x 20.0"
C	ALFH1912201E	19.5" x 20.0"
D	ALFH20231E	23.0" x 20.0"

**15" SINGLE LAMP UV COIL PURIFIER**

MODEL	POWER MOD	REM CORD
UC18S15-24	UCP-16015	UCP-16016
UC18S15-24B	UCP-16014	UCP-16016



