



*MULTI-POSITION, VARIABLE-SPEED,  
ECM-BASED AIR HANDLER  
WITH INTERNAL EEV  
COMMUNICATING  
FOR DAIKIN FIT MATCHUPS  
1½ TO 5 TONS*

■ **Contents**

Nomenclature .....	2
Product Specifications .....	3
Dimensions .....	4
Heat Kit Data.....	5
Wiring Diagram .....	6
Accessories .....	7

■ **Product Features**

- Electronic Expansion Valve (EEV) for cooling and heat pump applications.
- 7mm evaporator coil tube size
- Variable-speed ECM blower motor
- Compatible with Daikin *One+* smart thermostat and other Daikin communicating equipment
- Provides constant CFM over a wide range of static pressure conditions independent of duct system
- CFM indicator
- Thermostat provides adjustable low CFM for efficient fan-only operation
- All-aluminum evaporator coil
- Fault recall of six most recent faults
- Improved humidity and comfort control
- AHRI certified; ETL listed
- UL 60335 2-40 Compliant

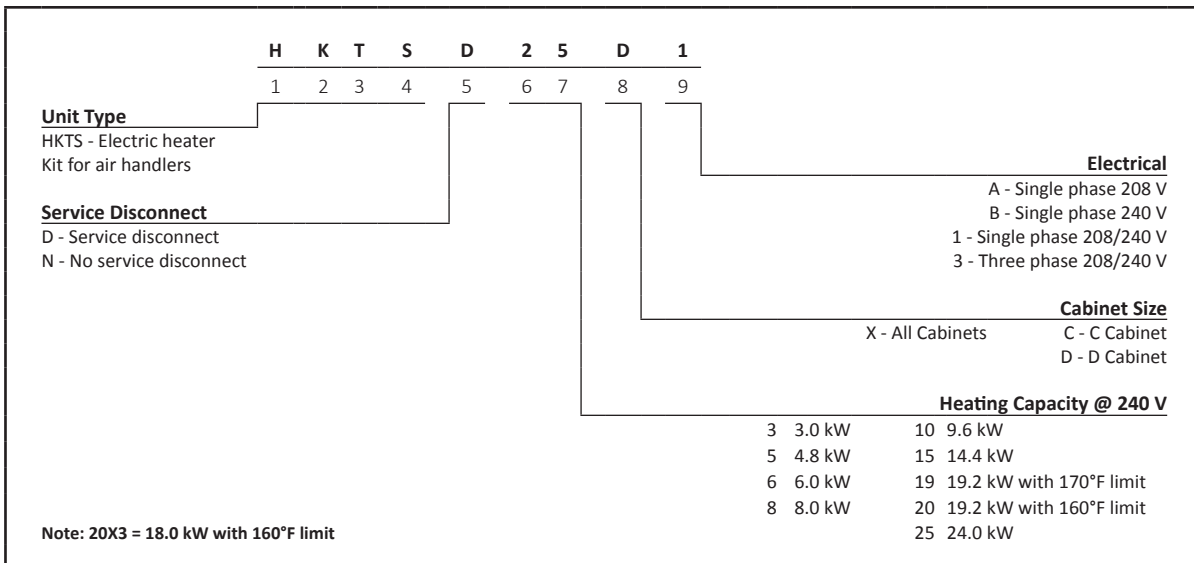
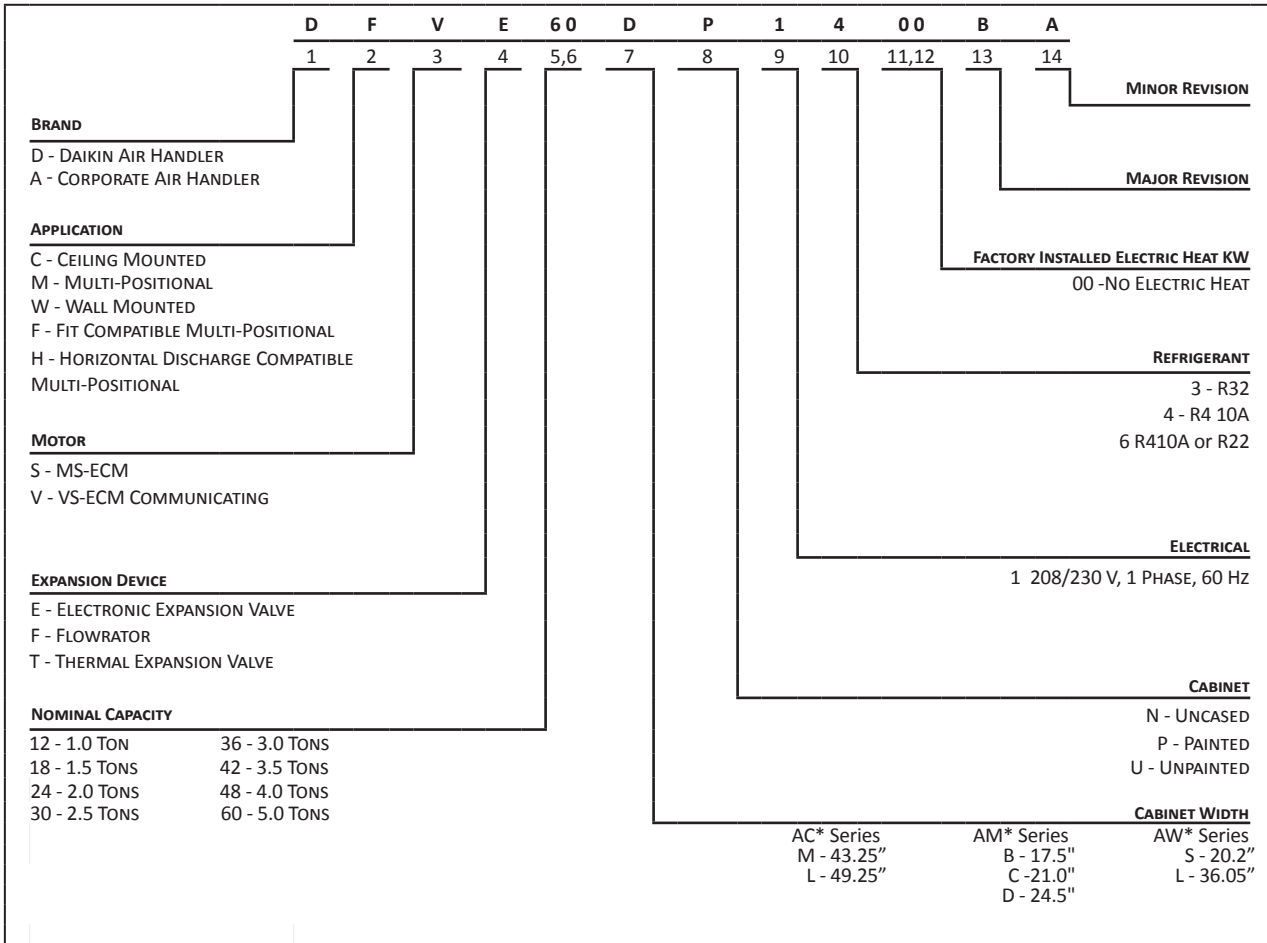
■ **Cabinet Features**

- Cabinet air leakage less than 2.0% at 1.0 inch H<sub>2</sub>O when tested in accordance with ASHRAE standard 193
- Cabinet air leakage less than 1.4% at 0.5 inch H<sub>2</sub>O when tested in accordance with ASHRAE standard 193
- 3 kW – 25 kW electric heater kits
- Horizontal or vertical configuration capabilities
- 21" depth for easier attic access
- DecaBDE-free thermoplastic drain pan with secondary drain connections
- Screw-less sides and back helps to reduce condensation when installed in humid locations
- Foil-faced insulation covers the internal casing to reduce cabinet condensation
- Galvanized, leather grain-embossed finish
- Glue-less cabinet insulation retention
- Tool-less filter access



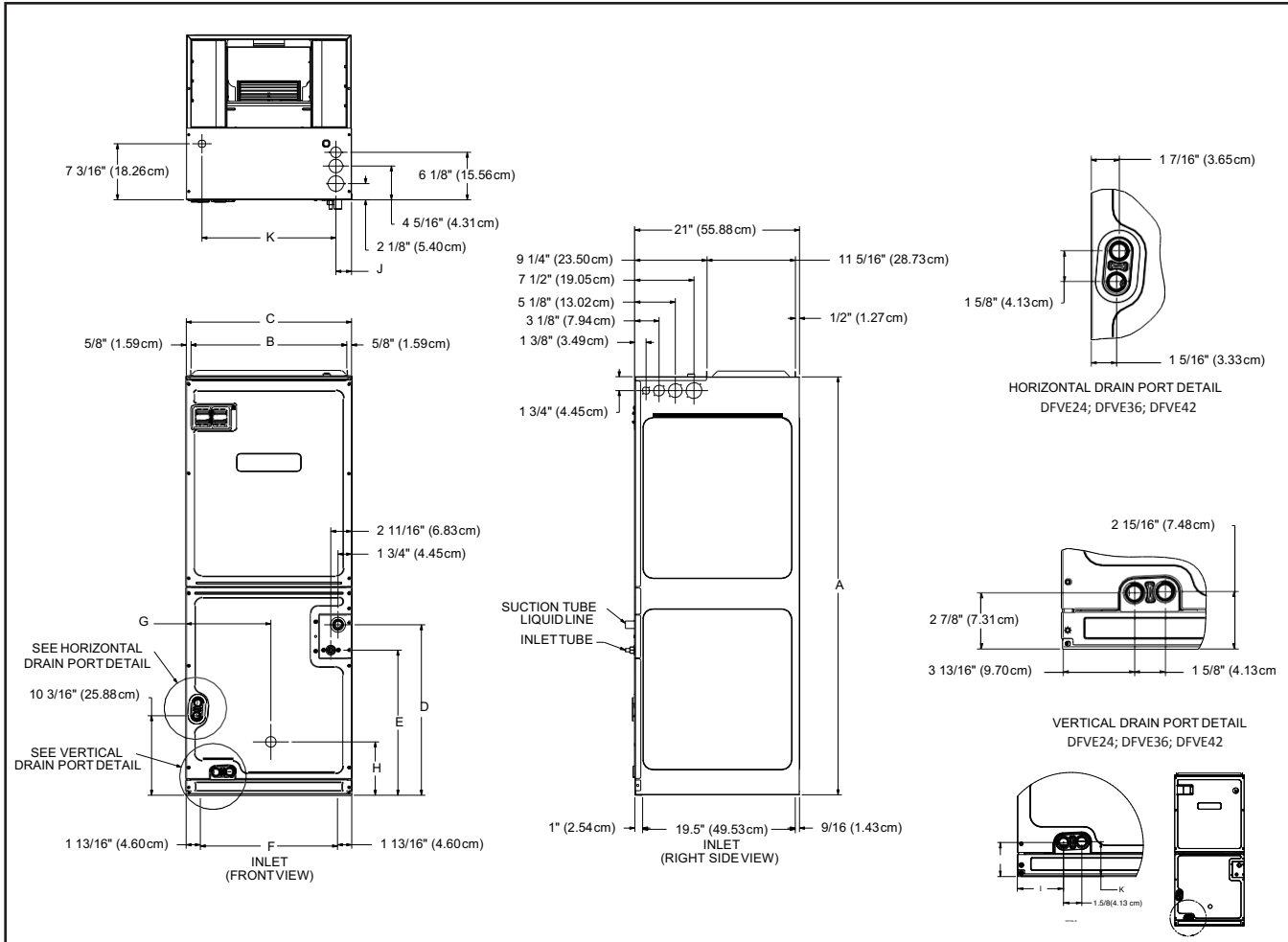
\* Complete warranty details available from your local dealer or at [www.daikincomfort.com](http://www.daikincomfort.com). To receive the 12-Year Parts Limited Warranty, online registration must be completed within 60 days of installation. Additional requirements for annual maintenance are required for the Unit Replacement Limited Warranty. Online registration and some of the additional requirements are not required in California or Québec. The duration of warranty coverage in Texas and Florida differs in some cases.

NOMENCLATURE



MODEL	DFVE24 BP1400	DFVE36 CP1400	DFVE42 CP1400	DFVE48 DP1400	DFVE60 DP1400
<b>NOMINAL TONS</b>	<b>2.0 Ton</b>	<b>3.0 Ton</b>	<b>3.5 Ton</b>	<b>4.0 Ton</b>	<b>5.0 Ton</b>
<b>BLOWER</b>					
Diameter	9½"	10 ⅝"	10 ⅝"	12"	12"
Width	6"	10 ⅝"	10 ⅝"	10 ⅝"	10 ⅝"
<b>TUBING CONNECTION</b>					
Liquid - Refrigerant	⅜"	⅜"	⅜"	⅜"	⅜"
Suction - Refrigerant	¾"	⅞"	⅞"	⅞"	⅞"
Coil Drain Connection (NPT)	¾"	¾"	¾"	¾"	¾"
<b>ELECTRICAL DATA</b>					
Voltage - Phase	208/230-1	208/230-1	208/230-1	208/230-1	208/230-1
Min Circuit Ampacity	4.9/4.9	6.5/6.5	6.5/6.5	6.5/6.5	6.5/6.5
Max. Overcurrent Device (amps)	15/15	15/15	15/15	15/15	15/15
Minimum VAC	197	197	197	197	197
Maximum VAC	253	253	253	253	253
<b>Blower Motor</b>					
FLA	3.9	5.2	5.2	5.2	5.2
HP	½	¾	¾	¾	¾
<b>SHIP WEIGHT (LBS.)</b>	115	140	140	150	167

**DIMENSIONS**



MODEL	A	B	C	D	E	F	G	H	I	J	K
DFVE24BP1400	45	16 <sup>3</sup> / <sub>8</sub>	17 <sup>1</sup> / <sub>2</sub>	15 <sup>5</sup> / <sub>8</sub>	12	14 <sup>3</sup> / <sub>8</sub>	9	12 <sup>3</sup> / <sub>4</sub>	3 <sup>13</sup> / <sub>16</sub>	2 <sup>7</sup> / <sub>8</sub>	2 <sup>15</sup> / <sub>16</sub>
DFVE36CP1400	53 <sup>7</sup> / <sub>16</sub>	19 <sup>7</sup> / <sub>8</sub>	21	21 <sup>13</sup> / <sub>16</sub>	18 <sup>5</sup> / <sub>8</sub>	17 <sup>11</sup> / <sub>16</sub>	10 <sup>13</sup> / <sub>16</sub>	6 <sup>13</sup> / <sub>16</sub>	3 <sup>13</sup> / <sub>16</sub>	2 <sup>7</sup> / <sub>8</sub>	2 <sup>15</sup> / <sub>16</sub>
DFVE42CP1400	53 <sup>7</sup> / <sub>16</sub>	19 <sup>7</sup> / <sub>8</sub>	21	21 <sup>13</sup> / <sub>16</sub>	18 <sup>5</sup> / <sub>8</sub>	17 <sup>11</sup> / <sub>16</sub>	10 <sup>13</sup> / <sub>16</sub>	6 <sup>13</sup> / <sub>16</sub>	3 <sup>13</sup> / <sub>16</sub>	2 <sup>7</sup> / <sub>8</sub>	2 <sup>15</sup> / <sub>16</sub>
DFVE48DP1400	53 <sup>7</sup> / <sub>16</sub>	23 <sup>5</sup> / <sub>16</sub>	24 <sup>1</sup> / <sub>2</sub>	21 <sup>1</sup> / <sub>2</sub>	18 <sup>5</sup> / <sub>16</sub>	21 <sup>3</sup> / <sub>16</sub>	12 <sup>3</sup> / <sub>4</sub>	6 <sup>7</sup> / <sub>8</sub>	4	3	3 <sup>3</sup> / <sub>32</sub>
DFVE60DP1400	58	23 <sup>5</sup> / <sub>16</sub>	24 <sup>1</sup> / <sub>2</sub>	26 <sup>5</sup> / <sub>8</sub>	22 <sup>5</sup> / <sub>8</sub>	21 <sup>3</sup> / <sub>16</sub>	12 <sup>5</sup> / <sub>16</sub>	13 <sup>3</sup> / <sub>4</sub>	4	3	3 <sup>3</sup> / <sub>32</sub>

**RATED INDOOR AIRFLOW RATE [SCFM]**

ID UNIT	OD UNIT	STATIC PRESSURE [wc]								
		0.1	0.2	0.3	0.4	0.5	0.6	0.7	0.8	0.9
DFVE24BP1400	DZ6VSA1810A*/DX6VS*181*A*	610	610	610	610	610	610	610	610	610
	DZ6VSA2410A*/DX6VS*241*A*	800	800	800	800	800	800	800	800	800
DFVE36CP1400	DZ6VSA3010A*/DX6VS*301*A*	1010	1010	1010	1010	1010	1010	1010	1010	1010
	DZ6VSA3610A*/DX6VSS3610A*	1260	1260	1260	1260	1260	1260	1260	1260	1260
DFVE42CP1400	DZ6VSA3610A*/DX6VS*361*A*	1260	1260	1260	1260	1260	1260	1260	1260	1260
	DZ6VSA4210A*/DX6VSS4210A*	1320	1320	1320	1320	1320	1320	1320	1320	1320
DFVE48DP1400	DZ6VSA4210A*/DX6VSS4210A*	1320	1320	1320	1320	1320	1320	1320	1320	1320
	DZ6VSA4810A*/DX6VSS4810A*	1380	1380	1380	1380	1380	1380	1380	1380	1380
DFVE60DP1400	DZ6VSA4210A*/DX6VSS4210A*	1320	1320	1320	1320	1320	1320	1320	1320	1320
	DZ6VSA4810A*/DX6VSS4810A*	1380	1380	1380	1380	1380	1380	1380	1380	1380
	DZ6VSA6010A*/DX6VSS6010A*	1640	1640	1640	1640	1640	1640	1640	1640	1640

\*The chart is for information only. For satisfactory operation, external static pressure must not exceed 0.5 wc.

\*Unit may provide different SCFM during electrical heater operation. See IO manual for the airflow rate.

MODELS	CIRCUIT 1 (208V/240V)			CIRCUIT 2 (208V/240V)			SINGLE-POINT KIT (208V/240V)	
	HEATER AMPS	MCA <sup>1</sup>	MOP <sup>2</sup>	HEATER AMPS	MCA <sup>1</sup>	MOP <sup>2</sup>	MCA <sup>1</sup>	MOP <sup>2</sup>
<b>DFVE24BP1400BA</b>	0.0/0.0	4.9/4.9	15/15	---	---	---	---	---
HKTSN03X1	10.8/12.5	18/21	20/25	---	---	---	---	---
HKTS*05X1	17.3/20.0	27/29.9	30/30	---	---	---	---	---
HKTSN06X1	21.7/25	32/36.1	35/40	---	---	---	---	---
HKTS*08X1	28.9/33.3	41/46.5	45/50	---	---	---	---	---
HKTS*10X1	34.7/40.0	48/54.9	50/60	---	---	---	---	---
<b>DFVE36CP1400BA</b>	0.0/0.0	6.5/6.5	15/15	---	---	---	---	---
HKTS*05X1	17.3/20.0	28/32	30/35	---	---	---	---	---
HKTSN06X1	21.7/25.0	34/38	35/40	---	---	---	---	---
HKTS*08X1	28.9/33.3	43/48	45/50	---	---	---	---	---
HKTS*10X1	34.7/40.0	50/57	50/60	---	---	---	---	---
HKTS*15X3 ^	0/0	6.5/6.5	15/15	30/34.6	37.5/43	40/45	---	---
HKTSN15XA/B	34.7/40	49.8/56.5	50/60	17.3/20	21.7/25	25/25	71.5/81.5	80/90
HKTSN19CA/B	34.7/40	49.8/56.5	50/60	34.7/40	43.3/50	45/50	93.2/107	100/110
<b>DFVE42CP1400BA</b>	0.0/0.0	6.5/6.5	15/15	---	---	---	---	---
HKTS*05X1	17.3/20.0	28/32	30/35	---	---	---	---	---
HKTSN06X1	21.7/25.0	34/38	35/40	---	---	---	---	---
HKTS*08X1	28.9/33.3	43/48	45/50	---	---	---	---	---
HKTS*10X1	34.7/40.0	50/57	50/60	---	---	---	---	---
HKTS*15X3 ^	0/0	6.5/6.5	15/15	30/34.6	37.5/43	40/45	---	---
HKTSN15XA/B	34.7/40	49.8/56.5	50/60	17.3/20	21.7/25	25/25	71.5/81.5	80/90
HKTSN19CA/B	34.7/40	49.8/56.5	50/60	34.7/40	43.3/50	45/50	93.2/107	100/110
<b>DFVE48DP1400BA</b>	0.0/0.0	6.5/6.5	15/15	---	---	---	---	---
HKTS*05X1	17.3/20.0	28/32	30/35	---	---	---	---	---
HKTSN06X1	21.7/25.0	34/38	35/40	---	---	---	---	---
HKTS*08X1	28.9/33.3	43/48	45/50	---	---	---	---	---
HKTS*10X1	34.7/40.0	50/57	50/60	---	---	---	---	---
HKTS*15X3 ^	0/0	6.5/6.5	15/15	30/34.6	37.5/43	40/45	---	---
HKTSN15XA/B	34.7/40	49.8/56.5	50/60	17.3/20	21.7/25	25/25	71.5/81.5	80/90
HKTS*20X3 ^	0/0	6.5/6.5	15/15	37.5/43.3	47/54	50/60	---	---
HKTSN20DA/B	34.7/40	49.8/56.5	50/60	34.7/40	43.3/50	45/50	93.2/107	100/110
<b>DFVE60DP1400BA</b>	0.0/0.0	6.5/6.5	15/15	---	---	---	---	---
HKTS*05X1	17.3/20.0	28/31.5	30/35	---	---	---	---	---
HKTSN06X1	21.7/25.0	34/37.8	35/40	---	---	---	---	---
HKTS*08X1	28.9/33.4	43/48.2	45/50	---	---	---	---	---
HKTS*10X1	34.7/40.0	49.8/57	50/60	---	---	---	---	---
HKTSN15XA/B	34.7/40	49.8/57	50/60	17.4/20	21.7/25	25/25	71.5/81.5	80/90
HKTSN20DA/B	34.7/40	49.8/57	50/60	34.7/40	43.3/50	45/50	93.2/107	100/110
HKTSN25DA/B	52/60	72/81.5	80/90	35/40	43.3/50	45/50	115/132	125/150

<sup>1</sup> Minimum Circuit Ampacity (Heater Amps + Motor Amps) X 1.25

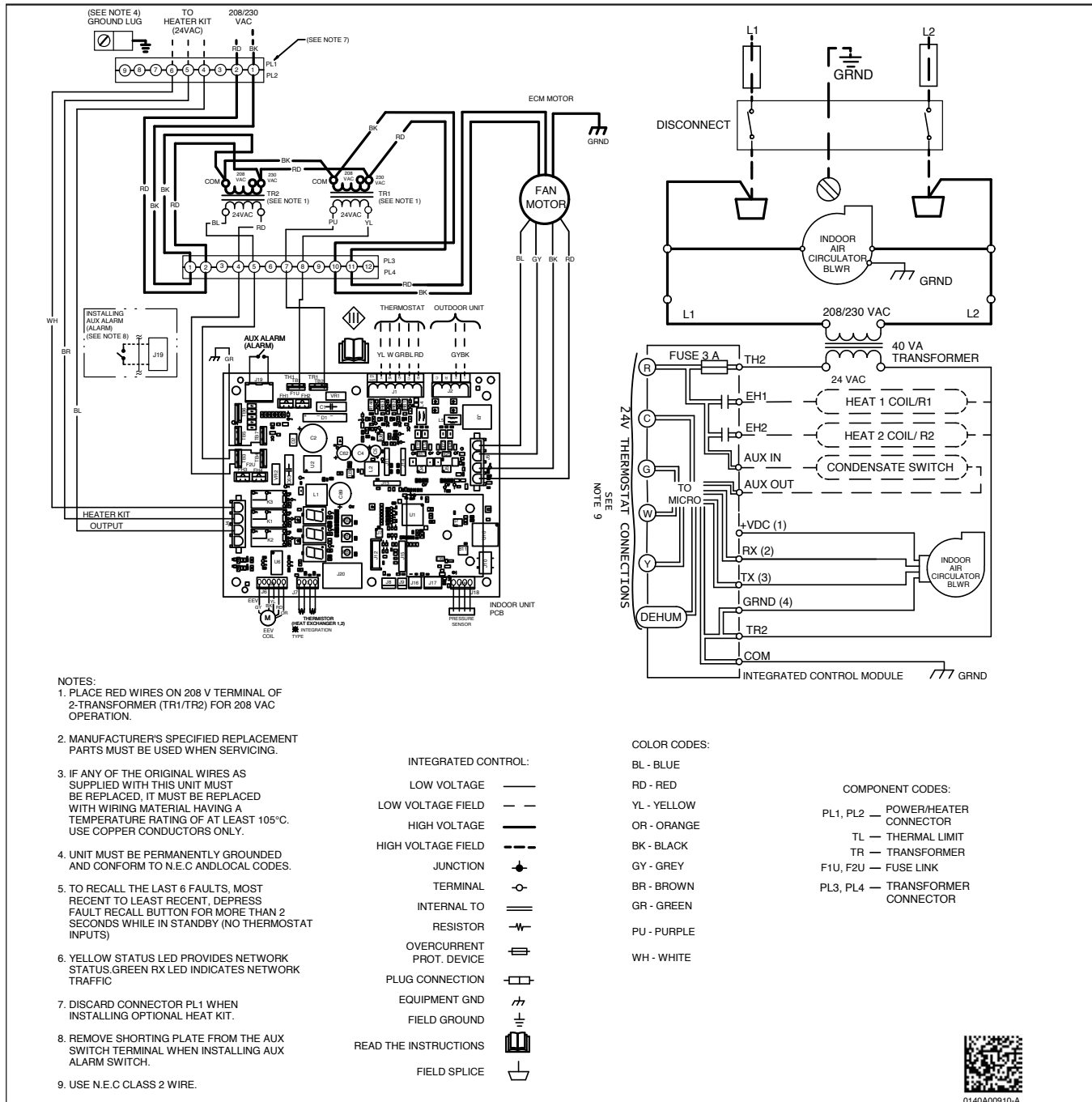
<sup>2</sup> Maximum Overcurrent Protection = 2.25 X Motor Amps + Heater Amps

^ Three-phase Heater Kits (Circuit 1: Single-phase for Air Handlers Circuit 2: Three-phase for Heater Kits)

\* D - Service disconnect, N - No service disconnect

--- indicates Not Required

# WIRING DIAGRAM



Wiring is subject to change. Always refer to the wiring diagram on the unit for the most up-to-date wiring.

**WARNING**

**High Voltage:** Disconnect all power before servicing or installing this unit. Multiple power sources may be present. Failure to do so may cause property damage, personal injury, or death.

**DOWNFLOW KIT**

DFKE-02
DFVE24BP1400
DFVE36CP1400
DFVE42CP1400
DFVE48DP1400
DFVE60DP1400

**CONDENSATE MANAGEMENT KITS\***

CMK0015	CMK0016	CMK0017
DFVE24BP1400	DFVE36CP1400	DFVE60DP1400
	DFVE42CP1400	
	DFVE48DP1400	

\*For Horizontal application only.

**HIGH HUMIDITY KITS**

HHK0001	HHK0002	HHK0003
DFVE24BP1400	DFVE36CP1400	DFVE60DP1400
	DFVE42CP1400	DFVE48DP1400

**MERV 15 AIR CLEANERS**

CHASSIS	DAIKIN PREMIUM AIR CLEANER	FILTER SIZE	REPLACEMENT FILTER PART #
B	DV15-2117-AB	21"x17"	0160M00013
C	DV15-2121-AC	21"x21"	0160M00014
D	DV15-2124-AD	21"x24"	0160M00015

**PERMANENT 1" FILTERS**

CHASSIS	PART#	SIZE
B	ALFH16201E	16.0" x 20.0"
C	ALFH1912201E	19.5" x 20.0"
D	ALFH20231E	23.0" x 20.0"

**SINGLE POINT WIRING KITS (SPW-01)**

HEATER KIT MODEL	SPWK-B	SPWK-C	SPWK-D
HKTSD15XA			DFVE48DP1400**
HKTSD15XB		DFVE36CP1400**	DFVE60DP1400**
HKTSD19CA		DFVE42CP1400**	
HKTSD19CB			
HKTSD20DA			DFVE48DP1400**
HKTSD20DB			DFVE60DP1400**
HKTSD25DA			
HKTSD25DB			DFVE60DP1400**

