

DUCTLESS SYSTEMS PRODUCT CATALOG

**DOING WHATEVER IT TAKES FOR
GREATER IN-HOME COMFORT**

Fall 2023

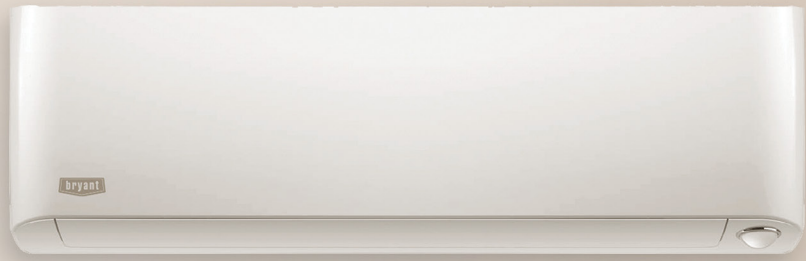




TABLE OF CONTENTS

What Is Ductless Technology	5
Ductless Features & Benefits	6
Bryant Ductless Unit Types & Performance Tiers	10
Why Bryant Ductless Systems	12
SINGLE ZONE RESIDENTIAL	14
Evolution™ System	16
Preferred™ Series	20
Legacy™ Line	40
MULTI-ZONE RESIDENTIAL	48
Ductless	50
VRF	54
LIGHT COMMERCIAL	58
Products	60
Horizontal Discharge	74







Whatever the Challenge or Need, **Ductless Technology Is the Solution**

Often called “mini-splits,” ductless systems use the same process for heating and cooling as traditional systems. But instead of delivering hot or cool air to an entire home (through ducts and vents), each ductless unit blows air directly into a single room. This means your customers get greater control over individual spaces, as well as improved energy efficiency and sustainability.

Bryant® ductless systems use inverter technology, which continually adjusts the compressor speed as conditions change for consistent temperatures and lower energy usage. Boasting a noise rating as low as 52.5 dB(A), Bryant ductless systems operate as quietly as a dishwasher. Plus, homeowners can enjoy year-round comfort with a system that performs in even the harshest of conditions—including 100% heating capacity down to -22° F.

When it comes to solving your customers' greatest challenges, innovative Bryant ductless technology is **the perfect solution.**



HELPING BREATHE NEW LIFE INTO SPACES— NEW & OLD

No ducts? No sweat.

In fact, championing customer HVAC needs is much easier when ductwork is eliminated. Whatever the need, whatever the application, Bryant ductless systems have more of the features your customers want—and less of what they don't.

IMPROVED COMFORT



Smart & Convenient Control

Wi-Fi® connectivity for control from anywhere¹—plus smart features, like integrated sensors that can direct airflow toward the people in the room and integration with third-party thermostats.



Cost Savings

No ductwork or invasive installations, combined with exceptional energy savings, make ductless systems an affordable HVAC option.



Reliability

Every Bryant system comes with a 10-year limited warranty and a 10-year compressor limited warranty.



Cleaner, Fresher Spaces

Removable, washable air filters inside each unit help prevent airborne particles from recirculating in the space. Plus, our top-of-the-line systems allow users to precisely control humidity levels, so rooms never feel too damp or too dry.



Single & Multi-Zone Capabilities

Single and multi-zone outdoor units help provide the desired indoor comfort level in a single space, or across many different rooms.

GREATER SUSTAINABILITY



Energy Efficiency

Ductless systems only use power when it's needed, reducing energy consumption and keeping costs down in tandem.



More Sustainable Homes

With the greater efficiency and better air quality of ductless, your customers can achieve sustainable home goals.

¹ Not all products are Wi-Fi® enabled.

The Ultimate in Efficiency & Performance

SEER2 (Seasonal Energy Efficiency Ratio)

SEER2 measures the cooling efficiency of a system. The higher the SEER2, the less energy needed to cool your home. Bryant systems have a SEER2 rating of up to 28.5.

HSPF2 (Heating Seasonal Performance Factor)

HSPF2 is how the heating efficiency of the system is measured. Just like SEER2, the **higher the HSPF2 number, the more efficient the heat pump.** Bryant systems have an up to 18.0 HSPF2 rating.

EER2 (Energy Efficiency)

Most Bryant ductless systems are **ENERGY STAR® certified**, qualifying for federal and state rebates where available and applicable. Visit the [Bryant Rebate Center](#) to see eligible products and incentives for your area.

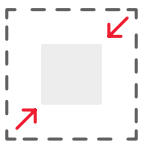


IMPROVED APPLICATION FLEXIBILITY



Renovations & Expansions

The flexibility of ductless systems means they can be easily integrated into new architecture without having to accommodate for additional space between walls and ceilings. When converting an existing area that may not be connected to the central HVAC system into a new living space (i.e., a basement, attic or garage), ductless is a simple, cost-effective solution for providing comfort year-round.



Single & Multi-Family Use

With compact designs and multi-zone capabilities, Bryant ductless systems are perfect for a range of housing applications and family needs.



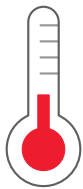
Mixed-Use & Light Commercial

Ductless systems can deliver individualized temperature control across multiple rooms—making them the ideal choice for applications like assisted living facilities, strip malls, hotels and more.



Easy Installation

Installation is quick, non-intrusive and minimally disruptive. With no added wiring or ductwork needed, systems can be installed in just hours.



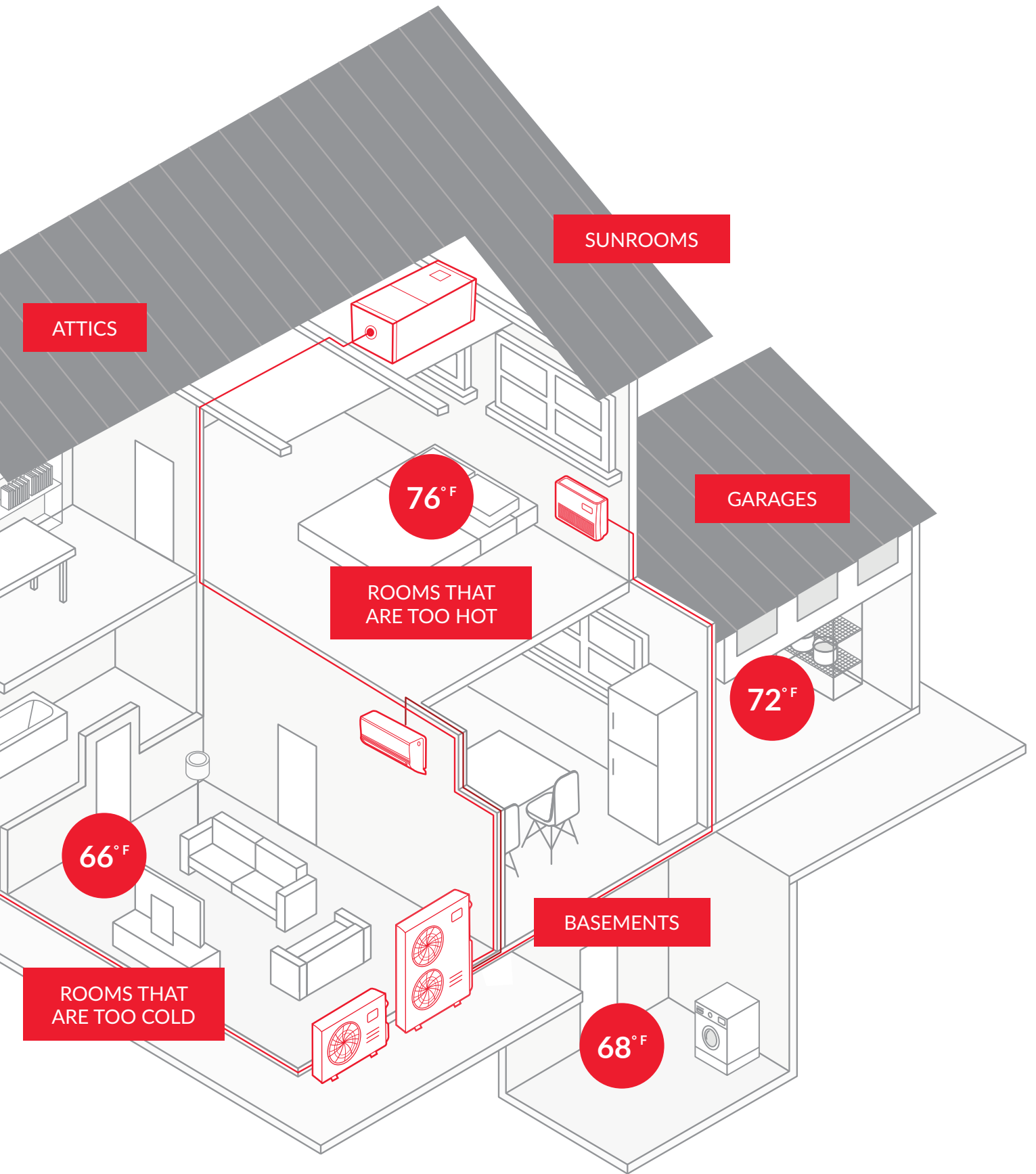
Consistent Temperatures

Ductless can help homeowners target areas with hot and cold spots for more consistent temperatures and comfort across spaces.



HOME ADDITIONS

RENOVATIONS

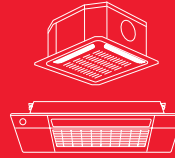


Versatile Units for Mix & Match Configurations

Bryant ductless systems offer a variety of indoor and outdoor unit sizes and styles. So you can mix and match to create the best solution for your residential and light commercial customers. Whatever the challenge, Bryant ductless units meet virtually any application and installation need.



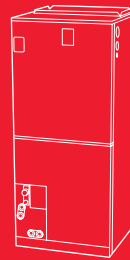
The high wall
is easily and quickly
mounted directly to
the wall



The cassette
can be mounted
directly in the ceiling



The console
mounts near the floor
or ceiling with a slim,
discrete profile



**The multi-poise
air handler**
uses existing ductwork to
seamlessly replace traditional
systems and furnaces



The ducted
is a great example of a unit
that's hidden from view
(if ceiling space allows)



Experience the best of comfort and design flexibility with the new Bryant one-way cassette. This versatile unit can be incorporated into a single or multi-zone system and easily installed nearly anywhere in the home or office with no modifications to existing framing.

The latest addition to the Bryant ductless series, the one-way cassette is the ideal choice for homeowners seeking an exceptionally efficient, whisper-quiet and stylish system that provides dependable comfort in all climates.

Tiered **Performance.** Greater **Inventory Control.**

Not only can you bring together different ductless unit styles, but you can also build unique combinations across Bryant performance tiers. This gives you more freedom and flexibility to do whatever it takes for your customers—while still controlling inventory.

EVOLUTION™ SYSTEM

Evolution™ System

Our most energy-efficient options for delivering comfort. The Evolution System is ENERGY STAR® certified, delivering up to 28.5 SEER2 and up to 18.0 HSPF2.

PREFERRED™ SERIES

Preferred™ Series

These units deliver up to 28.1 SEER2 and up to 13.6 HSPF2 ratings. Multi-zone Preferred Series systems can connect up to five indoor units in separate spaces. And the single zone systems provide optimal performance when outdoor temperatures are low.

LEGACY™ LINE

Legacy™ Line

The perfect balance between comfort, flexibility and affordability. Legacy Line ductless systems provide users with calming comfort and ultra-quiet operation (as low as 27 dB(A)). What's more, the Legacy Line offers cost-effective performance with ratings as high as 21.7 SEER2 and 9.4 HSPF2.

BRYANT HEATING & COOLING DOES WHATEVER IT TAKES®

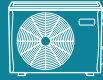
Since 1904, Bryant has been dedicated to improving in-home comfort through innovative HVAC systems. From developing the 80% efficiency boiler to consistently adapting and advancing technologies, we have a history of providing a variety of solutions that meet a range of homeowner needs. Our commitment to helping our dealers succeed in the field is steadfast—and **our products are unmatched in quality, durability and reliability.**

With more than 100 years of experience, we know how to position you to exceed expectations and delight customers. Because it's not just about delivering great products but having the knowledge and experience to build trust and foster relationships.

Bryant dealers embody the company's spirit, doing whatever it takes to uphold the reputation our founder, Charles Bryant, established all those years ago. Homeowners can rest easy, knowing their systems will receive the attention and care that only Bryant dealers can provide.

SINGLE ZONE SYSTEMS				
Model	Size	SEER2	HSPF2	Page
Evolution™ System				
38MPRB Outdoor Unit	09 / 12 / 18	Up to 28.5	Up to 18.0	16
619PHB High Wall	09 / 12 / 18			18
Preferred™ Series				
38MARB Outdoor Unit	06 / 09 / 12 / 18 / 24 / 30 / 36	Up to 28.1	Up to 13.6	20
619AHB High Wall	06 / 09 / 12 / 18 / 24 / 30 / 36			24
40MCCAQ One-Way Cassette	06 / 09 OR 12 / 18			26
40MBCQ Cassette	09 / 12 / 18			28
40MBCAQ Cassette	24			30
40MBDQ Ducted	09 / 12 / 18 / 24			32
40MBDAQ High Static Slim Ducted	09 / 12 / 18 / 24			34
40MBAB Air Handler	18 / 24 / 30 / 36			36
40MBFAQ Floor Console	12			38
40MBFQ Console	18 / 24			38
Legacy™ Line				
38MHR Outdoor Unit		Up to 21.7	Up to 9.4	40
Cooling Only - 38MHRDC	09 / 12 / 18 / 24			41
Heat Pump - 38MHRCQ	09 / 12 / 18 / 24 / 30 / 36			43
40MHHA High Wall				44
Cooling Only - 40MHHAC	09 / 12 / 18 / 24			45
Heat Pump - 40MHHAQ	09 / 12 / 18 / 24 / 30 / 36			46
MULTI-ZONE SYSTEMS				
Model	Size	SEER2	HSPF2	Page
Preferred™ Series DLS				
38MGRB & 38MGHB Outdoor Unit	18 / 24HH / 30HH / 36 / 36HH / 48 / 48HH	Up to 26.0	Up to 10.5	50
VRF				
38VMB-H Outdoor Unit	36 / 48 / 60	Up to 19.2	Up to 9.2	56
LIGHT COMMERCIAL				
Model	Size	SEER2	HSPF2	Page
Preferred™ Series				
38MBRC Outdoor Unit	36 / 48 / 58	Up to 19.8	Up to 10.2	60
40MBCAQ Cassette	36 / 48			64
40MBDQ Ducted	36 / 48 / 58			66
40MBDAQ High Static Slim Ducted	36 / 48 / 58			68
40MBFQ Console	36 / 48 / 58			70
40MBAB Air Handler	36 / 48 / 60			72
38MURA Outdoor Unit & 40MUAA Air Handler	18 / 24 / 30 / 36 / 48 / 60	Up to 18.0	Up to 10.0	74
315SA Outdoor Unit Cooling Only	18 / 24 / 30 / 36 / 48 / 60	Up to 17.1		78
24V Interface Kit				80
Controls				82
Glossary of Terms				83

SINGLE ZONE RESIDENTIAL



38MPRB Outdoor Unit

Up to 28.5 SEER2
Up to 18.0 HSPF2
Sizes: 09 / 12 / 18



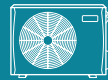
619PHB High Wall

Sizes: 09 / 12



619PHB High Wall

Size: 18



38MARB Outdoor Unit

Up to 28.1 SEER2
Up to 13.6 HSPF2
Sizes: 06 / 09 / 12 / 18 / 24 / 30 / 36



619AHB High Wall

Sizes: 06 / 09 / 12 / 18 / 24 / 30 / 36



40MCCAQ One-Way Cassette

Sizes: 06 / 09 OR 12 / 18



40MBCQ Cassette

Sizes: 09 / 12 / 18



40MBCAQ Cassette

Size: 24



40MBDQ Ducted

Sizes: 09 / 12 / 18 / 24



40MBDAQ High Static Slim Ducted

Sizes: 09 / 12 / 18 / 24



40MBAB Air Handler

Sizes: 18 / 24 / 30 / 36



40MBFAQ Floor Console

Size: 12



40MBFQ Console

Sizes: 18 / 24



38MHRDC & 38MHRCQ Outdoor Unit

Up to 21.7 SEER2
Up to 9.4 HSPF2
Sizes: 09 / 12 / 18 / 24 / 30 / 36

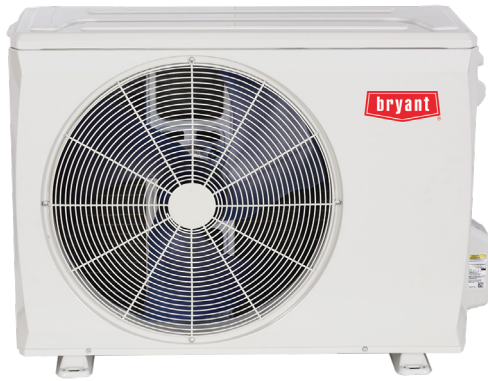


40MHAC & 40MHHAQ High Wall

Sizes: 09 / 12 / 18 / 24 / 30 / 36

38MPRB Outdoor Unit

Evolution System



FEATURES

- 100% Heating capacity at 0° F (-17° C) without wind baffles
- 100% Cooling capacity at -22° F (-30° C)
- Available in 208/230V
- Built-in basepan heater
- Auto-restart function
- Refrigerant leakage detection
- Quiet outdoor operation
- Anti-corrosive fin coating
- Piping length up to 164 ft (50m)
- Cooling operating range: -22° ~ 122° F (-30° ~ 50° C)
- Heating operating range: -22° ~ 75° F (-25° ~ 24° C)

COMPATIBLE WITH

- 619PHB High Wall (p 18)

EVOLUTION™
SYSTEM

Heat Pump with Basepan Heater

Inverter Compressor

Up to 28.5 SEER2

Up to 18.0 HSPF2

Sizes: 09 / 12 / 18

All systems are ENERGY STAR® certified based on indoor unit pairings



If maximum performance and efficiency are key, look no further than our Evolution System heat pump. This ENERGY STAR® certified ductless system comes with a 28.5 SEER2 rating when paired with the 619PHB high wall. Even when temps drop to as low as -22° F outside, your interior environment stays cozy (when properly sized and matched with specific indoor units). Powerful yet quiet, our best ductless outdoor solution delivers results.

KEY FEATURES

Unrivaled Efficiency

With a SEER2 rating of up to 28.5 and a cooling operating range of -22° F to 122° F, this outdoor unit offers first-rate efficiency without compromising performance.

Virtually Silent Operation

Enjoy a more peaceful outdoor experience with a unit that's nearly silent—operating at as low as 54.0 dB(A).

SPECIFICATIONS:

38MPRB Outdoor Unit				
Heat Pump System				
Size		9	12	18
Outdoor Model		38MPRBQ09AA3	38MPRBQ12AA3	38MPRBQ18AA3
Electrical				
Voltage, Phase, Cycle	V-Ph-Hz	208/230-1-60	208/230-1-60	208/230-1-60
MCA	A.	16	16	25
Recommended Fuse Rating	A.	20	20	30
MOCP - Fuse Rating	A.	20	20	35
Operating Range				
Cooling Outdoor DB Min - Max	° F (° C)	-22~122 (-30~50)	-22~122 (-30~50)	-22~122 (-30~50)
Heating Outdoor DB Min - Max	° F (° C)	-22~75 (-30~24)	-22~75 (-30~24)	-22~75 (-30~24)
Piping				
Total Piping Length	ft (m)	82 (25)	82 (25)	164 (50)
Piping Lift*	ft (m)	32.8 (10)	32.8 (10)	82 (25)
Pipe Connection Size - Liquid	in (mm)	1/4 (6.35)	1/4 (6.35)	3/8 (9.52)
Pipe Connection Size - Suction	in (mm)	1/2 (12.7)	1/2 (12.7)	5/8 (15.9)
Refrigerant				
Type		R410A	R410A	R410A
Charge	lbs (kg)	3.31 (1.5)	3.31 (1.5)	5.73 (2.6)
Outdoor				
Unit Width	in (mm)	35.04 (890)	35.04 (890)	37.24 (946)
Unit Height	in (mm)	26.50 (673)	26.50 (673)	31.89 (810)
Unit Depth	in (mm)	13.46 (342)	13.46 (342)	16.14 (410)
Net Weight	lbs (kg)	101.41 (46)	101.41 (46)	134.48 (61)
Airflow	CFM	1,765	1,765	2,235
Sound Pressure	dB(A)	56.5	56.5	54.0

*Condensing unit above or below indoor unit.

COMPATIBILITY:

Indoor Unit		Outdoor Unit		
		38MPRBQ09AA3	38MPRBQ12AA3	38MPRBQ18AA3
High Wall	619PHBQ09XA3	•		
	619PHBQ12XA3		•	
	619PHBQ18XA3			•

PERFORMANCE:

High Wall				
Indoor Model		619PHBQ09XA3	619PHBQ12XA3	619PHBQ18XA3
ENERGY STAR®		YES	YES	YES
Cooling System Tons		0.75	1	1.5
Cooling Rated Capacity	Btu/h	9,000	12,000	18,000
Cooling Cap. Range Min - Max	Btu/h	2,800~16,900	2,800~16,900	6,900~27,000
SEER2		28.5	27.0	26.3
EER2		16.0	14.0	15.3
Heating Rated Capacity (47° F)	Btu/h	12,000	12,000	20,000
Heating Rated Capacity (17° F)	Btu/h	6,900	6,900	11,000
Heating Maximum Capacity (17° F)	Btu/h	18,100	18,100	11,300
Heating Maximum Capacity (5° F)	Btu/h	13,900	13,900	25,400
Heating Cap. Range Min - Max	Btu/h	5,100~19,000	5,100~19,000	9,900~31,000
HSPF2		18.0	12.0	15.5
COP (47° F)	W/W	3.84	3.84	4.30
COP (17° F)	W/W	2.89	2.89	2.80
COP (5° F)	W/W	2.00	2.00	2.00

Manufacturer reserves the right to discontinue, or change at any time, specification or designs without notice or incurring obligations.



FEATURES

- Modes: Cool, Heat, Dry, Fan, Auto
- Four Fan speeds including Turbo mode
- Carbon Filter
- Sleep Mode
- Relative Humidity Sensor
- Intelligent Eye (Occupancy Sensor)
- ECO Mode
- Up-Down / Right-Left louver control (fixed or swing)
- *Follow Me* (senses temperature at handheld remote)
- NEW drop-down motor feature (18K only)
- Heating setback (46° F Heating Mode)
- Quiet indoor operation
- Anti-corrosive fin coating

COMPATIBLE WITH

- 38MPRB Outdoor Unit
Single Zone (p 16)
- 38MGRB & 38MGHB
Outdoor Unit Multi-Zone (p 50)

EVOLUTION™
SYSTEM

Sizes: 09 / 12 / 18

All Systems are ENERGY STAR® certified based on outdoor unit pairings



KEY FEATURES

Superior Comfort

With innovative features, like the Occupancy Sensor, airflow is directed toward or away from anyone in the room.

Top Tier Performance

Get the most out of a flexible, energy efficient unit with best-in-class performance and ultimate efficiency.

CONTROLS

Wi-Fi® kit included with indoor unit

Wireless Remote Controller included with indoor unit

Optional Wired Remote Controller KSACN0601AAA (7-Day Programmable) Sizes 09 / 12

Optional Wired Remote Controller KSACN0801AAA (7-Day Programmable) Size 18



Wireless Remote Controller



Optional Wired Controller (7-Day Programmable) KSACN0601AAA & KSACN0801AAA

SPECIFICATIONS:

619PHB High Wall				
Heat Pump				
System				
Size		9K	12K	18K
Indoor Model		619PHBQ09XA3	619PHBQ12XA3	619PHBQ18XA3
Electrical				
Voltage-Phase-Cycle	V/Ph/Hz	208/230-1-60	208/230-1-60	208/230-1-60
Power Supply		Indoor Unit Powered From Outdoor Unit		
MCA	A.	0.3	0.3	0.625
Operating Range				
Cooling Indoor DB Min - Max	° F (° C)	62~90 (17~32)	62~90 (17~32)	63~90 (17~32)
Heating Indoor DB Min - Max	° F (° C)	32~86 (0~30)	32~86 (0~30)	32~86 (0~30)
Piping				
Pipe Connection Size - Liquid	in (mm)	1/4 (6.35)	1/4 (6.35)	3/8 (9.52)
Pipe Connection Size - Suction	in (mm)	3/8 (9.52)	1/2 (12.7)	5/8 (16)
Indoor				
Unit Width (W)	in (mm)	35.2 (895)	35.2 (895)	44.88 (1140)
Unit Height (H)	in (mm)	11.7 (298)	11.7 (298)	14.57 (370)
Unit Depth (D)	in (mm)	9.8 (248)	9.8 (248)	10.83 (275)
Net Weight	lbs (kg)	28.66 (13)	28.66 (13)	43.65 (19.8)
Number of Fan Speeds		4	4	4
Airflow (lowest to highest)	CFM	144/245/295/345	168/252/306/357	319/414/611/719
Cooling Sound Pressure (lowest to highest)	dB(A)	29/35.5/41.5/45.6	29/35.5/41.5/46.8	36.7/39.2/43.5/52.1
Heating Sound Pressure (lowest to highest)	dB(A)	30.5/36/40.5/44.5	30.5/36/40.5/46.1	36.5/38.2/44.1/52
Air Throw Data	ft (m)	21.98 (6.7)	22.97 (7)	31.5 (9.6)
Moisture Removal	Pint/h (L/h)	2.11 (1.0)	2.54 (1.2)	5.5 (2.6)
Field Drain Pipe Size O.D.	in (mm)	0.625 (16)	0.625 (16)	0.625 (16)

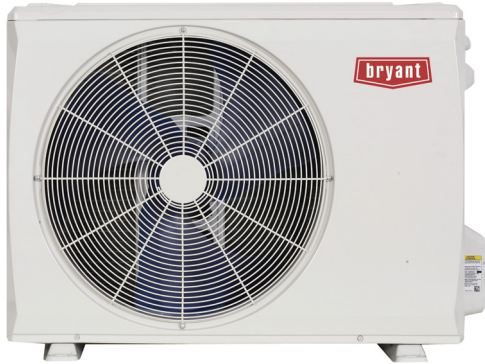
COMPATIBILITY:

Indoor Unit	619PHBQ09XA3	619PHBQ12XA3	619PHBQ18XA3
Outdoor Unit Single Zone*	38MPRBQ09AA3	38MPRBQ12AA3	38MPRBQ18AA3
	38MGRBQ18BA3	38MGRBQ18BA3	
	38MGHBQ24CA3	38MGHBQ24CA3	
	38MGHBQ30DA3	38MGHBQ30DA3	38MGHBQ30DA3
Outdoor Unit Multi-Zone*	38MGRBQ36DA3	38MGRBQ36DA3	38MGRBQ36DA3
	38MGHBQ36DA3	38MGHBQ36DA3	38MGHBQ36DA3
	38MGRBQ48EA3	38MGRBQ48EA3	38MGRBQ48EA3
	38MGHBQ48EA3	38MGHBQ48EA3	38MGHBQ48EA3

*Performance may vary based on the compatible outdoor units. See respective pages for performance data.

38MARB Outdoor Unit

Preferred Series



FEATURES

- 100% heating capacity at -4° F (-20° C)*
- Available in 208/230V (6-36K) and 115V (12K)
- Built-in basepan heater
- Auto-restart function
- Anti-corrosive fin coating
- Piping length up to 213 ft (65m)
- Cooling operating range -22° ~ 130° F (-30° ~ 55° C)
- Heating operating range -22° ~ 86° F (-25° ~ 30° C)

COMPATIBLE WITH

- 619AHB High Wall (p 24)
- 40MCCAQ One-Way Cassette (p 26)
- 40MBCQ Cassette (p 28)
- 40MBCAQ Cassette (p 30)
- 40MBDQ Ducted (p 32)
- 40MBDAQ High Static Slim Ducted (p 34)
- 40MBAB Air Handler (p 36)
- 40MBFAQ & 40MBFQ Console (p 38)

PREFERRED™
SERIES

Heat Pump with Basepan Heater

Inverter Compressor

Up to 28.1 SEER2

Up to 13.6 HSPF2

Sizes: 06 / 09 / 12 / 18 / 24 / 30 / 36
(208-230V); Size 12 (115V)

Select systems are ENERGY STAR® certified based on indoor unit pairings



KEY FEATURES

Extra Low Temperature Heating

Heat output up to 69% of rated capacity at -22° F (-30° C). So, when it's cold outside, it will be warm inside, making this a primary heat source and eliminating the need for a backup.

Rapid Cooling and Heating

After startup, the compressor quickly gets up to maximum speed, cooling or heating the room in minutes.

* For certain models.

PERFORMANCE:

619AHB High Wall									
Size		12	6	9	12	18	24	30	36
Indoor Model		619AHBQ12XA1	619AHBQ06XA3	619AHBQ09XA3	619AHBQ12XA3	619AHBQ18XA3	619AHBQ24XA3	619AHBQ30XA3	619AHBQ36XA3
ENERGY STAR®		YES	YES	YES	YES	YES	YES	NO	NO
Cooling Rated Capacity	Btu/h	12,000	6,000	9,000	12,000	18,000	24,000	30,000	36,000
Cooling Cap. Range Min - Max	Btu/h	3,500-13,200	3,400-12,000	3,300-14,300	3,300-14,300	8,900-19,400	6,850-27,000	8,900-32,600	9,300-38,800
SEER2		23.5	26.5	28.1	25.5	21.5	21.5	20.0	20.0
EER2		13.0	15.8	16.2	14	12.5	13.0	11.5	8.5
Heating Rated Capacity (47° F)	Btu/h	12,000	7,000	12,000	12,000	18,000	29,000	30,000	36,000
Heating Rated Capacity (17° F)	Btu/h	8,400	8,500	9,500	10,000	15,000	19,800	19,000	22,400
Heating Rated Capacity (5° F)	Btu/h	7,100	7,500	10,500	12,000	18,000	25,200	20,600	20,400
Heating Maximum Capacity (17° F)	Btu/h	8,500	9,000	12,000	12,000	20,270	27,200	21,200	22,500
Heating Cap. Range Min - Max	Btu/h	5,000-12,200	3,500-11,500	5,000-15,200	5,000-15,300	15,100-19,500	11,600-33,000	12,300-34,100	11,550-37,000
HSPF2		10.0	13.6	11.5	10.4	11.3	11.4	9.2	8.0
COP (47° F)	W/W	3.52	3.92	3.81	3.88	3.10	3.40	2.90	2.51
COP (17° F)	W/W	2.80	2.90	2.53	2.41	2.35	2.87	2.30	2.18
COP (5° F)	W/W	2.18	2.10	1.80	1.80	1.80	1.80	1.94	1.80

PERFORMANCE:

40MBCQ & 40MBCAQ Cassette					
Size		9	12	18	24
Indoor Model		40MBCQ09---3	40MBCQ12---3	40MBCQ18---3	40MBCAQ24---3
ENERGY STAR®		YES	YES	YES	YES
Cooling System Tons		0.75	1.00	1.33	2.00
Cooling Rated Capacity	Btu/h	9,000	12,000	16,000	24,000
Cooling Cap. Range Min - Max	Btu/h	2,850-11,100	3,000-13,700	5,600-17,000	8,000-25,000
SEER2		20.5	22.3	20.0	20.5
EER2		13.0	12.7	12.5	11.0
Heating Rated Capacity (47° F)	Btu/h	9,800	12,000	17,000	25,000
Heating Rated Capacity (17° F)	Btu/h	9,000	9,900	15,900	21,000
Heating Maximum Capacity (5° F)	Btu/h	10,000	11,300	16,000	25,800
Heating Maximum Capacity (17° F)	Btu/h	11,800	14,000	17,000	25,800
Heating Cap. Range Min - Max	Btu/h	2,250-12,500	2,000-15,300	8,700-21,000	11,800-27,000
HSPF2		10.3	10.2	9.5	11.5
COP (47° F)	W/W	3.09	3.26	2.95	3.5
COP (17° F)	W/W	1.91	2.54	2.44	2.64
COP (5° F)	W/W	1.8	1.9	1.75	2.0

40MBDQ Ducted					
Size		9	12	18	24
Indoor Model		40MBDQ09---3	40MBDQ12---3	40MBDQ18---3	40MBDQ24---3
ENERGY STAR®		YES	YES	YES	YES
Cooling System Tons		0.75	1.0	1.4	2.0
Cooling Rated Capacity	Btu/h	9,000	12,000	16,500	24,000
Cooling Cap. Range Min - Max	Btu/h	2,400-12,500	2,250-14,400	6,500-18,800	6,500-27,800
SEER2		20.2	19.5	18.0	19.2
EER2		13.2	11.7	11.7	12.0
Heating Rated Capacity (47° F)	Btu/h	10,000	12,500	19,000	25,000
Heating Rated Capacity (17° F)	Btu/h	10,100	10,600	15,000	21,000
Heating Rated Capacity (5° F)	Btu/h	10,800	12,100	17,700	27,000
Heating Maximum Capacity (17° F)	Btu/h	11,600	12,600	19,000	24,000
Heating Cap. Range Min - Max	Btu/h	1,700-15,600	1,800-16,300	8,900-22,000	12,200-32,200
HSPF2		12.0	10.0	9.5	10.5
COP (47° F)	W/W	3.37	3.56	2.93	3.30
COP (17° F)	W/W	2.40	2.50	2.27	2.64
COP (5° F)	W/W	1.90	1.96	1.85	2.00

PERFORMANCE:

40MBFAQ & 40MBFQ Console				
Size		12	18	24
Indoor Model		40MBFAQ12---3	40MBFQ18---3	40MBFQ24---3
ENERGY STAR®		YES	YES	YES
Cooling System Tons		1.0	1.42	2.0
Cooling Rated Capacity	Btu/h	12,000	17,000	24,000
Cooling Cap. Range Min - Max	Btu/h	7,600-14,400	7,800-19,900	5,400-26,800
SEER2		24.2	20.5	20.5
EER2		13.3	12.5	11.7
Heating Rated Capacity (47° F)	Btu/h	12,000	18,000	25,000
Heating Rated Capacity (17° F)	Btu/h	10,200	12,000	19,000
Heating Rated Capacity (5° F)	Btu/h	11,600	16,000	25,000
Heating Maximum Capacity (17° F)	Btu/h	12,800	17,000	28,600
Heating Cap. Range Min - Max	Btu/h	5,000-15,700	8,600-21,500	12,500-30,500
HSPF2		10.7	9.8	11.0
COP (47° F)	W/W	4.10	3.01	3.56
COP (17° F)	W/W	2.71	2.30	2.64
COP (5° F)	W/W	2.08	1.80	2.10

40MBAB Air Handler					
Size		18	24	30	36
Indoor Model		40MBABQ18XB3	40MBABQ24XB3	40MBABQ30XB3	40MBABQ36XB3
ENERGY STAR®		YES	YES	NO	NO
Cooling System Tons		1.5	1.92	2.5	3.0
Cooling Rated Capacity	Btu/h	18,000	23,000	30,000	36,000
Cooling Cap. Range Max	Btu/h	21,000	25,600	33,600	38,000
SEER2		17.6	18.4	17.5	15.4
EER2		11.7	11.7	11.2	8.2
Heating Rated Capacity (47° F)	Btu/h	19,000	26,000	30,000	38,000
Heating Rated Capacity (17° F)	Btu/h	15,400	16,900	20,500	27,000
Heating Rated Capacity (5° F)	Btu/h	17,600	23,500	20,500	20,900
Heating Maximum Capacity (17° F)	Btu/h	18,200	25,000	22,000	27,200
Heating Cap. Range Min - Max	Btu/h	9,000-21,000	5,600-29,000	12,000-32,000	9,200-43,000
HSPF2		9.6	9.3	8.4	9.0
COP (47° F)	W/W	3.39	3.50	3.52	3.10
COP (17° F)	W/W	2.70	2.39	2.40	2.53
COP (5° F)	W/W	2.00	1.94	1.90	1.79

PERFORMANCE:

40MCCAQ One-Way Cassette				
Size	6	9	12	18
Indoor Model	40MCCAQ09XA3		40MCCAQ18XA3	
ENERGY STAR®	YES	YES	YES	YES
Cooling System Tons	0.5	0.75	1.0	1.5
Cooling Rated Capacity	Btu/h 6,500	9,000	12,000	16,700
Cooling Cap. Range Min - Max	Btu/h 3,600~11,200	3,600~12,200	4,000~14,100	6,100~17,500
SEER2	22.0	24.0	23.0	19.8
EER2	14.5	13.0	13.0	12.5
Heating Rated Capacity (47° F)	Btu/h 9,700	12,000	14,800	20,000
Heating Rated Capacity (17° F)	Btu/h 5,700	9,800	9,500	12,500
Heating Rated Capacity (5° F)	Btu/h 8,000	10,500	11,000	16,700
Heating Maximum Capacity (17° F)	Btu/h 10,000	11,400	11,500	18,800
Heating Cap. Range Min - Max	Btu/h 3,700~12,500	4,800~14,000	4,600~15,000	6,450~21,500
HSPF2	10.8	12.4	10.0	11.2
COP (47° F)	W/W 3.75	3.30	3.56	3.19
COP (17° F)	W/W 2.60	2.35	2.48	2.50
COP (5° F)	W/W 2.00	1.80	1.80	1.80

40MBDAQ High Static Ducted				
Size	9	12	18	24
Indoor Model	40MBDAQ09XH3	40MBDAQ12XH3	40MBDAQ18XH3	40MBDAQ24XH3
ENERGY STAR®	YES	YES	YES	YES
Cooling System Tons	0.75	1.00	1.46	2.00
Cooling Rated Capacity	Btu/h 9,000	12,000	17,500	24,000
Cooling Cap. Range Min - Max	Btu/h 3,450~13,000	4,000~14,000	7,000~18,700	6,500~27,800
SEER2	20.5	20.0	18.0	19.2
EER2	13.6	12.0	12.1	12.0
Heating Rated Capacity (47° F)	Btu/h 9,800	12,000	19,000	25,000
Heating Rated Capacity (17° F)	Btu/h 8,600	9,700	15,700	21,000
Heating Rated Capacity (5° F)	Btu/h 10,800	12,000	18,000	24,000
Heating Maximum Capacity (17° F)	Btu/h 12,000	12,200	20,000	24,000
Heating Cap. Range Min - Max	Btu/h 4,550~14,000	3,600~15,000	5,900~23,000	12,200~32,200
HSPF2	10.0	9.5	10.8	11.1
COP (47° F)	W/W 3.46	3.35	3.71	3.30
COP (17° F)	W/W 2.30	2.58	2.60	2.75
COP (5° F)	W/W 1.90	1.85	2.20	2.00

SPECIFICATIONS:

38MARB Outdoor Unit																	
Heat Pump System																	
Size	12		6		9		12		18		24		30		36		
Outdoor Model	38MARBQ12AA1		38MARBQ06AA3		38MARBQ09AA3		38MARBQ12AA3		38MARBQ18AA3		38MARBQ24AA3		38MARBQ30AA3		38MARBQ36AA3		
Electrical																	
Voltage-Phase-Cycle	V-Ph-Hz	115-1-60		208/230-1-60		208/230-1-60		208/230-1-60		208/230-1-60		208/230-1-60		208/230-1-60			
MCA	A.	19		13		15		15		16		25		23		28	
MOCP - Fuse Rating	A.	25		15		15		15		25		35		30		35	
Operating Range																	
Cooling Outdoor DB Min - Max	° F (° C)	-22~122 (-30~50)		-22~122 (-30~50)		-22~122 (-30~50)		-22~122 (-30~50)		-22~122 (-30~50)		-22~122 (-30~50)		-22~122 (-30~50)		-22~122 (-30~50)	
Heating Outdoor DB Min - Max	° F (° C)	-22~86 (-30~30)		-22~86 (-30~30)		-22~86 (-30~30)		-22~86 (-30~30)		-22~86 (-30~30)		-22~86 (-30~30)		-22~86 (-30~30)		-22~86 (-30~30)	
Piping																	
Total Piping Length	ft (m)	82 (25)		82 (25)		82 (25)		82 (25)		98 (30)		164 (50)		164 (50)		213 (65)	
Piping Lift*	ft (m)	32 (10)		32 (10)		32 (10)		32 (10)		65 (20)		82 (25)		82 (25)		98 (30)	
Pipe Connection Size - Liquid	in (mm)	1/4 (6.35)		1/4 (6.35)		1/4 (6.35)		1/4 (6.35)		1/4 (6.35)		3/8 (9.52)		3/8 (9.52)		3/8 (9.52)	
Pipe Connection Size - Suction	in (mm)	1/2 (12.7)		3/8 (9.52)		3/8 (9.52)		1/2 (12.7)		1/2 (12.7)		5/8 (16)		5/8 (16)		5/8 (16)	
Refrigerant																	
Type		R410A		R410A		R410A		R410A		R410A		R410A		R410A		R410A	
Charge	in (mm)	2.47 (1.12)		2.38 (1.08)		2.6 (1.18)		2.6 (1.18)		4.08 (1.85)		5.73 (2.6)		6.06 (2.75)		7.50 (3.40)	
Compressor																	
Type		Rotary Inverter		Rotary Inverter		Rotary Inverter		Rotary Inverter		Rotary Inverter		Rotary Inverter		Rotary Inverter		Rotary Inverter	
Outdoor																	
Unit Width	in (mm)	30.12 (765)		30.12 (765)		31.69 (805)		31.69 (805)		35.04 (890)		37.24 (946)		37.24 (946)		37.24 (946)	
Unit Height	in (mm)	21.85 (555)		21.85 (555)		21.81 (554)		21.81 (554)		26.50 (673)		31.89 (810)		31.89 (810)		31.89 (810)	
Unit Depth	in (mm)	11.93 (303)		11.93 (303)		12.99 (330)		12.99 (330)		13.46 (342)		16.14 (410)		16.14 (410)		16.14 (410)	
Net Weight	lbs (kg)	66.80 (30.3)		63.71 (28.9)		74.07 (33.6)		73.63 (33.4)		100.97 (45.8)		134.48 (61)		141.76 (64.3)		150.13 (68.1)	
Airflow	CFM	794		1,324		1,324		1,324		1,765		2,235		2,235		2,235	
Sound Pressure	dB(A)	54.0		54.5		54.5		56.0		59.0		62.0		61.5		61.5	

*Condensing unit above or below indoor unit.

COMPATIBILITY:

Indoor Unit		Outdoor Unit								
		38MARBQ12AA1	38MARBQ06AA3	38MARBQ09AA3	38MARBQ12AA3	38MARBQ18AA3	38MARBQ24AA3	38MARBQ30AA3	38MARBQ36AA3	38MARBQ36AB3
High Wall	619AHBQ12XA1	•								
	619AHBQ06XA3		•							
	619AHBQ09XA3			•						
	619AHBQ12XA3				•					
	619AHBQ18XA3					•				
	619AHBQ24XA3						•			
Cassette	619AHBQ30XA3						•			
	619AHBQ36XA3							•		
	40MBCQ09---3			•						
	40MBCQ12---3				•					
One-Way Cassette	40MBCQ18---3					•				
	40MBCA24XA3						•			
	40MCCAQ09XA3		•	•						
Ducted	40MCCAQ18XA3				•	•				
	40MBDQ09---3			•						
	40MBDQ12---3				•					
	40MBDQ18---3					•				
High Static Slim Ducted	40MBDQ24---3					•	•			
	40MBDAQ09XH3			•						
	40MBDAQ12XH3				•					
	40MBDAQ18XH3					•				
	40MBDAQ24XH3						•			
	40MBDAQ36XH3							•		
Console	40MBDAQ48XH3							•		
	40MBDAQ58XH3								•	
	40MBFAQ12XA3				•					
Air Handler	40MBFQ18---3					•				
	40MBFQ24---3						•			
	40MBABQ18XB3					• †				
	40MBABQ24XB3						• †			
Air Handler	40MBABQ30XB3						• †			
	40MBABQ36XB3								•	

- Not available/compatible or phased out
- Compatible
- † Compatible with phased out outdoor unit models starting with serial number: 5122V10319, see TIC 2022-0021 for additional information

Manufacturer reserves the right to discontinue, or change at any time, specification or designs without notice or incurring obligations.



FEATURES

- Available in 208/230V (6-36K) or 115V (12K)
- Modes: Cool, Heat, Dry, Fan, Auto
- Turbo mode
- Fully modulating fan speeds
- Sleep Mode
- Up-Down / Left-Right louver control (fixed or swing)
- ECO Mode
- Heating setback (46° F Heating Mode)
- Anti-corrosive fin coating

COMPATIBLE WITH

- 38MARB Outdoor Unit Single Zone (p 20)
- 38MGRB & 38MGHB Outdoor Unit Multi-Zone (p 50)

PREFERRED
SERIES

Sizes: 06 / 09 / 12 / 18 / 24 / 30 / 36
(208-230V); Size 12 (115V)

Select systems are ENERGY STAR® certified based on outdoor unit pairings



KEY FEATURES

Time-saving Design

The unit disassembles quickly with a removable filter on top for simplified maintenance. The motor and blower can be serviced without removing the cabinet.

Improved Efficiency & Performance

ECO mode with an intelligent eight-hour night cycle program saves up to 60% of energy for improved overnight comfort, efficiency and performance.

Customizable Comfort

Compatible with both single and multi-zone outdoor units for maximum flexibility.

CONTROLS

Wireless Remote Controller included with indoor unit

Optional Wired Remote Controller KSACN0801AAA (7-Day Programmable)



Wireless Remote Controller



Optional Wired Controller (7-Day Programmable) KSACN0801AAA

ACCESSORIES

Wi-Fi® kit KSAIF0601AAA

24V interface for third-party thermostat compatibility KSAIC0301230

SPECIFICATIONS:

619AHB High Wall									
Heat Pump									
System									
Size		12	6	9	12	18	24	30	36
Indoor Model		619AHBQ12XA1	619AHBQ06XA3	619AHBQ09XA3	619AHBQ12XA3	619AHBQ18XA3	619AHBQ24XA3	619AHBQ30XA3	619AHBQ36XA3
Electrical									
Voltage-Phase-Cycle	V-Ph-Hz	115-1-60	208/230-1-60	208/230-1-60	208/230-1-60	208/230-1-60	208/230-1-60	208/230-1-60	208/230-1-60
Power Supply		Indoor unit powered from outdoor unit							
MCA	A.	0.2500	0.3125	0.3125	0.3125	0.1625	0.6250	0.6250	0.6250
Controls									
Wireless Remote Controller (° F/° C Convertible)		Standard	Standard	Standard	Standard	Standard	Standard	Standard	Standard
Wired Remote Controller (° F/° C Convertible)		Optional	Optional	Optional	Optional	Optional	Optional	Optional	Optional
24V interface for 3rd Party Thermostat Control		Optional	Optional	Optional	Optional	Optional	Optional	Optional	Optional
Wi-Fi® Control for Phone App Control		Optional	Optional	Optional	Optional	Optional	Optional	Optional	Optional
Operating Range									
Cooling Outdoor DB Min - Max	° F (° C)	63~90 (17~32)	63~90 (17~32)	63~90 (17~32)	63~90 (17~32)	63~90 (17~32)	63~90 (17~32)	63~90 (17~32)	63~90 (17~32)
Heating Outdoor DB Min - Max	° F (° C)	32~86 (0~30)	32~86 (0~30)	32~86 (0~30)	32~86 (0~30)	32~86 (0~30)	32~86 (0~30)	32~86 (0~30)	32~86 (0~30)
Piping									
Pipe Connection Size - Liquid	in (mm)	1/4 (6.35)	1/4 (6.35)	1/4 (6.35)	1/4 (6.35)	1/4 (6.35)	3/8 (9.52)	3/8 (9.52)	3/8 (9.52)
Pipe Connection Size - Suction	in (mm)	1/2 (12.7)	3/8 (9.52)	3/8 (9.52)	1/2 (12.7)	1/2 (12.7)	5/8 (16)	5/8 (16)	5/8 (16)
Indoor Coil									
Face Area	Sq. Ft.	2.15	2.15	2.15	2.15	2.75	3.60	3.60	3.60
No. Rows		2	2	2	2	2	3	3	3
Fins per inch		20	20	20	20	20	20	20	20
Circuits		3	3	3	3	4	7	7	7
Indoor									
Unit Width	in (mm)	31.3 (795)	31.3 (795)	31.3 (795)	31.3 (795)	37.99 (965)	44.88 (1140)	44.88 (1140)	44.88 (1140)
Unit Height	in (mm)	11.61 (295)	11.61 (295)	11.61 (295)	11.61 (295)	12.56 (319)	14.57 (370)	14.57 (370)	14.57 (370)
Unit Depth	in (mm)	8.86 (225)	8.86 (225)	8.86 (225)	8.86 (225)	9.41 (239)	10.83 (275)	10.83 (275)	10.83 (275)
Net Weight	lbs (kg)	22.93 (10.4)	22.71 (10.3)	22.71 (10.3)	22.93 (10.4)	27.12 (12.3)	43.65 (19.8)	43.65 (19.8)	43.65 (19.8)
Number of Fan Speeds		4	4	4	4	4	4	4	4
Airflow (lowest to highest)	CFM	235/294/353/412	176/229/335/382	176/229/335/382	176/229/335/382	306/376/524/635	319/414/611/719	382/505/646/843	382/506/639/843
Sound Pressure (lowest to highest)	dB(A)	24/30/41/47	32/34/38/47	32/34/38/47	30/32/37/47	37/40/46/48	37/39/44/52	38/41/46/52	39/41/46/52
Air Throw Data	ft (m)	27.9 (8.5)	21.3 (7.1)	24.9 (7.6)	26.2 (8.0)	27.9 (8.5)	31.5 (9.6)	33.8 (10.3)	33.8 (10.3)
Moisture Removal	Pint/h (L/h)	0.048 (0.023)	0.67 (0.32)	0.015 (0.007)	0.046 (0.022)	0.091 (0.044)	0.108 (0.052)	0.154 (0.074)	0.240 (0.115)
Field Drain Pipe Size O.D.	in (mm)	0.625 (16)	0.625 (16)	0.625 (16)	0.625 (16)	0.625 (16)	0.625 (16)	0.625 (16)	0.625 (16)

COMPATIBILITY:

Indoor Unit	619AHBQ12XA1	619AHBQ06XA3	619AHBQ09XA3	619AHBQ12XA3	619AHBQ18XA3	619AHBQ24XA3	619AHBQ30XA3	619AHBQ36XA3
Outdoor Unit Single Zone*	38MARBQ12AA1	38MARBQ06AA3	38MARBQ09AA3	38MARBQ12AA3	38MARBQ18AA3	38MARBQ24AA3	38MARBQ30AA3	38MARBQ36AA3
Outdoor Unit Multi-Zone*			38MGRQ18B--3					
			38MGRQ24C--3					
			38MGRQ30D--3					
			38MGRQ36D--3					
			38MGRQ48E--3					

*Performance may vary based on the compatible outdoor units. See respective pages for performance data.

Manufacturer reserves the right to discontinue, or change at any time, specification or designs without notice or incurring obligations.

40MCCAQ One-Way Cassette

Preferred Series



FEATURES

- Modes: Cool, Heat, Dry, Fan, Auto
- Turbo mode
- Four fan speeds
- Sleep Mode
- ECO Mode
- Quiet indoor operation
- Anti-corrosive fin coating

COMPATIBLE WITH

- 38MARB Outdoor Unit
Single Zone (p 20)
- 38MGRB & 38MGHB
Outdoor Unit Multi-Zone (p 50)

PREFERRED™
SERIES

Sizes: 06 / 09 OR 12 / 18

Select systems are ENERGY STAR® certified based on outdoor unit pairings



KEY FEATURES

Flexible Installation

The one-way cassette is designed to be mounted between 16" joists for a range of installation applications, including corners.

High Efficiency

Achieve up to 25.0 SEER2 and 12.4 HSPF2 with an indoor unit that's inherently energy efficient, no matter the mode.

Dual Capacity

A capability available through a dipswitch setting on each one-way cassette indoor unit of the 6K/9K and 12K/18K sizes.

CONTROLS

Wireless Remote Controller included with indoor unit

Optional Wired Remote Controller
KSACN0701AAA (7-Day Programmable)

Optional Wired Remote Controller KSACN0101AAA
(Timer Function)



Wireless
Remote
Controller



Optional Wired Controller
(7-Day Programmable)
KSACN0701AAA



Wired Controller
(Timer Function)
KSACN0101AAA

ACCESSORIES

Wi-Fi® kit KSAIF0601AAA

24V interface for compatibility with conventional thermostat KSAIC0301230

SPECIFICATIONS:

40MCCAQ One-Way Cassette			
Heat Pump System			
Size	6/9*		12/18*
Indoor Model	40MCCAQ09XA3		40MCCAQ18XA3
Electrical			
Voltage-Phase-Cycle	V-Ph-Hz	208/230-1-60	208/230-1-60
Power Supply	Indoor Unit Powered From Outdoor Unit		
MCA	A.	3.0	3.0
Controls			
Wireless Remote Controller (° F / ° C Convertible)	Standard		Standard
Wired Remote Controller (° F / ° C Convertible)	Optional		Optional
Wi-Fi® Control for Phone App Control	Optional		Optional
Operating Range			
Cooling Indoor DB Min - Max	° F (° C)	60~90 (16~32)	60~90 (16~32)
Heating Indoor DB Min - Max	° F (° C)	32~86 (0~30)	32~86 (0~30)
Piping			
Pipe Connection Size - Liquid	in (mm)	1/4 (6.35)	1/4 (6.35)
Pipe Connection Size - Suction	in (mm)	3/8 (9.52)	1/2 (12.7)
Indoor Coil			
Face Area	Sq. Ft.	2.81	2.81
No. Rows	2		2
Fins per inch	20		20
Circuits	2		3
Indoor			
Unit Width	in (mm)	50.31 (1278)	50.31 (1278)
Unit Height	in (mm)	8.98 (228)	8.98 (228)
Unit Depth	in (mm)	13.19 (335)	13.19 (335)
Net Weight	lbs (kg)	43.87 (19.9)	43.87 (19.9)
Number of Fan Speeds	4		4
Airflow (lowest to highest)	CFM	235/259/294/341	247/282/312/353 - 12K 207/300/352/400 - 18K
Sound Pressure (lowest to highest)	dB(A)	35/37/38/40	37/40/42/43 - 12K 38/42/45/47 - 18K
Moisture Removal	Pint/h (L/h)	2.16 (1.02)	3.06 (1.45) - 12K 4.61 (2.18) - 18K

*Refer to the installation instructions for capacity setting
Performance may vary based on the compatible outdoor units. See respective pages for performance data.

COMPATIBILITY:

Indoor Unit	40MCCAQ09XA3	40MCCAQ09XA3	40MCCAQ18XA3	40MCCAQ18XA3
Outdoor Unit Single Zone	38MARBQ06AA3	38MARBQ09AA3	38MARBQ12AA3*	38MARBQ18AA3*
Outdoor Unit Multi-Zone	38MGRBQ18BA3			
	38MGHBQ24CA3			
	38MGHBQ30DA3			
	38MGRBQ36DA3			
	38MGHBQ36DA3			
	38MGRBQ48EA3			
	38MGHBQ48EA3			

*IDU must be set to the capacity size matching the ODU, refer to the installation instructions for more information.

Manufacturer reserves the right to discontinue, or change at any time, specification or designs without notice or incurring obligations.



FEATURES

- Available in 208/230V
- Modes: Cool, Heat, Dry, Fan, Auto
- Auto-restart function
- Louver control (fixed or swing)
- Three fan speeds
- Built-in condensate lift pump
- *Follow Me* (senses temperature at handheld remote)
- Heating setback (46° F Heating Mode)
- Quiet indoor operation, as low as 34 dB(A)
- Anti-corrosive fin coating
- Grille/ceiling panel 2' x 2' sizes 09 to 18 40MBCQ01XXX3
- Grille/ceiling panel 3' x 3' size 24 P/N 40MBCQ02XXX4

COMPATIBLE WITH

- 38MARB Outdoor Unit Single Zone (p 20)
- 38MGRB & 38MGHB Outdoor Unit Multi-Zone (p 50)

PREFERRED™
SERIES

Sizes: 09 / 12 / 18

Select systems are ENERGY STAR® certified based on outdoor unit pairings



KEY FEATURES

Built-in Condensate Lift Pump

Supplied with a condensate lift pump capable of lifting water (maximum amount 29.5 in. (750 mm.)) above the top of the unit.

Integrated Electrical Components

Easy maintenance with the circuit box inside the unit, provides a more compact size for easier installation.

CONTROLS

Wireless Remote Controller included with indoor unit

Optional Wired Remote Controller
KSACN0101AAA (Timer Function)

Optional Wired Remote Controller
KSACN0701AAA (7-Day Programmable)



Wireless Remote Controller



Wired Controller (Timer Function)
KSACN0101AAA



Wired Controller (7-Day Programmable)
KSACN0701AAA

ACCESSORIES

24V interface for compatibility with conventional thermostat KSAIC0301230

Wi-Fi® kit KSAIF0401AAA

NOTE: Grille is required; sold separately.
Wi-Fi® is a registered trademark of Wi-Fi Alliance®.

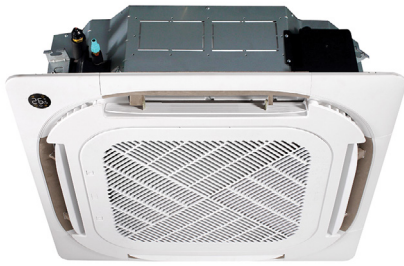
SPECIFICATIONS:

40MBCQ Cassette				
Heat Pump System				
Size		9	12	18
Indoor Model		40MBCQ09---3	40MBCQ12---3	40MBCQ18---3
Electrical				
Voltage-Phase-Cycle	V-Ph-Hz	208/230-1-60	208/230-1-60	208/230-1-60
Power Supply		Indoor Unit Powered From Outdoor Unit		
MCA	A.	0.2	0.2	0.2
Operating Range				
Cooling Indoor DB Min - Max	° F (° C)	63~90 (17~32)	63~90 (17~32)	63~90 (17~32)
Heating Indoor DB Min - Max	° F (° C)	32~86 (0~30)	32~86 (0~30)	32~86 (0~30)
Piping				
Pipe Connection Size - Liquid	in (mm)	1/4 (6.35)	1/4 (6.35)	1/4 (6.35)
Pipe Connection Size - Suction	in (mm)	3/8 (9.52)	1/2 (12.7)	1/2 (12.7)
Indoor				
Body Unit Width	in (mm)	22.44 (570)	22.44 (570)	22.44 (570)
Body Unit Height	in (mm)	10.24 (260)	10.24 (260)	10.24 (260)
Body Unit Depth	in (mm)	22.44 (570)	22.44 (570)	22.44 (570)
Body Net Weight	lbs (kg)	35.27 (16)	35.27 (16)	39.68 (18)
Panel Unit Width		25.47 (647)	25.47 (647)	25.47 (647)
Panel Unit Height	in (mm)	1.97 (50)	1.97 (50)	1.97 (50)
Panel Unit Depth	in (mm)	25.47 (647)	25.47 (647)	25.47 (647)
Panel Net Weight	lbs (kg)	5.51 (2.5)	5.51 (2.5)	5.51 (2.5)
Number of Fan Speeds		3	3	3
Airflow (lowest to highest)	CFM	260/320/380	280/340/400	290/350/420
Sound Pressure (lowest to highest)	dB(A)	34/39/44	36/39/42	46/48/50
Air Throw Data	ft (m)	23 (7)	23 (7)	30 (9)
Moisture Removal	Pint/h (L/h)	1.58 (0.75)	2.88 (1.366)	4.26 (2.02)
Field Drain Pipe Size O.D.	in (mm)	1 (25.4)	1 (25.4)	1 (25.4)

COMPATIBILITY:

Indoor Unit	40MBCQ09---3	40MBCQ12---3	40MBCQ18---3
Outdoor Unit Single Zone*	38MARBQ09AA3	38MARBQ12AA3	38MARBQ18AA3
Outdoor Unit Multi-Zone*	38MGRQ18B--3		
	38MGRQ24C--3		
	38MGRQ30D--3		
	38MGRQ36D--3		
	38MGRQ48E--3		

*Performance may vary based on the compatible outdoor units. See respective pages for performance data.
For sizes 36 to 48 refer to the Light Commercial section; Backward compatible with 38MAQ Single Zone and 38MGQ Multi-Zone Systems.



FEATURES

- Modes: Cool, Heat, Dry, Fan, Auto, Turbo
- Louver control (fixed or swing)
- Outside air intake
- Built-in condensate lift pump
- *Follow Me* (senses temperature at handheld remote)
- Heating setback (46° F Heating Mode)
- Quiet indoor operation
- Anti-corrosive fin coating

COMPATIBLE WITH

- 38MARB Outdoor Unit Single Zone (p 20)
- 38MGRB & 38MGHB Outdoor Unit Multi-Zone (p 50)

PREFERRED™
SERIES

Size: 24

Select systems are ENERGY STAR® certified based on outdoor unit pairings



KEY FEATURES

Easier Service & Installation

A relocated condensate pump allows for easy replacement and increased spacing between lines.

Seamless Connection

Optimized Wi-Fi® connectivity means fewer installation steps for faster, more seamless connections.

Enhanced Design

A new, ergonomic design and larger vents for improved airflow means greater comfort from an unobtrusive indoor unit.

CONTROLS

Wireless Remote Controller included with indoor unit

Optional Wired Remote Controller KSACN0101AAA (Timer Function)

Optional Wired Remote Controller KSACN0701AAA (7-Day Programmable)



Wireless Remote Controller



Wired Controller (Timer Function) KSACN0101AAA



Wired Controller (7-Day Programmable) KSACN0701AAA

SPECIFICATIONS:

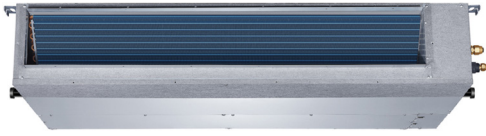
40MBCAQ Cassette		
Heat Pump System		
Size		24
Indoor Model		40MBCAQ24XA3
Electrical		
Voltage-Phase-Cycle	V-Ph-Hz	208/230-1-60
Power Supply		Indoor Unit Powered From Outdoor Unit
MCA	A.	1.0
Controls		
Wireless Remote Controller (° F / ° C Convertible)		Standard
Wired Remote Controller (° F / ° C Convertible)		Optional
Operating Range		
Cooling Indoor DB Min - Max	° F (° C)	60.8~90 (16~32)
Heating Indoor DB Min - Max	° F (° C)	32~86 (0~30)
Piping		
Pipe Connection Size - Liquid	in (mm)	3/8 (9.52)
Pipe Connection Size - Suction	in (mm)	5/8 (15.9)
Indoor		
Body Unit Width	in (mm)	32.68 (830)
Body Unit Height	in (mm)	8.07 (205)
Body Unit Depth	in (mm)	32.68 (830)
Body Net Weight	lbs (kg)	47.18 (21.4)
Panel Unit Width		37.4 (950)
Panel Unit Height	in (mm)	2.17 (55)
Panel Unit Depth	in (mm)	37.4 (950)
Panel Net Weight	lbs (kg)	11.02 (5)
Number of Fan Speeds		4
Airflow (lowest to highest)	CFM	547/635/706/764
Sound Pressure (lowest to highest)	dB(A)	42/44/47/49
Air Throw Data	ft (m)	14.7 (4.5)
Moisture Removal	Pint/h (L/h)	5.6 (2.6)
Field Drain Pipe Size O.D.	in (mm)	1 (25.4)

COMPATIBILITY:

Indoor Unit	40MBCAQ24XA3
Outdoor Unit Single Zone*	38MARBQ24AA3
	38MGRQ30D--3
	38MGRQ36D--3
	38MGRQ48E--3
Outdoor Unit Multi-Zone*	38MGHBQ30DA3
	38MGRBQ36DA3
	38MGHBQ36DA3
	38MGRBQ48EA3
	38MGHBQ48EA3

*Performance may vary based on the compatible outdoor units. See respective pages for performance data.

Manufacturer reserves the right to discontinue, or change at any time, specification or designs without notice or incurring obligations.



FEATURES

- Available in 208/230V
- Modes: Cool, Heat, Dry, Fan, Auto
- Vertical or horizontal installation
- Up to 0.64 in W.C.
- Rear or bottom return
- Constant CFM operation
- *Follow Me* (senses temperature at handheld remote)
- Heating setback (46° F Heating Mode)
- Quiet indoor operation, as low as 30 dB(A)
- Anti-corrosive fin coating

COMPATIBLE WITH

- 38MARB Outdoor Unit Single Zone (p 20)
- 38MGRB & 38MGHB Outdoor Unit Multi-Zone (p 50)

PREFERRED™
SERIES

Sizes: 09 / 12 / 18 / 24

Select systems are ENERGY STAR® certified based on outdoor unit pairings



KEY FEATURES

Vertical or Horizontal Installation

Designed for maximum installation flexibility with the built-in secondary drain pan which allows the unit to be mounted vertically for either a floor or ceiling-concealed installation, depending on existing conditions.

Built-in Condensate Lift Pump

Supplied with a condensate lift pump capable of lifting water (maximum amount 29.5 in. (750 mm.)) above the top of the unit.*

CONTROLS

Wireless Remote Controller included with indoor unit

Wired Remote Controller KSACN0701AAA (7-Day Programmable) included with indoor unit



Wireless Remote Controller



Wired Controller (7-Day Programmable) KSACN0701AAA

ACCESSORIES

24V interface for compatibility with conventional thermostat KSAIC0301230

Wi-Fi® kit KSAIF0401AAA

*Built-in condensate lift pump only available on sizes 24 - 58. External condensate lift pump shipped with units (sizes 09 - 18).

SPECIFICATIONS:

40MBDQ Ducted					
Heat Pump System					
Size		9	12	18	24
Indoor Model		40MBDQ09---3	40MBDQ12---3	40MBDQ18---3	40MBDQ24---3
Electrical					
Voltage-Phase-Cycle	V-Ph-Hz	208/230-1-60	208/230-1-60	208/230-1-60	208/230-1-60
Power Supply		Indoor Unit Powered From Outdoor Unit			
MCA	A.	1.11	1.11	1.2	1.2
Operating Range					
Cooling Indoor DB Min - Max	° F (° C)	63~90 (17~32)	63~90 (17~32)	63~90 (17~32)	63~90 (17~32)
Heating Indoor DB Min - Max	° F (° C)	32~86 (0~30)	32~86 (0~30)	32~86 (0~30)	32~86 (0~30)
Piping					
Pipe Connection Size - Liquid	in (mm)	1/4 (6.35)	1/4 (6.35)	1/4 (6.35)	3/8 (9.52)
Pipe Connection Size - Suction	in (mm)	3/8 (9.52)	1/2 (12.7)	1/2 (12.7)	5/8 (16)
Indoor					
Unit Width	in (mm)	27.56 (700)	27.56 (700)	34.65 (880)	43.31 (1100)
Unit Height	in (mm)	7.87 (200)	7.87 (200)	8.27 (210)	9.8 (249)
Unit Depth	in (mm)	19.92 (506)	19.92 (506)	26.54 (674)	30.47 (774)
Net Weight	lbs (kg)	43.56 (19.8)	43.56 (19.8)	54 (24.5)	86.86 (39.4)
Number of Fan Speeds		3	3	3	3
Airflow (lowest to highest)	CFM	147/211/264	176/282/353	300/400/480	440/700/780
Sound Pressure (lowest to highest)	dB(A)	30/34/38	35/37/39	35/37/39	35.5/40/44
Max Static Pressure	in W.C.	0.20	0.20	0.40	0.64
Field Drain Pipe Size O.D.	in (mm)	1 (25.4)	1 (25.4)	1 (25.4)	1 (25.4)

COMPATIBILITY:

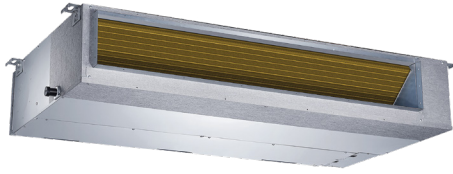
Indoor Unit	40MBDQ09---3	40MBDQ12---3	40MBDQ18---3	40MBDQ24---3
Outdoor Unit Single Zone*	38MARBQ09AA3	38MARBQ12AA3	38MARBQ18AA3	38MARBQ24AA3
Outdoor Unit Multi-Zone*	38MGRQ18B--3			
	38MGRQ24C--3			
	38MGRQ30D--3			
	38MGRQ36D--3			
	38MGRQ48E--3			

*Performance may vary based on the compatible outdoor units. See respective pages for performance data.
For sizes 36 to 58 refer to the Light Commercial section; Backward compatible with 38MAQ Single Zone and 38MGQ Multi-Zone Systems.

Manufacturer reserves the right to discontinue, or change at any time, specification or designs without notice or incurring obligations.

40MBDAQ High Static Slim Ducted

Preferred Series



Sizes: 09 / 12 / 18 / 24

Select systems are ENERGY STAR® certified based on outdoor unit pairings



FEATURES

- Vertical or horizontal installation
- External static pressures of up to 0.80 in W.C.
- Constant air volume control
- Modes: Cool, Heat, Dry, Fan, Auto
- Rear or bottom return
- Outside air intake
- Built-in condensate lift pump
- *Follow Me* (senses temperature at handheld remote)
- Quiet indoor operation, as low as 35 dB(A)

COMPATIBLE WITH

- 38MARB Outdoor Unit Single Zone (p 20)
- 38MGRB & 38MGHB Outdoor Unit Multi-Zone (p 50)

PREFERRED
SERIES

KEY FEATURES

Discrete Design

A slim duct design, recessed installation and exterior connection via flexible refrigerant tubing allow this unit to integrate seamlessly into existing architecture and new construction.

Improved Indoor Air Quality

Each unit comes equipped with a washable, reusable filter for simple, cost-effective servicing. And with the ability to accommodate filters rated up to MERV 13, customers can benefit from the gold standard in indoor air quality technology without sacrificing performance or efficiency.

CONTROLS

Wireless Remote Controller included with indoor unit

Wired Remote Controller with Timer Function
KSACN0101AAA

Wired Remote Controller KSACN0701AAA
(7-Day Programmable)



Wireless Remote Controller



Wired Controller (Timer Function)
KSACN0101AAA



Wired Controller (7-Day Programmable)
KSACN0701AAA

ACCESSORIES

Wi-Fi® kit KSAIF0401AAA

24V interface Kit 230V KSAIC0301230

SPECIFICATIONS:

40MBDAQ High Static Slim Ducted					
Heat Pump System					
Size		9	12	18	24
Indoor Model		40MBDAQ09XH3	40MBDAQ12XH3	40MBDAQ18XH3	40MBDAQ24XH3
Electrical					
Voltage-Phase-Cycle	V-Ph-Hz	208/230-1-60	208/230-1-60	208/230-1-60	208/230-1-60
Power Supply		Indoor Unit Powered From Outdoor Unit			
MCA	A.	3.0	3.0	3.0	3.0
Controls					
Wireless Remote Controller (° F / ° C Convertible)		Standard	Standard	Standard	Standard
Wired Remote Controller (° F / ° C Convertible)		Standard	Standard	Standard	Standard
24V interface for 3rd Part Thermostat Control		Optional	Optional	Optional	Optional
Wi-Fi® Control for Phone App Control		Optional	Optional	Optional	Optional
Operating Range					
Cooling Indoor DB Min - Max	° F (° C)	62~90 (16~32)	62~90 (16~32)	62~90 (16~32)	62~90 (16~32)
Heating Indoor DB Min - Max	° F (° C)	59~84 (15~29)	59~84 (15~29)	59~84 (15~29)	59~84 (15~29)
Piping					
Pipe Connection Size - Liquid	in (mm)	1/4 (6.35)	1/4 (6.35)	1/4 (6.35)	3/8 (9.52)
Pipe Connection Size - Suction	in (mm)	3/8 (9.52)	1/2 (12.7)	1/2 (12.7)	5/8 (16)
Indoor					
Unit Width	in (mm)	34.65 (880)	43.31 (1100)	43.31 (1100)	43.31 (1100)
Unit Height	in (mm)	8.27 (210)	9.8 (249)	9.8 (249)	9.8 (249)
Unit Depth	in (mm)	26.54 (674)	30.47 (774)	30.47 (774)	30.47 (774)
Net Weight	lbs (kg)	55.34 (25.1)	83.11 (37.7)	88.18 (40)	87.52 (39.7)
Number of Fan Speeds		3	3	3	3
Airflow (lowest to highest)	CFM	176/235/300	176/294/400	619/812/949	642/861/1045
Sound Pressure (lowest to highest)	dB(A)	30/32/38	36/37/39	29/33/36	33/36/38
Max Static Pressure	in W.C.	0.64	0.64	0.68	0.8
Field Drain Pipe Size O.D.	in (mm)	2.64 (1.25)	1.0 (25.4)	1.0 (25.4)	1.0 (25.4)

Performance may vary based on the compatible outdoor units. See respective pages for performance data.

COMPATIBILITY:

Indoor Unit	40MBDAQ09XH3	40MBDAQ12XH3	40MBDAQ18XH3	40MBDAQ24XH3
Outdoor Unit Single Zone	38MARBQ09AA3	38MARBQ12AA3	38MARBQ18AA3	38MARBQ24AA3
Outdoor Unit Multi-Zone	38MGHBQ24CA3			
		38MGHBQ30DA3		
		38MGRBQ36DA3		
		38MGHBQ36DA3		
		38MGRBQ48EA3		
		38MGHBQ48EA3		

For Sizes 36, 48 and 58, refer to the Light Commercial Section
 Backward compatible with 38MAQ Single Zone and 38MGQ Multi-Zone Systems

Manufacturer reserves the right to discontinue, or change at any time, specification or designs without notice or incurring obligations.



FEATURES

- Modes: Cool, Heat, Dry, Fan, Auto
- 4-way installation (Upflow, Downflow, Right, Left)
- New aluminum coil
- Automatic Airflow Technology with static pressure up to 0.8 in W.C.
- Less than 2% air leakage
- Easy maintenance
- Quiet indoor operation
- Anti-corrosive fin coating

COMPATIBLE WITH

- 38MARB Outdoor Unit Single Zone (p 20)
- 38MGRB & 38MGHB Outdoor Unit Multi-Zone (p 50)

PREFERRED™
SERIES

Size: 18 / 24 / 30 / 36

Select systems are ENERGY STAR® certified based on outdoor unit pairings



FEATURES

Unmatched Maintenance Simplicity

With a top panel and an indoor coil that can be easily removed, get faster access to the core parts of the unit needed for service. You only need to remove two screws!

Less Complex Electronic

Having only two integrated printed circuit boards means the electronic components are less complicated. One is the main control board, and the other is the function board for the 24V interface, dip switch, wired controller and LED display.

Easier Access to Electric Heater

This single-piece construction enables easy installation and maintenance.

Modular Slide Design

The indoor coil can be easily pulled out through the slide track for quick and easy maintenance.

CONTROLS

Wireless Remote Controller included with indoor unit

24V interface for third-party thermostat compatibility built-in

WARRANTY

Limited Warranty*

10-year limited to original purchaser on compressor and parts upon timely registration, otherwise 5 years.

*For residential applications. See warranty for full details.

SPECIFICATIONS:

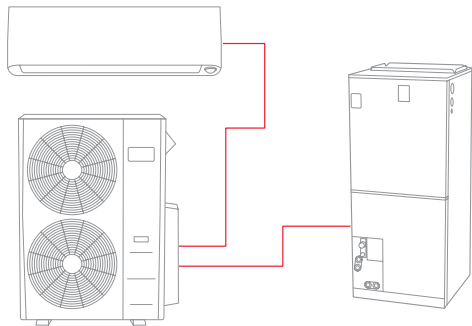
40MBAB Air Handler					
Heat Pump					
System					
Size		18	24	30	36
Indoor Model		40MBABQ18XB3	40MBABQ24XB3	40MBABQ30XB3	40MBABQ36XB3
Electrical					
Voltage-Phase-Cycle	V-Ph-Hz	208/230-1-60	208/230-1-60	208/230-1-60	208/230-1-60
Power Supply		Indoor unit powered from outdoor unit			
MCA	A.	3	4	4.5	5
Controls					
Wireless Remote Controller (° F / ° C Convertible)		Standard	Standard	Standard	Standard
Wired Remote Controller (° F / ° C Convertible)		Standard	Standard	Standard	Standard
Operating Range					
Cooling Indoor DB Min - Max	° F (° C)	62~90 (17~32)	60~90 (16~32)	60~90 (16~32)	60~90 (16~32)
Heating Indoor DB Min - Max	° F (° C)	32~86 (0~30)	32~86 (0~30)	32~86 (0~30)	32~86 (0~30)
Piping					
Pipe Connection Size - Liquid	in (mm)	1/4 (6.35)	3/8 (9.52)	3/8 (9.52)	3/8 (9.52)
Pipe Connection Size - Suction	in (mm)	1/2 (12.7)	5/8 (16)	5/8 (16)	5/8 (16)
Indoor					
Unit Width	in (mm)	17.5 (445)	17.5 (445)	21 (534)	21 (534)
Unit Height	in (mm)	45 (1143)	45 (1143)	49 (1245)	49 (1245)
Unit Depth	in (mm)	21 (534)	21 (534)	21 (534)	21 (534)
Net Weight	lbs (kg)	106.7 (48.4)	106.7 (48.4)	129.63 (58.8)	129.63 (58.8)
Number of Fan Speeds		4	4	4	4
Airflow (lowest to highest)	CFM	488/529/576/618	629/694/759/824	712/806/894/1088	865/971/1082/1188
Sound Pressure - Cooling (lowest to highest)	dB(A)	35.2/35.7/36.4/37.2	38.2/39.9/41.0/42.5	35.8/38.1/40.4/42.7	41.4/44.0/48.5
Sound Pressure - Heating (lowest to highest)	dB(A)	28.9/30.5/33.6/34.2	32.2/35.8/39.5/40.5	28.1/33.1/39.3/42.4	33.9/39.0/45.1
Max Static Pressure	in W.C.	0.8	0.8	0.8	0.8
Field Drain Pipe Size O.D.	in (mm)	3/4 (19.1)	3/4 (19.1)	3/4 (19.1)	3/4 (19.1)

*Performance may vary based on the compatible outdoor units. See respective pages for performance data.

COMPATIBILITY:

Indoor Unit	40MBABQ18XB3	40MBABQ24XB3	40MBABQ30XB3	40MBABQ36XB3
Outdoor Unit Single Zone	38MARBQ18AA3	38MARBQ24AA3	38MARBQ30AA3	38MARBQ36AB3
Outdoor Unit Multi-Zone	38MGHBQ24CA3			
	38MGHBQ30DA3	38MGHBQ30DA3		
	38MGRBQ36DA3	38MGRBQ36DA3		
	38MGHBQ36DA3	38MGHBQ36DA3		
	38MGRBQ48EA3	38MGRBQ48EA3	38MGRBQ48EA3	38MGRBQ48EA3
	38MGHBQ48EA3	38MGHBQ48EA3	38MGHBQ48EA3	38MGHBQ48EA3

Multi-Zone configuration



Manufacturer reserves the right to discontinue, or change at any time, specification or designs without notice or incurring obligations.

40MBFAQ & 40MBFQ Console

Preferred Series



**Console Sizes 18 & 24
40MBFQ**

**Floor Console Size 12
40MBFAQ**

FEATURES

- Available in 208/230V
- Modes: Cool, Heat, Dry, Fan, Auto
- Auto-restart function
- Louver control (fixed or swing)
- Three fan speeds
- Air discharge from top and bottom (size 12 only)
- *Follow Me* (senses temperature at handheld remote)
- Heating setback (46° F Heating Mode)
- Quiet indoor operation, as low as 31.3 dB(A)
- Anti-corrosive fin coating

COMPATIBLE WITH

- 38MARB Outdoor Unit Single Zone (p 20)
- 38MGRB & 38MGHB Outdoor Unit Multi-Zone (p 50)

PREFERRED™
SERIES

Sizes: 12 / 18 / 24

Select systems are ENERGY STAR® certified based on outdoor unit pairings



KEY FEATURES

Optional 2-Way Air Outlet

For up and down air-outlet or up air-outlet on size 12 only.

Outside Air Intake

Outside air can be brought into the room through the connection available on the indoor unit, which helps meet the ventilation requirement, only on sizes 18-24.

CONTROLS

Wireless Remote Controller included with indoor unit

Optional Wired Remote Controller KSACN0601AAA (7-Day Programmable) size 12

Optional Wired Remote Controller KSACN0701AAA (7-Day Programmable) sizes 18 and 24



Wireless Remote Controller



Wired Controller (7-Day Programmable)
KSACN0601AAA & KSACN0701AAA

ACCESSORIES

Wi-Fi® kit (sizes 18-24 only*) KSAIF0401AAA

24V interface for compatibility with conventional thermostat KSAIC0301230

*Not available for size 12.

SPECIFICATIONS:

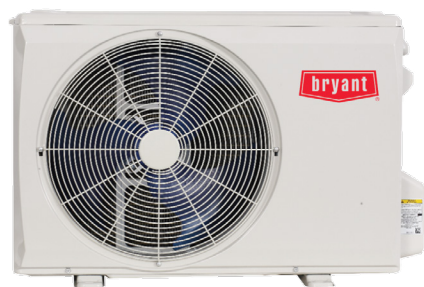
40MBFAQ & 40MBFQ Console				
Heat Pump System				
Size		12	18	24
Indoor Model		40MBFAQ12---3	40MBFQ18---3	40MBFQ24---3
Electrical				
Voltage-Phase-Cycle	V-Ph-Hz	208/230-1-60	208/230-1-60	208/230-1-60
Power Supply		Indoor Unit Powered From Outdoor Unit		
MCA	A.	0.29	1.0	1.0
Operating Range				
Cooling Indoor DB Min - Max	° F (° C)	63~90 (17~32)	62~90 (17~32)	62~90 (17~32)
Heating Indoor DB Min - Max	° F (° C)	32~86 (0~30)	32~86 (0~30)	32~86 (0~30)
Piping				
Pipe Connection Size - Liquid	in (mm)	1/4 (6.35)	1/4 (6.35)	3/8 (9.52)
Pipe Connection Size - Suction	in (mm)	1/2 (12.7)	1/2 (12.7)	5/8 (16)
Indoor				
Unit Width	in (mm)	27.56 (700)	42.05 (1,068)	42.05 (1,068)
Unit Height	in (mm)	23.62 (600)	26.57 (675)	26.57 (675)
Unit Depth	in (mm)	8.27 (210)	9.25 (235)	9.25 (235)
Net Weight	lbs (kg)	32.41 (14.7)	55.12 (25)	58.42 (26.5)
Number of Fan Speeds		3	3	3
Airflow (lowest to highest)	CFM	220/250/280	420/485/550	600/710/760
Sound Pressure (lowest to highest)	dB(A)	34/41/45	39/44/47	46/50/52
Air Throw Data	ft (m)	23 (7)	26 (8)	26 (8)
Field Drain Pipe Size O.D.	in (mm)	1 (25.4)	1 (25.4)	1 (25.4)

COMPATIBILITY:

Indoor Unit	40MBFAQ12---3	40MBFQ18---3	40MBFQ24---3
Outdoor Unit Single Zone*	38MARBQ12AA3	38MARBQ18AA3	38MARBQ24AA3
Outdoor Unit Multi-Zone*	38MGRQ18B--3		
		38MGRQ24C--3	
		38MGRQ30D--3	
		38MGRQ36D--3	
		38MGRQ48E--3	

*Performance may vary based on the compatible outdoor units. See respective pages for performance data.

Manufacturer reserves the right to discontinue, or change at any time, specification or designs without notice or incurring obligations.



FEATURES

- 100% Heating Capacity at -4° F (-20° C)*
- 100% Cooling capacity at -22° F (-30° C) without additional kit
- Cost competitive
- Built-in basepan heater
- Auto-restart function
- Condenser high-temperature protection
- Refrigerant leakage detection
- Quiet outdoor operation
- Anti-corrosive fin coating

COMPATIBLE WITH

- 40MHHAC High Wall Cooling Only (p 44)
- 40MHHAQ High Wall Heat Pump (p 44)

LEGACY™
— LINE

Cooling Only - 38MHRDC

Sizes: 09 / 12 / 18 / 24

Heat Pump - 38MHRCQ With Basepan Heater

Sizes: 09 / 12 / 18 / 24 / 30 / 36

Up to 21.7 SEER2

Up to 9.4 HSPF2

KEY FEATURES

Easy Maintenance

Simple and fast installation and maintenance means less system downtime and costs.

Small Physical Size

With an optimized cabinet design and small footprint, the unit is unobtrusive and quiet.

An economical choice that can provide comfort when you need it.

* For certain models.

SPECIFICATIONS:

38MHRQC Outdoor Unit									
Heat Pump									
System									
Size		09	12	09	12	18	24	30	36
Outdoor Model		38MHRQC09AA1	38MHRQC12AA1	38MHRQC09AA3	38MHRQC12AA3	38MHRQC18AA3	38MHRQC24AA3	38MHRQC30AA3	38MHRQC36AA3
Electrical									
Voltage-Phase-Cycle	V-Ph-Hz	115-1-60	115-1-60	208/230-1-60	208/230-1-60	208/230-1-60	208/230-1-60	208/230-1-60	208/230-1-60
MCA	A.	20	18.5	12.0	15	15	19	25	28
MOCP - Fuse Rating	A.	30	25	15	15	20	30	30	35
Operating Range									
Cooling Outdoor DB Min - Max	° F (° C)	0~122 (-17~50)	0~122 (-17~50)	0~122 (-17~50)	0~122 (-17~50)	0~122 (-17~50)	0~122 (-17~50)	0~122 (-17~50)	0~122 (-17~50)
Cooling Outdoor DB Min - Max	° F (° C)	0~86 (-17~30)	0~86 (-17~30)	0~86 (-17~30)	0~86 (-17~30)	0~86 (-17~30)	0~86 (-17~30)	0~86 (-17~30)	0~86 (-17~30)
Piping									
Total Piping Length	ft (m)	82 (25)	82 (25)	82 (25)	82 (25)	98.4 (30)	164 (50)	164 (50)	213 (65)
Piping Lift*	ft (m)	32 (10)	32 (10)	32 (10)	32 (10)	65.6 (20)	82 (25)	82 (25)	98.4 (30)
Pipe Connection Size - Liquid	in (mm)	1/4 (6.35)	1/4 (6.35)	1/4 (6.35)	1/4 (6.35)	1/4 (6.35)	3/8 (9.52)	3/8 (9.52)	3/8 (9.52)
Pipe Connection Size - Suction	in (mm)	3/8 (12.7)	1/2 (9.52)	3/8 (9.52)	1/2 (12.7)	1/2 (12.7)	5/8 (15.9)	5/8 (15.9)	5/8 (15.9)
Refrigerant									
Type		R410A	R410A	R410A	R410A	R410A	R410A	R410A	R410A
Charge	lbs (kg)	1.59 (0.72)	1.59 (0.72)	1.59 (0.72)	2.98 (1.35)	3.92 (1.78)	1.79 (0.81)	2.98 (1.35)	3.92 (1.78)
Compressor									
Type		Rotary Inverter	Rotary Inverter	Rotary Inverter	Rotary Inverter	Rotary Inverter	Rotary Inverter	Rotary Inverter	Rotary Inverter
Outdoor									
Unit Width	in (mm)	30.12 (765)	30.12 (765)	30.12 (765)	30.12 (765)	31.69 (805)	35.04 (890)	37.24 (946)	37.24 (946)
Unit Height	in (mm)	21.85 (555)	21.85 (555)	21.85 (555)	21.85 (555)	21.81 (554)	26.50 (673)	31.89 (810)	31.89 (810)
Unit Depth	in (mm)	11.93 (303)	11.93 (303)	11.93 (303)	11.93 (303)	12.99 (330)	13.46 (342)	16.14 (410)	16.14 (410)
Net Weight	lbs (kg)	57.76 (26.2)	62.17 (28.2)	55.11 (25.0)	59.30 (26.9)	73.85 (33.5)	97.88 (44.4)	142.86 (64.8)	150.13 (68.1)
Airflow	CFM	1,294	1,235	1,294	1,235	1,235	1,765	2,235	2,235
Sound Pressure	dB(A)	55	54	55	56	55	60	63	65

COMPATIBILITY:

Indoor Unit	Outdoor Unit							
	38MHRQC09AA1	38MHRQC12AA1	38MHRQC09AA3	38MHRQC12AA3	38MHRQC18AA3	38MHRQC24AA3	38MHRQC30AA3	38MHRQC36AA3
High Wall	40MHHAQ09XA1	•						
	40MHHAQ12XA1		•					
	40MHHAQ09XA3			•				
	40MHHAQ12XA3				•			
	40MHHAQ18XA3					•		
	40MHHAQ24XA3						•	
	40MHHAQ30XA3							•
	40MHHAQ36XA3							

Backward compatible with 38MHRBQ Single Zone Systems

PERFORMANCE:

40MHHAQ High Wall									
Heat Pump									
Indoor Unit		40MHHAQ09XA1	40MHHAQ12XA1	40MHHAQ09XA3	40MHHAQ12XA3	40MHHAQ18XA3	40MHHAQ24XA3	40MHHAQ30XA3	40MHHAQ36XA3
Cooling System Tons		0.75	1.0	0.75	1.0	1.5	2.0	2.5	3.0
Cooling Rated Capacity	Btu/h	9,000	12,000	9,000	12,000	18,000	24,000	30,000	36,000
Cooling Cap. Range Min - Max	Btu/h	2,650~10,300	3,800~12,100	2,900~10,500	3,800~13,350	3,900~20,000	6,200~24,600	8,200~30,670	8,300~37,500
SEER2		21.5	20.8	21.7	21.4	19.5	18.5	21	18
EER2		12.5	10.3	12.6	10.8	11.0	9.5	12.2	9.5
Heating Rated Capacity (47° F)	Btu/h	10,000	12,000	10,000	12,000	18,800	24,000	30,000	36,000
Heating Rated Capacity (17° F)	Btu/h	5,800	7,000	5,800	7,000	11,400	16,300	20,000	20,000
Heating Maximum Capacity (17° F)	Btu/h	7,800	9,000	7,500	9,000	12,500	14,800	21,100	25,000
Heating Maximum Capacity (5° F)	Btu/h	7,500	6,272	7,300	8,000	11,700	15,400	17,800	20,000
Heating Cap. Range Min - Max	Btu/h	2,700~10,500	2,730~12,500	2,400~10,500	2,730~13,900	6,300~19,400	6,800~26,800	11,800~30,800	10,900~37,360
HSPF2		9.1	8.7	9.4	9.2	8.7	8.6	8.7	7.8
COP (47° F)	W/W	3.26	3.05	3.24	3.38	3.05	2.99	2.75	2.78
COP (17° F)	W/W	2.5	2.5	2.5	2.5	2.52	2.3	2.39	2.3
COP (5° F)	W/W	2.15	1.68	2.2	1.8	2.05	1.76	1.8	1.76

PERFORMANCE:

40MHAC High Wall						
Cooling Only						
Indoor Unit		40MHAC09XA3	40MHAC12XA1	40MHAC12XA3	40MHAC18XA3	40MHAC24XA3
Outdoor Model		38MHRDC09AA3	38MHRDC12AA1	38MHRDC12AA3	38MHRDC18AA3	38MHRDC24AA3
Cooling Rated Capacity	Btu/h	9,000	12,000	12,000	18,000	24,000
Cooling System Tons		0.75	1.0	1.0	1.5	2.0
Cooling Cap. Range Min - Max	Btu/h	2800~11000	3300~12500	3030~12500	4200~18300	4700~23600
SEER2		20.5	21.0	21.0	21.0	20.0
EER2		12.5	11.9	12.0	11.3	10.2

SPECIFICATIONS:

38MRDC Outdoor Unit						
Cooling Only						
System						
Size		9	12	12	18	24
Outdoor Model		38MRDC09AA3	38MRDC12AA1	38MRDC12AA3	38MRDC18AA3	38MRDC24AA3
Electrical						
Voltage-Phase-Cycle	V-Ph-Hz	208/230-1-60	115-1-60	208/230-1-60	208/230-1-60	208/230-1-60
MCA	A.	11	18	11	16	16
Recommended Fuse Size	A.	15	20	15	20	20
MOCP - Fuse Rating	A.	15	30	12	20	20
Max-Min Voltage*	V	253-187	127-104	253-187	253-187	253-187
Operating Range						
Cooling Outdoor DB Min - Max	° F (° C)	0~122 (-17~50)	0~122 (-17~50)	0~122 (-17~50)	0~122 (-17~50)	0~122 (-17~50)
Piping						
Total Piping Length	ft (m)	82 (25)	82 (25)	82 (25)	98 (30)	98 (30)
Piping Lift**	ft (m)	32 (10)	32 (10)	32 (10)	65 (20)	82 (25)
Pipe Connection Size - Liquid	in (mm)	1/4 (6.35)	1/4 (6.35)	1/4 (6.35)	1/4 (6.35)	3/8 (9.52)
Pipe Connection Size - Suction	in (mm)	3/8 (9.52)	1/2 (12.7)	1/2 (12.7)	1/2 (12.7)	5/8 (16)
Refrigerant						
Type		R410A	R410A	R410A	R410A	R410A
Charge	lbs (kg)	1.26 (0.57)	1.46 (0.66)	1.46 (0.66)	1.98 (0.9)	2.36 (1.07)
Metering Device		Capillary	Capillary	Capillary	Capillary	Capillary
Compressor						
Compressor Type		Rotary Inverter	Rotary Inverter	Rotary Inverter	Rotary Inverter	Rotary Inverter
Model		KSK103D33UEZ3	KSK103D33UEZ3	KSK103D33UEZ3	KSN140D58UFZ	KSN140D58UFZ
Oil Type		VG74	VG74	VG74	VG74	VG74
Oil Charge	Fl. Oz.	10.48	10.48	10.48	14.88	14.88
Rated Input Current of the Power Conversion Equipment	A.	6.7	14.0	7.0	11.5	15.5
Outdoor						
Unit Width	in (mm)	28.35 (720)	28.35 (720)	28.35 (720)	30.12 (765)	31.69 (805)
Unit Height	in (mm)	19.49 (495)	19.49 (495)	19.49 (495)	21.85 (555)	21.81 (554)
Unit Depth	in (mm)	10.63 (270)	10.63 (270)	10.63 (270)	11.93 (303)	12.99 (330)
Net Weight	lbs (kg)	54.45 (24.7)	54.45 (24.7)	54.45 (24.7)	59.30 (26.9)	73.85 (33.5)
Airflow	CFM	1,059	1,059	1,059	1,235	1,353
Sound Pressure	dB(A)	54.0	54.0	54.5	55.5	56.5

* Permissible limits of the voltage range at which the unit will operate satisfactorily

** Condensing unit above or below indoor unit

COMPATIBILITY:

Indoor Unit		Outdoor Unit				
		38MRDC09AA3	38MRDC12AA1	38MRDC12AA3	38MRDC18AA3	38MRDC24AA3
High Wall	40MHAC09XA3	•				
	40MHAC12XA1		•			
	40MHAC12XA3			•		
	40MHAC18XA3				•	
	40MHAC18XA3					•

Manufacturer reserves the right to discontinue, or change at any time, specification or designs without notice or incurring obligations.



FEATURES

- Available in 115V and 208/230V
- Modes: Cool, Heat, Dry, Fan, Auto
- Turbo mode
- Up-Down / Right-Left louver control (fixed or swing)
- Four fan speeds
- ECO Mode
- Anti-corrosive fin coating

COMPATIBLE WITH

- 38MHRDC & 38MHRCQ
Outdoor Unit Single Zone (p 40)
- 38MGRB & 38MGHB
Outdoor Unit Multi-Zone (p 50)

LEGACY™
LINE

Cooling Only - 40MHHAC

Sizes: 09 / 12 / 18 / 24

Heat Pump - 40MHHAQ

Sizes: 09 / 12 / 18 / 24 / 30 / 36

KEY FEATURES

Improved Serviceability

Full access to the terminal connections and fan after lifting the front cover of the high wall for easy installation and service.

Eco Mode

An intelligent eight-hour night cycle program provides huge energy savings—up to 60%—while maintaining a comfortable sleeping environment.

CONTROLS

Wireless Remote Controller included with indoor unit

Optional Wired Remote Controller
KSACN0101AAA (Timer Function)

Optional Wired Remote Controller KSACN0901AAA
(7-Day Programmable)



Wireless
Remote Controller



Wired Controller
(Timer Function)
KSACN0101AAA



Wired Controller
(7-Day Programmable)
KSACN0901AAA

ACCESSORIES

24V interface for compatibility with
conventional thermostat KSAIC0301230

Wi-Fi® kit size 18 KSAIF0601AAA

SPECIFICATIONS:

40MHHAC High Wall						
Cooling Only						
System						
Size		09	12	12	18	24
Indoor Model		40MHHAC09XA3	40MHHAC12XA1	40MHHAC12XA3	40MHHAC18XA3	40MHHAC24XA3
Electrical						
Voltage-Phase-Cycle	V-Ph-Hz	208/230-1-60	115-1-60	208/230-1-60	208/230-1-60	208/230-1-60
Power Supply						
Indoor Unit Powered From Outdoor Unit						
MCA	A	0.2	0.1	0.27		0.4
Controls						
Wireless Remote Controller (° F / ° C Convertible)		Standard	Standard	Standard	Standard	Standard
Wired Remote Controller (° F / ° C Convertible)		Optional	Optional	Optional	Optional	Optional
24V interface for 3rd Party T-stat		Optional	N/A	Optional	Optional	Optional
Wi-Fi® Control for Phone App Control		Optional	Optional	Optional	Optional	Optional
Operating Range						
Cooling indoor DB Min - Max	° F (° C)	63~90 (17~32)	63~90 (17~32)	63~90 (17~32)	63~90 (17~32)	63~90 (17~32)
Piping						
Pipe Connection Size - Liquid	in (mm)	1/4 (6.35)	1/4 (6.35)	1/4 (6.35)	1/4 (6.35)	3/8 (9.52)
Pipe Connection Size - Suction	in (mm)	3/8 (9.52)	1/2 (12.7)	1/2 (12.7)	1/2 (12.7)	5/8 (15.9)
Indoor Coil						
Face Area	Sq. Ft.	1.66	2.05	2.05	2.71	2.67
No. Rows		2	2	2	2	2
Fins per inch		20	20	20	20	20
Circuits		2	2	2	4	4
Indoor						
Unit Width	in (mm)	28.7 (729)	31.57 (802)	31.57 (802)	38.23 (971)	42.60 (1082)
Unit Height	in (mm)	11.5 (292)	11.61 (295)	11.61 (295)	12.64 (321)	13.27 (337)
Unit Depth	in (mm)	7.87 (200)	7.87 (200)	7.87 (200)	8.98 (228)	9.21 (234)
Net Weight	lbs (kg)	17.37 (7.88)	19.18 (8.7)	18.96 (8.6)	24.69 (11.2)	29.98 (13.6)
Number of Fan Speeds		4	4	4	4	4
Airflow (lowest to highest)	CFM	147/206/246/312	212/253/333/347	194/232/324/347	306/353/471/500	400/471/588/706
Sound Pressure (lowest to highest)	dB(A)	31/32/36	32/36/41	31/36/41	31/38/44	33/41/48
Air Throw Data	ft (m)	22.6 (6.9)	24.3 (7.4)	24.3 (7.4)	26.2 (8)	27.2 (8.3)
Moisture Removal	Pint/h (L/h)	2.0 (0.97)	2.58 (1.22)	2.6 (1.23)	4.5 (2.14)	4.9 (2.34)
Field Drain Pipe Size O.D.	in (mm)	5/8 (16)	5/8 (16)	5/8 (16)	5/8 (16)	5/8 (16)

Performance may vary based on the compatible outdoor units. See respective pages for performance data.

SPECIFICATIONS:

40MHHAQ High Wall									
Heat Pump									
System									
Size		09	12	09	12	18	24	30	36
Indoor Model		40MHHAQ09XA1	40MHHAQ12XA1	40MHHAQ09XA3	40MHHAQ12XA3	40MHHAQ18XA3	40MHHAQ24XA3	40MHHAQ30XA3	40MHHAQ36XA3
Electrical									
Voltage-Phase-Cycle	V-Ph-Hz	115-1-60	115-1-60	208/230-1-60	208/230-1-60	208/230-1-60	208/230-1-60	208/230-1-60	208/230-1-60
Power Supply		Indoor Unit Powered From Outdoor Unit							
MCA	A.	0.31	0.31	0.19	0.19	0.50	0.63	0.63	0.63
Controls									
Wireless Remote Controller (° F / ° C Convertible)		Standard	Standard	Standard	Standard	Standard	Standard	Standard	Standard
Wired Remote Controller (° F / ° C Convertible)		Optional	Optional	Optional	Optional	Optional	Optional	Optional	Optional
Operating Range									
Cooling Indoor DB Min - Max	° F (° C)	63~90 (17~32)	63~90 (17~32)	63~90 (17~32)	63~90 (17~32)	63~90 (17~32)	63~90 (17~32)	63~90 (17~32)	63~90 (17~32)
Heating Indoor DB Min - Max	° F (° C)	32~86 (0~30)	32~86 (0~30)	32~86 (0~30)	32~86 (0~30)	32~86 (0~30)	32~86 (0~30)	32~86 (0~30)	32~86 (0~30)
Piping									
Pipe Connection Size - Liquid	in (mm)	1/4 (6.35)	1/4 (6.35)	1/4 (6.35)	1/4 (6.35)	3/8 (9.52)	3/8 (9.52)	3/8 (9.52)	3/8 (9.52)
Pipe Connection Size - Suction	in (mm)	3/8 (9.52)	1/2 (12.7)	3/8 (9.52)	1/2 (12.7)	5/8 (16)	5/8 (16)	5/8 (16)	5/8 (16)
Indoor									
Unit Width	in (mm)	28.7 (729)	31.57 (802)	28.7 (729)	31.57 (802)	38.23 (971)	42.60 (1082)	49.57 (1259)	49.57 (1259)
Unit Height	in (mm)	11.5 (292)	11.61 (295)	11.5 (292)	11.61 (295)	12.64 (321)	13.27 (337)	14.25 (362)	14.25 (362)
Unit Depth	in (mm)	7.87 (200)	7.87 (200)	7.87 (200)	7.87 (200)	8.98 (228)	9.21 (234)	11.14 (283)	11.14 (283)
Net Weight	lbs (kg)	17.64 (8.0)	18.52 (8.4)	17.64 (8.0)	18.74 (8.5)	24.47 (11.1)	29.98 (13.6)	42.99 (19.5)	42.77 (19.4)
Number of Fan Speeds		4	4	4	4	4	4	4	4
Airflow (lowest to highest)	cfm	137/170/ 239/312	176/241/ 300/341	141/176/ 246/312	156/197/ 291/347	271/329/ 459/550	330/402/ 546/728	380/536/ 702/741	330/447 /753/795
Sound Pressure (lowest to highest)	dB(A)	28/32/36/43	30/36/40/44	27/31/36/43	30/35/40/45	31/38/44/49	32/38/44/51	34/40/44/50	36/38/43/51
Air Throw Data	ft (m)	22.6 (6.9)	24.3 (7.4)	22.6 (6.9)	24.3 (7.4)	26.2 (8.0)	27.2 (8.3)	29.8 (9.1)	31.2 (9.5)
Moisture Removal	Pint/h (L/h)	1.5 (0.69)	2.9 (1.39)	1.5 (0.69)	3.0 (1.47)	3.6 (1.72)	5.3 (2.54)	7.9 (3.73)	10.6 (5.03)
Field Drain Pipe Size O.D.	in (mm)	5/8 (16)	5/8 (16)	5/8 (16)	5/8 (16)	5/8 (16)	5/8 (16)	5/8 (16)	5/8 (16)

Performance may vary based on the compatible outdoor units. See respective pages for performance data.

COMPATIBILITY:

Cooling Only					
Indoor Unit	40MHAC09XA3	40MHAC12XA1	40MHAC12XA3	40MHAC18XA3	40MHAC24XA3
Outdoor Unit Single Zone	38MHRDC09AA3				
		38MHRDC12AA1			
			38MHRDC12AA3		
				38MHRDC18AA3	
					38MHRDC24AA3

COMPATIBILITY:

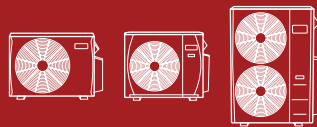
Heat Pump								
Indoor Unit	40MHHAQ09XA1	40MHHAQ12XA1	40MHHAQ09XA3	40MHHAQ12XA3	40MHHAQ18XA3	40MHHAQ24XA3	40MHHAQ30XA3	40MHHAQ36XA3
Outdoor Unit Single Zone	38MHRCQ09AA1							
		38MHRCQ12AA1						
			38MHRCQ09AA3					
				38MHRCQ12AA3				
					38MHRCQ18AA3			
						38MHRCQ24AA3		
							38MHRCQ30AA3	
								38MHRCQ36AA3

Backward compatible with 38MHRQ Single Zone.

Manufacturer reserves the right to discontinue, or change at any time, specification or designs without notice or incurring obligations.

MULTI-ZONE RESIDENTIAL

Multi-zone Ductless



38MGRB & 38MGHB Outdoor Unit

Up to 26.0 SEER2

Up to 10.5 HSPF2

Sizes: 18 / 24HH / 30HH /

36 / 36HH / 48 / 48HH

Multi-zone VRF



38VMB-H Outdoor Unit

Up to 19.2 SEER2

Up to 9.2 HSPF2

Sizes: 36 / 48 / 60

38MGRB & 38MGHB Outdoor Unit

Preferred Series



FEATURES

- Cost competitive
- Auto-restart function
- Quiet outdoor operation, as low as 59 dB(A)
- Anti-corrosive fin coating
- Total zones range from 2 to 5 indoor heads
- Piping length 131–328 ft. (40–100 m)
- Cooling operating range -22° – 122° F (-30° – 50° C)
- Heating operating range -22° – 75° F (-30° – 24° C)

COMPATIBLE WITH

- 619PHB High Wall (p 18)
- 619AHB High Wall (p 24)
- 40MCCAQ One-Way Cassette (p 26)
- 40MBCQ Cassette (p 28)
- 40MBCAQ Cassette (p 30)
- 40MBDQ Ducted (p 32)
- 40MBDAQ High Static Slim Ducted (p 34)
- 40MBAB Air Handler (p 36)
- 40MBFAQ & 40MBFQ Console (p 38)
- 40MHAC & 40MHHAQ High Wall (p 44)

PREFERRED™
SERIES

Heat Pump with Basepan Heater

Inverter Compressor

Sizes: 18 / 24HH / 30HH / 36 / 36HH / 48 / 48HH

Up to 26.0 SEER2

Up to 10.5 HSPF2

Select systems are ENERGY STAR® certified based on indoor unit pairings



KEY FEATURES

Multi-Zone Compatibility

Mix and match up to five indoor units to this outdoor unit to bring customizable comfort to multiple rooms or your whole home.

Improved Performance

With new high-heat models, plus standard heat models, experience high performance in cold climates and temps.

Quiet Operation

A sleek, unobtrusive outdoor unit that's ultra-quiet means less noise pollution and more peaceful outdoor spaces.

SPECIFICATIONS:

38MGRB & 38MGHB Outdoor Unit								
Heat Pump								
System								
Size		18R	24HH	30HH	36R	36HH	48R	48HH
Outdoor Model		38MGRBQ18BA3	38MGHBQ24CA3	38MGHBQ30DA3	38MGRBQ36DA3	38MGHBQ36DA3	38MGRBQ48EA3	38MGHBQ48EA3
Max Number of Zones		2	3	4	4	4	5	5
Operating Range								
Cooling Outdoor DB Min - Max	° F (° C)	5~122 (-15~50)	5~122 (-15~50)	5~122 (-15~50)	5~122 (-15~50)	5~122 (-15~50)	5~122 (-15~50)	5~122 (-15~50)
Heating Outdoor DB Min - Max	° F (° C)	13~75 (-30~24)	-22~75 (-30~24)	-22~75 (-30~24)	13~75 (-30~24)	-22~75 (-30~24)	13~75 (-30~24)	-22~75 (-30~24)
Piping								
Total Piping Length	ft (m)	131 (40)	197 (60)	262 (80)	262 (80)	262 (80)	328 (100)	328 (100)
Piping to furthest FCU	ft (m)	82 (25)	98 (30)	115 (35)	115 (35)	115 (35)	115 (35)	115 (35)
Drop (OD above ID)	ft (m)	49 (15)	49 (15)	49 (15)	49 (15)	65 (20)	65 (20)	65 (20)
Lift (OD below ID)	ft (m)	49 (15)	49 (15)	49 (15)	49 (15)	65 (20)	65 (20)	65 (20)
Pipe Connection Size - Liquid	in (mm)	1/4*2 (6.35*2)	1/4*3 (6.35*3)	1/4*4 (6.35*4)	1/4*4 (6.35*4)	1/4*4 (6.35*4)	1/4*5 (6.35*5)	1/4*5 (6.35*5)
Pipe Connection Size - Suction	in (mm)	3/8*2 (9.52*2)	3/8*3 (9.52*3)	1/2 *1+ 3/8*3 (12.7*1+9.52*3)	1/2 *1+ 3/8*3 (12.7*1+9.52*3)	1/2 *2+ 3/8*2 (12.7*2+9.52*2)	1/2 *2+ 3/8*3 (12.7*2+9.52*3)	1/2 *2+ 3/8*3 (12.7*2+9.52*3)
Refrigerant								
Type		R410A	R410A	R410A	R410A	R410A	R410A	R410A
Charge	lbs (kg)	4.08 (1.85)	5.73 (2.6)	8.38 (3.8)	8.38 (3.8)	10.14 (4.6)	10.14 (4.6)	10.14 (4.6)
Electrical								
Voltage, Phase, Cycle	V/Ph/Hz	208/230-1-60	208/230-1-60	208/230-1-60	208/230-1-60	208/230-1-60	208/230-1-60	208/230-1-60
Power Supply		Indoor unit powered from outdoor unit						
MCA	A.	18	24.5	25	25	40	40	40
Recommended Fuse Size	A.	20	25	30	30	45	45	45
MOCP - Fuse Rating	A.	25	30	40	40	60	60	60
Compressor								
Type		Rotary Inverter	Rotary Inverter	Rotary Inverter	Rotary Inverter	Rotary Inverter	Rotary Inverter	Rotary Inverter
Outdoor								
Unit Width	in (mm)	35.04 (890)	37.24 (946)	37.24 (946)	37.24 (946)	37.48 (952)	37.48 (952)	37.48 (952)
Unit Height	in (mm)	26.50 (673)	31.89 (810)	31.89 (810)	31.89 (810)	52.48 (1333)	52.48 (1333)	52.48 (1333)
Unit Depth	in (mm)	13.46 (342)	16.14 (410)	16.14 (410)	16.14 (410)	16.34 (415)	16.34 (415)	16.34 (415)
Net Weight	lbs (kg)	100.31 (45.5)	139.77 (63.4)	169.09 (76.7)	169.09 (76.7)	223.1 (101.2)	225.5 (102.3)	238.32 (108.1)
Airflow	CFM	1,765	2,129	2,147	2,147	4,500	4,500	4,500
Sound Pressure	dB(A)	59	61	63	63	64	64	65

PERFORMANCE:

Non-Ducted								
Size		18R	24HH	30HH	36R	36HH	48R	48HH
Outdoor Model		38MGRBQ18BA3	38MGHBQ24CA3	38MGHBQ30DA3	38MGRBQ36DA3	38MGHBQ36DA3	38MGRBQ48EA3	38MGHBQ48EA3
Max Number of Zones		2	3	4	4	4	5	5
ENERGY STAR®		YES	YES	YES	NO	YES	YES	NO
Cooling System Tons		1.5	2.0	2.5	3.0	3.0	4.0	4.0
Cooling Rated Capacity	Btu/h	18,000	24,000	30,000	36,000	36,000	48,000	48,000
Cooling Cap. Range Min - Max	Btu/h	5,650~22,000	9,573~32,100	9,429~40,800	8,209~40,555	17,900~42,000	19,000~50,000	19,300~51,000
SEER2		22.9	24.6	26.0	23.9	22.2	23.4	21.8
EER2		13.9	13.4	13.0	11.7	13.6	12.5	11.7
Heating Rated Capacity (47° F)	Btu/h	19,000	25,000	30,000	37,000	36,500	48,000	49,000
Heating Maximum Capacity (5° F)	Btu/h	12,400	23,000	29,400	23,900	36,000	36,000	48,000
Heating Cap. Range Min - Max	Btu/h	5,050~24,400	8,439~33,930	8,118~41,400	8,008~44,632	12,500~49,000	12,500~52,000	11,500~58,000
HSPF2		10.5	10.0	9.8	9.5	10.3	8.7	9.8
COP (47° F)	W/W	3.92	4.10	3.81	3.61	3.85	3.60	3.59
COP (5° F) - Maximum	W/W	1.75	1.75	1.90	1.75	1.75	1.75	2.00

PERFORMANCE:

Ducted								
Size		18R	24HH	30HH	36R	36HH	48R	48HH
Outdoor Model		38MGRBQ18BA3	38MGHBQ24CA3	38MGHBQ30DA3	38MGRBQ36DA3	38MGHBQ36DA3	38MGRBQ48EA3	38MGHBQ48EA3
Max Number of Zones		2	3	4	4	4	5	5
ENERGY STAR®		NO	YES	NO	NO	NO	NO	NO
Cooling System Tons		1.5	2.0	2.5	3.0	3.0	4.0	4.0
Cooling Rated Capacity	Btu/h	18,000	24,000	30,000	36,000	36,000	48,000	48,000
Cooling Cap. Range Min - Max	Btu/h	3,850~22,400	6,193~30,697	8,124~38,500	8,789~40,288	17,400~44,000	19,400~51,000	18,500~51,000
SEER2		19.0	21.3	20.0	20.0	19.0	20.5	20.9
EER2		12.0	12.5	12.0	11.0	11.7	10.8	11.7
Heating Rated Capacity (47° F)	Btu/h	19,000	24,000	30,000	37,000	37,000	50,000	50,000
Heating Maximum Capacity (5° F)	Btu/h	13,000	21,500	28,600	24,000	36,000	36,000	48,000
Heating Cap. Range Min - Max	Btu/h	4,350~25,800	7,394~33,700	6,652~43,200	6,900~46,624	13,300~47,000	15,500~56,000	12,000~59,000
HSPF2		9.8	9.7	9.2	9.2	10.0	9.7	8.9
COP (47° F)	W/W	3.80	3.81	3.81	3.60	3.74	3.57	3.86
COP (5° F) - Maximum	W/W	1.75	1.95	1.85	1.68	1.80	1.80	1.85

PERFORMANCE:

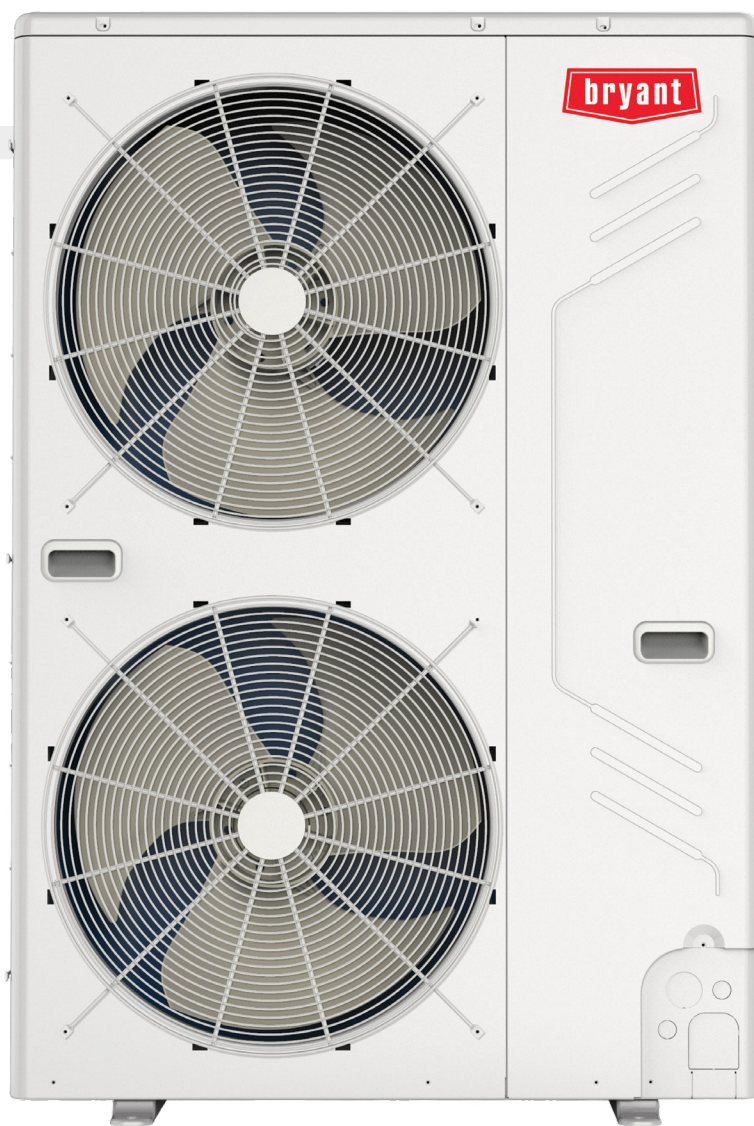
Mixed Ducted and Non-Ducted								
Size		18R	24HH	30HH	36R	36HH	48R	48HH
Outdoor Model		38MGRBQ18BA3	38MGHBQ24CA3	38MGHBQ30DA3	38MGRBQ36DA3	38MGHBQ36DA3	38MGRBQ48EA3	38MGHBQ48EA3
Max Number of Zones		2	3	4	4	4	5	5
ENERGY STAR®		YES	YES	NO	NO	YES	NO	NO
Cooling System Tons		1.5	2.0	2.5	3.0	3.0	4.0	4.0
Cooling Rated Capacity	Btu/h	18,000	24,000	30,000	36,000	36,000	48,000	48,000
Cooling Cap. Range Min - Max	Btu/h	4,750~22,200	7,883~31,399	8,777~39,650	8,499~40,422	17,500~43,000	19,200~50,500	18,900~51,000
SEER2		20.95	22.95	23.0	21.95	20.6	21.95	21.35
EER2		12.95	12.95	12.5	11.35	12.65	11.65	11.7
Heating Rated Capacity (47° F)	Btu/h	19,000	24,500	30,000	37,000	36,750	49,000	49,500
Heating Maximum Capacity (5° F)	Btu/h	12,700	22,000	29,000	23,900	36,000	36,000	48,000
Heating Cap. Range Min - Max	Btu/h	4,700~25,100	7,917~33,815	7,385~42,300	7,454~45,628	12,900~48,000	14,000~54,000	11,750~58,500
HSPF2		10.15	9.85	9.5	9.35	10.15	9.2	9.35
COP (47° F)	W/W	3.86	3.96	3.81	3.61	3.80	3.59	3.73
COP (5° F) - Maximum	W/W	1.75	1.85	1.88	1.72	1.80	1.80	1.90

Manufacturer reserves the right to discontinue, or change at any time, specification or designs without notice or incurring obligations.

VRF Summary

Ideal for light commercial or large residential applications, a Bryant VRF Single-Phase Heat Pump system delivers the efficiency, flexibility and control of VRF, but in a smaller capacity package and with a lower power requirement. The system allows for a long line length between the outdoor and indoor units, offering more options for installation between floors of your home. It utilizes the centralized controls network with an expanded line of indoor unit styles.

38VMB-H



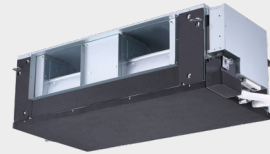
Outdoor Unit



40VMW
High Wall Unit



40VML
Low Static Ducted
(Slim Profile)



40VMH
High Static Ducted



40VMR
Floor Console (Recessed)



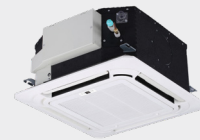
40VMM
Medium Static Ducted



40VMU
Underceiling
Floor Console (Exposed)



40VMF
4-Way Cassette



40VMC
Compact 4-Way Cassette



40VMV
Vertical AHU



40VMI
One-Way Compact Cassette

Compatible indoor units

38VMB-H Outdoor Unit

Evolution System



FEATURES

- 208/230V-1-60Hz power supply
- Connect up to nine indoor units on a 5-ton system
- High-performance outdoor unit with inverter-driven scroll compressor
- Cooling operating range 5° F ~ 118° F
- Heating operating range -13° F ~ 64° F
- Maximum capacity of combined indoor units 50% to 130%
- Quiet outdoor operation, as low as 58.7 dB(A) for the 3-ton system

COMPATIBLE WITH

- 40VMW High Wall Unit
- 40VMC Compact 4-Way Cassette
- 40VMF 4-Way Cassette
- 40VML Low Static Ducted (Slim Profile)
- 40VMM Medium Static Ducted
- 40VMR Floor Console (Recessed)
- 40VMU Underceiling Unit – Floor Console (Exposed)
- 40VMV Air Handler
- 40VMH High Static Ducted (sizes 72 and 96 are not compatible)
- 40VMI One Way Cassette

VRF Single-Phase Heat Pump

Inverter-driven Compressor

Up to 19.2 SEER2

Up to 9.2 HSPF2

Sizes: 3, 4 and 5 tons

KEY FEATURES

The Bryant 38VMB-H VRF heat pump system is a combination of an outdoor unit with multiple-style indoor units connected by refrigerant piping and wiring. The outdoor units have stacked dual-condenser fan with side-blow arrangement.

For more information about Bryant VRF offerings, please reference the Bryant VRF catalog available on HVACpartners.com or see your Bryant distributor.

EVOLUTION™
SYSTEM

SPECIFICATIONS:

38VMB-H Outdoor Unit						
Single-Phase Heat Pump						
Outdoor Unit Model Name			38VMB036HDS3-1	38VMB048HDS3-1	38VMB060HDS3-1	
Nominal Tons		Ton	3	4	5	
Cooling Capacity ¹ (With Non-Ducted Indoor Units/Ducted)	Nominal	kBtu/h	36	48	60	
	Rated	kBtu/h	36	48	60	
Heating Capacity ¹ (With Non-Ducted Indoor Units/Ducted)	Nominal	kBtu/h	40	52.5	66	
	Rated	kBtu/h	40	52.5	66	
With Non-Ducted Indoor Units Electrical Characteristics (Nominal) ¹	Power Supply ²		208/230V, 1-Phase, 60Hz			
	Cooling	Power Consumption	kW	3.1	4.6	6.1
		SEER2 (Seasonal Energy Efficiency Ratio)	Btu/W	19.2	19.0	18.6
	Heating	Power Consumption	kW	3.1	4.3	5.8
		HSPF2 (Heating Seasonal Performance Factor)	Btu/W	9.2	8.9	8.7
With Ducted Indoor Units Electrical Characteristics (Nominal) ¹	Power Supply ²		208/230V, 1-Phase, 60Hz			
	Cooling	Power Consumption	kW	2.9	4.7	6.1
		SEER2 (Seasonal Energy Efficiency Ratio)	Btu/W	17.3	17.0	15.9
	Heating	Power Consumption	kW	3.0	4.2	5.7
		HSPF2 (Heating Seasonal Performance Factor)	Btu/W	9.1	8.5	8.0
External Dimensions	Height	in	52-1/4			
	Width	in	35-1/2			
	Depth	in	15-3/4			
Total Weight	Unit	lbs	220			
Compressor	Type / Qty		Inverter-driven Hermetic Rotary/1			
Fan Unit	Air volume	cfm	4,100			
Refrigerant ³ (Charged refrigerant amount)		lbs	8.6			
Electrical Specifications	Unit	MCA ⁴	A	36	38	40
		Recommended Fuse Size	A	40	40	45
Refrigerant Piping	Connecting Port Diameter	Gas Side (Main Pipe) (Brazing)	in	5/8		3/4
		Liquid Side (Main Pipe) (Brazing)	in	3/8		
Operation Temperature Range	Cooling	° F DB	-5 to 118			
	Heating	° F WB	-5 to 64			
Number Of Connected Indoor Units			5	7	9	
Maximum Capacity Of Combined Indoor Units			50% to 130%			
Sound Pressure Level Cooling/Heating ⁵		dB(A)	58.7	60.1	60.7	

¹ Rated conditions

Cooling: Indoor air temperature 80° F dry bulb / 67° F wet bulb, outdoor air temperature 95° F dry bulb.

Heating: Indoor air temperature 70° F dry bulb, outdoor air temperature 47° F dry bulb / 43° F wet bulb.

² The source voltage must not fluctuate more than ± 10%.

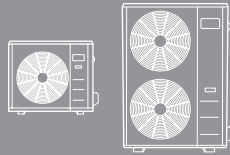
³ The amount does not consider extra piping length. Refrigerant must be added on site in accordance with the actual piping length.

⁴ Select wire size based on larger value of MCA: Minimum Circuit Amps (Minimum Circuit Amps required for power supply design).

⁵ These values, measured in anechoic chamber, at a point 3.3 ft. (1m) in front of the unit at a height of 4.6 ft. (1.4m).

Manufacturer reserves the right to discontinue, or change at any time, specification or designs without notice or incurring obligations.

LIGHT COMMERCIAL



38MBRC Outdoor Unit

Up to 19.8 SEER2

Up to 10.2 HSPF2

Sizes: 36 / 48 / 58



40MBCAQ Cassette

Sizes: 36 / 48



40MBDQ Ducted

Sizes: 36 / 48 / 58



40MBDAQ High Static Slim Ducted

Sizes: 36 / 48 / 58



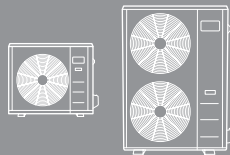
40MBFQ Console

Sizes: 36 / 48 / 58



40MBAB Air Handler

Sizes: 36 / 48 / 60



38MURA Outdoor Unit

Up to 18.0 SEER2

Up to 10.0 HSPF2

Sizes: 18 / 24 / 30 / 36 / 48 / 60



40MUAA Air Handler

Sizes: 18 / 24 / 30 / 36 / 48 / 60

38MBRC Outdoor Unit

Preferred Series



36K



48K / 58K

FEATURES

- Variable speed compressor
- High-efficiency ECM fan motor
- Factory installed basepan heater
- Factory installed crankcase heater
- Low voltage controls
- Auto-restart function
- Condenser high-temperature protection
- Quiet operation
- Anti-corrosive fin coating

COMPATIBLE WITH

- 40MBCAQ Cassette (p 64)
- 40MBDQ Ducted (p 66)
- 40MBDAQ High Static Slim Ducted (p 68)
- 40MBFQ Console (p 70)
- 40MBAB Air Handler (p 72)

PREFERRED™
SERIES

Outdoor Heat Pump Unit

Inverter Compressor

Up to 19.8 SEER2

Up to 10.2 HSPF2

Sizes: 36 / 48 / 58

KEY FEATURES

Premium Efficiency

Enjoy increased energy savings with a unit equipped with inverter technology that delivers first-rate comfort and efficiency.

Simple Maintenance

With convenient access to the control compartment through both top and side panels, this outdoor unit makes servicing and maintenance a breeze.

SPECIFICATIONS:

38MBRC Outdoor Unit				
Heat Pump				
System				
Size		36K	48K	58K
Outdoor Model		38MBRCQ36AA3	38MBRCQ48AA3	38MBRCQ58AA3
Electrical				
Voltage-Phase-Cycle	V-Ph-Hz	208/230-1-60	208/230-1-60	208/230-1-60
MCA	A.	30	35	35
MOCP - Fuse Rating	A.	50	50	50
Operating Range				
Cooling Outdoor DB Min - Max	° F (° C)	-22~130 (-30~55)	-22~130 (-30~55)	-22~130 (-30~55)
Heating Outdoor DB Min - Max	° F (° C)	-22~86 (-30~30)	-22~86 (-30~30)	-22~86 (-30~30)
Piping				
Total Piping Length	ft (m)	213 (65)	213 (65)	213 (65)
Piping Lift*	ft (m)	98 (30)	98 (30)	98 (30)
Pipe Connection Size - Liquid	in (mm)	3/8 (9.52)	3/8 (9.52)	3/8 (9.52)
Pipe Connection Size - Suction	in (mm)	5/8 (16)	5/8 (16)	7/8 (22)
Refrigerant				
Type		R410A	R410A	R410A
Charge	lbs (kg)	6.72 (3.05)	9.26 (4.2)	10.58 (4.8)
Compressor				
Type		Rotary Inverter	Rotary Inverter	Rotary Inverter
Dimensions				
Unit Width	in (mm)	37.24 (946)	37.48 (952)	37.48 (952)
Unit Height	in (mm)	31.89 (810)	52.48 (1333)	52.48 (1333)
Unit Depth	in (mm)	16.14 (410)	16.34 (415)	16.34 (415)
Net Weight	lbs (kg)	148.59 (67.4)	219.14 (99.4)	217.15 (98.5)
Airflow	CFM	2,130	4,500	4,500
Sound Pressure	dB(A)	63	62.5	61.2

*Condensing unit above or below indoor unit.

COMPATIBILITY:

Indoor Unit		Outdoor Unit		
		38MBRCQ36AA3	38MBRCQ48AA3	38MBRCQ58AA3
Air Handler	40MBABQ36XA3	•		
	40MBABQ48XA3		•	
	40MBABQ60XA3			•
Cassette	40MBCAQ36XA3	•		
	40MBCAQ48XA3		•	
Console	40MBFQ36---3	•		
	40MBFQ48---3		•	
	40MBFQ58---3			•
Ducted	40MBDQ36---3	•		
	40MBDQ48---3		•	
	40MBDQ58---3			•
High Static Slim Ducted	40MBDAQ36XH3	•		
	40MBDAQ48XH3		•	
	40MBDAQ58XH3			•

PERFORMANCE:

40MBAB Air Handler				
Size		36K	48K	60K
Indoor Model		40MBABQ36XA3	40MBABQ48XA3	40MBABQ60XA3
Cooling System Tons		3.0	4.0	4.8
Cooling Rated Capacity	Btu/h	36,000	48,000	57,000
Cooling Cap. Range Min - Max	Btu/h	11,600-41,000	11,800~51,900	11,000~60,000
SEER2		15.4	15.3	16.0
EER2		8.2	8.2	9.6
Heating Rated Capacity (47° F)	Btu/h	38,000	55,000	60,000
Heating Rated Capacity (17° F)	Btu/h	25,600	37,500	34,000
Heating Maximum Capacity (17° F)	Btu/h	27,000	37,500	34,600
Heating Maximum Capacity (5° F)	Btu/h	22,000	31,000	33,000
Heating Cap. Range Min - Max	Btu/h	9,200-43,000	11,900~58,000	12,000~60,400
HSPF2		9.0	9.2	8.5
COP (47° F)	W/W	3.35	3.03	3.2
COP (17° F)	W/W	2.61	2.46	2.52
COP (5° F)	W/W	1.9	1.75	1.81

PERFORMANCE:

40MBCAQ Cassette			
Size		36K	48K
Indoor Model		40MBCAQ36XA3	40MBCAQ48XA3
Cooling System Tons		3.0	4.0
Cooling Rated Capacity	Btu/h	36,000	48,000
Cooling Cap. Range Min - Max	Btu/h	12,400~36,000	16,600~48,000
SEER2		19.2	18.5
EER2		9.4	9.5
Heating Rated Capacity (47° F)	Btu/h	38,000	50,000
Heating Rated Capacity (17° F)	Btu/h	23,000	28,000
Heating Maximum Capacity (17° F)	Btu/h	25,300	37,900
Heating Maximum Capacity (5° F)	Btu/h	22,300	30,200
Heating Cap. Range Min - Max	Btu/h	11,200~38,000	11,850~52,000
HSPF2		8.8	9.8
COP (47° F)	W/W	3.01	3.1
COP (17° F)	W/W	1.9	1.8
COP (5° F)	W/W	2.02	1.92

PERFORMANCE:

40MBFQ Console				
Size		36K	48K	58K
Indoor Model		40MBFQ36---3	40MBFQ48---3	40MBFQ58---3
Cooling System Tons		3.0	4.0	4.5
Cooling Rated Capacity	Btu/h	36,000	48,000	54,000
Cooling Cap. Range Min - Max	Btu/h	11,400~36,000	15,800~48,000	15,000~54,000
SEER2		19.0	18.9	19.8
EER2		8.5	9.3	9.8
Heating Rated Capacity (47° F)	Btu/h	38,000	50,000	60,000
Heating Rated Capacity (17° F)	Btu/h	23,000	29,000	35,000
Heating Maximum Capacity (17° F)	Btu/h	23,000	29,000	35,000
Heating Maximum Capacity (5° F)	Btu/h	22,000	28,000	30,000
Heating Cap. Range Min - Max	Btu/h	11,400~38,000	12,000~50,000	17,000~62,000
HSPF2		9.0	10.0	9.0
COP (47° F)	W/W	2.8	2.5	3
COP (17° F)	W/W	2.34	2.52	2.49
COP (5° F)	W/W	1.8	1.95	1.9

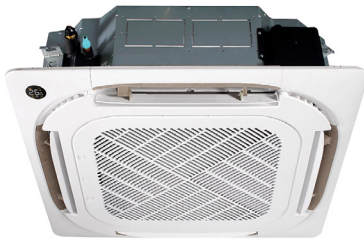
PERFORMANCE:

40MBDQ Ducted				
Size		36K	48K	58K
Indoor Model		40MBDQ36---3	40MBDQ48---3	40MBDQ58---3
Cooling System Tons		3.0	4.0	4.8
Cooling Rated Capacity	Btu/h	36,000	48,000	57,000
Cooling Cap. Range Min - Max	Btu/h	5,900~36,000	12,000~48,000	13,000~59,000
SEER2		15.8	15.1	17.0
EER2		8.8	8.5	10.3
Heating Rated Capacity (47° F)	Btu/h	40,000	50,000	60,000
Heating Rated Capacity (17° F)	Btu/h	27,000	29,000	35,400
Heating Maximum Capacity (17° F)	Btu/h	25,000	29,000	35,400
Heating Maximum Capacity (5° F)	Btu/h	22,000	32,000	35,000
Heating Cap. Range Min - Max	Btu/h	12,700~40,000	11,600~50,000	12,000~61,000
HSPF2		8.8	9.3	8.4
COP (47° F)	W/W	3.37	3	3.5
COP (17° F)	W/W	2.63	2.57	2.5
COP (5° F)	W/W	1.9	1.95	2.01

PERFORMANCE:

40MBDAQ High Static Slim Ducted				
Size		36K	48K	58K
Indoor Model		40MBDAQ36---3	40MBDAQ48---3	40MBDAQ58---3
Cooling System Tons		3.00	4.00	4.92
Cooling Rated Capacity	Btu/h	36,000	48,000	59,000
Cooling Cap. Range Min - Max	Btu/h	8,900-37,000	10,500-48,800	12,000-62,000
SEER2		16.0	15.2	17.0
EER2		9.2	8.8	10.3
Heating Rated Capacity (47° F)	Btu/h	39,500	50,000	60,000
Heating Rated Capacity (17° F)	Btu/h	26,200	35,000	34,400
Heating Maximum Capacity (17° F)	Btu/h	26,400	35,600	31,000
Heating Maximum Capacity (5° F)	Btu/h	26,400	40,000	36,000
Heating Cap. Range Min - Max	Btu/h	12,800-42,000	11,000-55,600	12,000-60,000
HSPF2		10.2	9.7	8.4
COP (47° F)	W/W	3.18	3.19	3.52
COP (17° F)	W/W	2.52	2.36	2.46
COP (5° F)	W/W	2.08	1.93	2.00

Manufacturer reserves the right to discontinue, or change at any time, specification or designs without notice or incurring obligations.



Sizes: 36 / 48

Select sizes are ENERGY STAR® certified based on outdoor unit pairings



FEATURES

- Modes: Cool, Heat, Dry, Fan, Auto, Turbo
- Louver control (fixed or swing)
- Outside air intake
- Built-in condensate lift pump
- *Follow Me* (senses temperature at handheld remote)
- Heating setback (46° F Heating Mode)
- Quiet indoor operation
- Anti-corrosive fin coating

COMPATIBLE WITH

- 38MBRC Outdoor Unit (p 60)

PREFERRED™
SERIES

KEY FEATURES

Easier Service & Installation

The cassette is supplied with a condensate lift pump that is capable of lifting the water 29.5in. (750mm.) above the top of the unit.

Seamless Connection

Optimized Wi-Fi® connectivity means fewer installation steps for faster, more seamless connections.

Enhanced Design

A new, ergonomic design and larger vents for improved airflow means greater comfort from an unobtrusive indoor unit.

CONTROLS

Wireless Remote Controller included with indoor unit

Optional Wired Remote Controller
KSACN0701AAA (7-Day Programmable)



Wireless Remote Controller



Optional Wired Remote Controller
(7-Day Programmable)
KSACN0701AAA

ACCESSORIES

24V interface for compatibility with conventional thermostat
KSAIC0301230

Wi-Fi® kit KSAIF0401AAA

SPECIFICATIONS:

40MBCAQ Cassette			
Heat Pump System			
Size		36	48
Indoor Model		40MBCAQ36XA3	40MBCAQ48XA3
Electrical			
Voltage-Phase-Cycle	V-Ph-Hz	208/230-1-60	208/230-1-60
Power Supply		Indoor Unit Powered From Outdoor Unit	
MCA	A.	1.0	1.5
Controls			
Wireless Remote Controller (° F / ° C Convertible)		Standard	Standard
Wired Remote Controller (° F / ° C Convertible)		Optional	Optional
Operating Range			
Cooling Indoor DB Min - Max	° F (° C)	60.8~90 (16~32)	60.8~90 (16~32)
Heating Indoor DB Min - Max	° F (° C)	32~86 (0~30)	32~86 (0~30)
Piping			
Pipe Connection Size - Liquid	in (mm)	3/8 (9.52)	3/8 (9.52)
Pipe Connection Size - Suction	in (mm)	5/8 (15.9)	5/8 (15.9)
Indoor			
Body Unit Width	in (mm)	32.68 (830)	32.68 (830)
Body Unit Height	in (mm)	9.65 (245)	11.3 (287)
Body Unit Depth	in (mm)	32.68 (830)	32.68 (830)
Body Net Weight	lbs (kg)	59.97 (27.2)	64.59 (29.3)
Panel Unit Width	in (mm)	37.4 (950)	37.4 (950)
Panel Unit Height	in (mm)	2.17 (55)	2.17 (55)
Panel Unit Depth	in (mm)	37.4 (950)	37.4 (950)
Panel Net Weight	lbs (kg)	11.02 (5)	11.02 (5)
Number of Fan Speeds		4	4
Airflow (lowest to highest)	CFM	753/853/947/1041	935/1059/1171/1288
Sound Pressure (lowest to highest)	dB(A)	46/49/51/53	49/52/54/56
Air Throw Data	ft (m)	16.4 (5)	16.4 (5)
Moisture Removal	Pint/h (L/h)	8.5 (4.0)	12.3 (5.8)
Field Drain Pipe Size O.D.	in (mm)	1 (25.4)	1 (25.4)

Performance may vary based on the Outdoor unit matched to. See compatible Outdoor Units pages for Performance Data

COMPATIBILITY:

Indoor Unit	40MBCAQ36XA3	40MBCAQ48XA3
Outdoor Unit	38MBRCQ36AA3	38MBRCQ48AA3

Manufacturer reserves the right to discontinue, or change at any time, specification or designs without notice or incurring obligations.



36K / 48K



58K

FEATURES

- Available in 208/230V
- Modes: Cool, Heat, Dry, Fan, Auto
- Vertical (sizes 36 & 48) or horizontal installation
- External static pressures of 0.80 in W.C.
- Rear or bottom return
- Constant CFM operation on sizes 36 and 48
- Built-in condensate lift pump
- *Follow Me* (senses temperature at the handheld remote)
- Heating setback (46° F Heating Mode)
- Quiet indoor operation, as low as 38.5 dB(A)
- Anti-corrosive fin coating

COMPATIBLE WITH

- 38MBRC Outdoor Unit (p 60)

PREFERRED™
SERIES

Sizes: 36 / 48 / 58

KEY FEATURES

Vertical or Horizontal Installation

Designed for maximum installation flexibility with the built-in secondary drain pan which allows the unit to be mounted vertically for either a floor or ceiling-concealed installation depending on existing conditions for sizes 36 and 48 only.

Built-In Condensate Lift Pump

Supplied with a condensate lift pump capable of lifting water (maximum amount 29.5 in (750 mm.)) above the top of the unit.

CONTROLS

Wireless Remote Controller included with indoor unit

Wired Remote Controller KSACN0701AAA
(7-Day Programmable)



Wireless Remote
Controller



Wired Controller
(7-Day Programmable)
KSACN0701AAA

ACCESSORIES

24V interface for compatibility with conventional thermostat
KSAIC0301230

Wi-Fi® kit KSAIF0401AAA

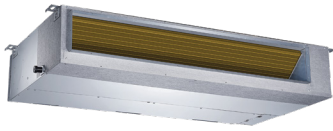
SPECIFICATIONS:

40MBDQ Ducted				
Heat Pump System				
Size		36	48	58
Indoor Model		40MBDQ36---3	40MBDQ48---3	40MBDQ58---3
Electrical				
Voltage-Phase-Cycle	V-Ph-Hz	208/230-1-60	208/230-1-60	208/230-1-60
Power Supply		Indoor Unit Powered From Outdoor Unit		
MCA	A.	2.45	3.2	3.65
Operating Range				
Cooling Indoor DB Min - Max	° F (° C)	63~90 (17~32)	63~90 (17~32)	63~90 (17~32)
Heating Indoor DB Min - Max	° F (° C)	32~86 (0~30)	32~86 (0~30)	32~86 (0~30)
Piping				
Pipe Connection Size - Liquid	in (mm)	3/8 (9.52)	3/8 (9.52)	3/8 (9.52)
Pipe Connection Size - Suction	in (mm)	5/8 (16)	5/8 (16)	3/4 (19)
Indoor				
Unit Width	in (mm)	53.54 (1,360)	47.24 (1,200)	55.12 (1,400)
Unit Height	in (mm)	9.8 (249)	11.81 (300)	17.32 (440)
Unit Depth	in (mm)	30.47 (774)	34.41 (874)	33.78 (858)
Net Weight	lbs (kg)	106.48 (48.3)	119.71 (54.3)	163 (74)
Number of Fan Speeds		3	3	3
Airflow (lowest to highest)	CFM	700/910/1,080	720/1,030/1,230	1,260/1,710/2,150
Sound Pressure (lowest to highest)	dB(A)	38.5/42/45.5	46/49.5/50.5	51/54/57
Max Static Pressure	in W.C.	0.64	0.64	0.80
Field Drain Pipe Size O.D.	in (mm)	1 (25.4)	1 (25.4)	1 (25.4)

COMPATIBILITY:

Indoor Unit	40MBDQ36---3	40MBDQ48---3	40MBDQ58---3
Outdoor Unit	38MBRCQ36AA3	38MBRCQ48AA	38MBRCQ58AA3

Manufacturer reserves the right to discontinue, or change at any time, specification or designs without notice or incurring obligations.



36K / 48K



58K

FEATURES

- Vertical or horizontal installation (Except 58K)
- External static pressures of up to 0.80 in W.C.
- Constant air volume control
- Modes: Cool, Heat, Dry, Fan, Auto
- Rear or bottom return
- Outside air intake
- Built-in condensate lift pump
- *Follow Me* (senses temperature at handheld remote)
- Quiet indoor operation, as low as 35 dB(A)

COMPATIBLE WITH

- 38MBRC Outdoor Unit (p 60)

PREFERRED
SERIES

Sizes: 36 / 48 / 58

KEY FEATURES

Discrete Design

A slim duct design, recessed installation and exterior connection via flexible refrigerant tubing allows this unit to integrate seamlessly into existing architecture and new construction.

Improved Indoor Air Quality

Each unit comes equipped with a washable, reusable filter for simple, cost-effective servicing. And with the ability to accommodate filters rated up to MERV 13, customers can benefit from the gold standard in indoor air quality technology without sacrificing performance or efficiency.

CONTROLS

Wireless Remote Controller included with indoor unit

Wired Remote Controller with Timer Function
KSACN0101AAA

Wired Remote Controller KSACN0701AAA
(7-Day Programmable)



Wireless Remote
Controller



Wired Controller
(Timer Function)
KSACN0101AAA



Wired Controller
(7-Day Programmable)
KSACN0701AAA

ACCESSORIES

Wi-Fi® kit KSAIF0401AAA

24V interface kit 230V KSAIC0301230

SPECIFICATIONS:

40MBDAQ High Static Slim Ducted				
Heat Pump				
System				
Size		36	48	58
Indoor Model		40MBDAQ36XH3	40MBDAQ48XH3	40MBDAQ58XH3
Electrical				
Voltage-Phase-Cycle	V-Ph-Hz	208/230-1-60	208/230-1-60	208/230-1-60
Power Supply		Indoor Unit Powered From Outdoor Unit		
MCA	A.	3.0	4.0	5.0
Controls				
Wireless Remote Controller (° F / ° C Convertible)		Standard	Standard	Standard
Wired Remote Controller (° F / ° C Convertible)		Standard	Standard	Standard
24V interface for 3rd Part Thermostat Control		Optional	Optional	Optional
Wi-Fi® Control for Phone App Control		Optional	Optional	Optional
Operating Range				
Cooling Indoor DB Min - Max	° F (° C)	62~90 (16~32)	62~90 (16~32)	62~90 (16~32)
Heating Indoor DB Min - Max	° F (° C)	59~84 (15~29)	59~84 (15~29)	59~84 (15~29)
Piping				
Pipe Connection Size - Liquid	in (mm)	3/8 (9.52)	3/8 (9.52)	3/8 (9.52)
Pipe Connection Size - Suction	in (mm)	5/8 (16)	5/8 (15.9)	7/8 (22)
Indoor				
Unit Width	in (mm)	47.24 (1200)	47.24 (1200)	55.12 (1400)
Unit Height	in (mm)	11.81 (300)	11.81 (300)	18.11 (460)
Unit Depth	in (mm)	34.41 (874)	34.41 (874)	33.78 (858)
Net Weight	lbs (kg)	106.48 (48.3)	119.71 (54.3)	163 (74)
Number of Fan Speeds		3	3	3
Airflow (lowest to highest)	CFM	1000/1235/1588	1059/1588/1882	1262/1709/2156
Sound Pressure (lowest to highest)	dB(A)	36/41/45	45/51/54	50/53/57
Max Static Pressure	in W.C.	0.8	0.8	0.8
Field Drain Pipe Size O.D.	in (mm)	1.0 (25.4)	1.0 (25.4)	1.0 (25.4)

COMPATIBILITY:

Indoor Unit	40MBDAQ36XH3	40MBDAQ48XH3	40MBDAQ58XH3
Outdoor Unit	38MBRCQ36AA3	38MBRCQ48AA3	38MBRCQ58AA3

Manufacturer reserves the right to discontinue, or change at any time, specification or designs without notice or incurring obligations.



Sizes: 36 / 48 / 58

FEATURES

- Available in 208/230V
- Modes: Cool, Heat, Dry, Fan, Auto
- Auto-restart function
- Install on the floor or in the ceiling
- Louver control (fixed or swing)
- Three fan speeds
- *Follow Me* (senses temperature at the handheld remote)
- Heating setback (46° F Heating Mode)
- Quiet indoor operation, as low as 43 dB(A)
- Anti-corrosive fin coating

COMPATIBLE WITH

- 38MBRC Outdoor Unit

(p 60)

PREFERRED™
SERIES

KEY FEATURES

Outside Air Intake

Outside air can be brought into the room through the connection available on the indoor unit, which helps meet the ventilation requirements.

Flexible Installation

Install the unit on the floor or in the ceiling, depending on the application.

CONTROLS

Wireless Remote Controller included with indoor unit
Optional Wired Remote Controller KSACN0701AAA
(7-Day Programmable)



Wireless Remote Controller



Wired Remote Controller
KSACN0701AAA
(7-Day Programmable)

ACCESSORIES

24V interface for compatibility with conventional thermostat
KSAIC0301230

Wi-Fi® kit KSAIF0401AAA

SPECIFICATIONS:

40MBFQ Console				
Heat Pump System				
Size		36	48	58
Indoor Model		40MBFQ36---3	40MBFQ48---3	40MBFQ58---3
Electrical				
Voltage-Phase-Cycle	V-Ph-Hz	208/230-1-60	208/230-1-60	208/230-1-60
Power Supply		Indoor Unit Powered From Outdoor Unit		
MCA	A.	1.23	0.85	1.48
Operating Range				
Cooling Indoor DB Min - Max	° F (° C)	63~90 (17~32)	63~90 (17~32)	63~90 (17~32)
Heating Indoor DB Min - Max	° F (° C)	32~86 (0~30)	32~86 (0~30)	32~86 (0~30)
Piping				
Pipe Connection Size - Liquid	in (mm)	3/8 (9.52)	3/8 (9.52)	3/8 (9.52)
Pipe Connection Size - Suction	in (mm)	5/8 (16)	5/8 (16)	3/4 (19)
Indoor				
Unit Width	in (mm)	50.59 (1,285)	64.96 (1,650)	64.96 (1,650)
Unit Height	in (mm)	9.25 (235)	9.25 (235)	9.25 (235)
Unit Depth	in (mm)	26.57 (675)	26.57 (675)	26.57 (675)
Net Weight	lbs (kg)	69 (31.3)	83.78 (38)	110 (50)
Number of Fan Speeds		3	3	3
Airflow (lowest to highest)	CFM	638/917/1,037	1,000/1,120/1,350	796/1,029/1,385
Sound Pressure (lowest to highest)	dB(A)	43/49/54	52/54/57	46/49/55
Air Throw Data	ft (m)	33 (10)	39 (12)	39 (12)
Field Drain Pipe Size O.D.	in (mm)	1 (25.4)	1 (25.4)	1 (25.4)

COMPATIBILITY:

Indoor Unit	40MBFQ36---3	40MBFQ48---3	40MBFQ58---3
Outdoor Unit	38MBRCQ36A--3	38MBRCQ48A--3	38MBRCQ58A--3

Manufacturer reserves the right to discontinue, or change at any time, specification or designs without notice or incurring obligations.



FEATURES

- Modes: Cool, Heat, Dry, Fan, Auto
- 4-way installation (Upflow, Downflow, Right, Left)
- New aluminum coil
- Automatic Airflow Technology with static pressure up to 0.8 in W.C.
- Less than 2% air leakage
- Easy maintenance
- Quiet indoor operation
- Anti-corrosive fin coating

COMPATIBLE WITH

- 38MBRC Outdoor Unit

(p 60)

PREFERRED™
SERIES

Size: 36 / 48 / 60

KEY FEATURES

Unmatched Maintenance Simplicity

With a top panel and an indoor coil that can be easily removed, get faster access to the core parts of the unit needed for service. You only need to remove two screws!

Less Complex Electronics

Having only two integrated printed circuit boards means the electronic components are less complicated. One is the main control board, and the other is the function board for the 24V interface, dip switch, wired controller and LED display.

Easier Access to Electric Heater

This single-piece construction enables easy installation and maintenance.

Modular Slide Design

The indoor coil can be easily pulled out through the slide track for quick and easy maintenance.

CONTROLS

Wireless Remote Controller included with indoor unit

24V interface for third-party thermostat compatibility built-in

WARRANTY

Limited Warranty*

10-year limited to original purchaser on compressor and parts upon timely registration, otherwise 5 years.

*For residential applications. See warranty for full details.

SPECIFICATIONS:

40MBAB Air Handler				
Heat Pump				
System				
Size		36	48	60
Indoor Model		40MBABQ36XA3	40MBABQ48XA3	40MBABQ60XA3
Electrical				
Voltage-Phase-Cycle	V-Ph-Hz	208/230-1-60	208/230-1-60	208/230-1-60
Power Supply		Indoor unit powered from outdoor unit		
MCA	A.	5	7.5	9
Controls				
Wireless Remote Controller (° F / ° C Convertible)		Standard	Standard	Standard
Wired Remote Controller (° F / ° C Convertible)		Standard	Standard	Standard
Operating Range				
Cooling Indoor DB Min - Max	° F (° C)	60~90 (16~32)	60~90 (16~32)	60~90 (16~32)
Heating Indoor DB Min - Max	° F (° C)	32~86 (0~30)	32~86 (0~30)	32~86 (0~30)
Piping				
Pipe Connection Size - Liquid	in (mm)	3/8 (9.52)	3/8 (9.52)	3/8 (9.52)
Pipe Connection Size - Suction	in (mm)	5/8 (16)	5/8 (16)	7/8 (22)
Indoor				
Unit Width	in (mm)	21 (534)	21 (534)	24.5 (622)
Unit Height	in (mm)	49 (1245)	49 (1245)	53 (1346)
Unit Depth	in (mm)	21 (534)	21 (534)	21 (534)
Net Weight	lbs (kg)	129.63 (58.8)	132.5 (60.1)	164.02 (74.4)
Number of Fan Speeds		4	4	4
Airflow (lowest to highest)	CFM	865/971/1082/1188	906/1094/1282/1471	1135/1359/1582/1806
Sound Pressure - Cooling (lowest to highest)	dB(A)	41.4/44.0/48.5	44.6/47.7/51.0/53.7	45.7/47.5/51.2/53.3
Sound Pressure - Heating (lowest to highest)	dB(A)	33.9/39.0/45.1	43.4/47.8/50.5/53.8	39.4/44.9/50.1/51.0
Max Static Pressure	in W.C.	0.8	0.8	0.8
Field Drain Pipe Size O.D.	in (mm)	3/4 (19.1)	3/4 (19.1)	3/4 (19.1)

*Performance may vary based on the compatible outdoor units. See respective pages for performance data.

COMPATIBILITY:

Indoor Unit	40MBABQ36XA3	40MBABQ48XA3	40MBABQ60XA3
Outdoor Unit	38MBRCQ36AA3	38MBRCQ48AA3	38MBRCQ58AA3

Manufacturer reserves the right to discontinue, or change at any time, specification or designs without notice or incurring obligations.

38MURA Outdoor Unit & 40MUAA Air Handler

Preferred Series



SYSTEM FEATURES

- Anti-corrosive fin coating
- Traditional unitary line set sizes
- Quiet operation

OUTDOOR FEATURES

- Factory installed basepan heater
- Factory installed crankcase heater
- Low voltage controls
- 24V interface pre-installed
- Standard heat and high heat options
- Auto-restart function
- Condenser high-temperature protection

INDOOR FEATURES

- Modes: Cool, Heat, Dry, Fan, Auto
- 4-way installation (Upflow, Downflow, Right, Left)
- New aluminum coil
- Automatic airflow technology with static pressure up to 0.8 in W.C.
- Less than 2% air leakage
- Easy maintenance

Heat Pump with Basepan Heater

Inverter-driven, variable speed, rotary compressor

Up to 18.0 SEER2

Up to 10.0 HSPF2

Sizes: 18 / 24 / 30 / 36 / 48 / 60

KEY FEATURES

Minimal Footprint

A low-profile, unobtrusive outdoor unit makes this system an ideal option for homes with zero lot lines or limited outdoor space.

Whole-Home Solution

This versatile, energy efficient system can be easily retrofitted to combine with existing connections, providing an efficiency upgrade for your entire home.

CONTROLS

Built-in 24V interface for third-party thermostat control

OPTIONAL ACCESSORIES

Electric heater kit

7-Day Programmable Wired Controller

LIMITED WARRANTY*

10-year limited to original purchaser on compressor and parts upon timely registration. Otherwise, 5 years.

PREFERRED™
SERIES

*For residential applications. See warranty for full details.

SPECIFICATIONS:

38MURA Outdoor Unit							
Heat Pump (Standard Heat)							
System							
Outdoor Size		1.5T	2T	2.5T	3T	4T	5T
Outdoor Model		38MURAQ18AA3	38MURAQ24AA3	38MURAQ30AA3	38MURAQ36AA3	38MURAQ48AA3	38MURAQ60AA3
Electrical							
Voltage, Phase, Cycle	V/Ph/Hz	208/230-1-60	208/230-1-60	208/230-1-60	208/230-1-60	208/230-1-60	208/230-1-60
MCA	A.	16	19	20	24	34	34
Recommended Fuse Size	A.	20	20	25	25	35	35
MOPA - Fuse Rating	A.	20	30	35	40	50	60
Short Circuit Current Rating (SCCR)	kA	2.4	2.4	2.4	2.4	2.4	2.4
Operating Range							
Cooling Outdoor DB Min - Max	° F (° C)	5~130 (-15~55)	5~130 (-15~55)	5~130 (-15~55)	5~130 (-15~55)	5~130 (-15~55)	5~130 (-15~55)
Heating Outdoor DB Min - Max	° F (° C)	-5~-86 (-15~-30)	-5~-86 (-15~-30)	-5~-86 (-15~-30)	-5~-86 (-15~-30)	-5~-86 (-15~-30)	-5~-86 (-15~-30)
Piping							
Total Piping Length	ft (m)	98 (30)	164 (50)	164 (50)	213 (65)	213 (65)	213 (65)
Piping Lift*	ft (m)	65 (20)	82 (25)	82 (25)	98 (30)	98 (30)	98 (30)
Pipe Connection Size - Liquid	in (mm)	3/8 (9.52)	3/8 (9.52)	3/8 (9.52)	3/8 (9.52)	3/8 (9.52)	3/8 (9.52)
Pipe Connection Size - Suction	in (mm)	3/4 (19)	3/4 (19)	3/4 (19)	3/4 (19)	3/4 (19)	7/8 (22)
Refrigerant							
Refrigerant Type		R410A	R410A	R410A	R410A	R410A	R410A
Charge	lbs (kg)	3.53 (1.6)	4.63 (2.1)	6.72 (3.05)	8.16 (3.7)	10.4 (4.7)	10.8 (4.9)
Add'l Refrigerant (Between Std & Max Piping Lengths)	Oz/ft (g/m)	0.69 (65)	0.69 (65)	0.69 (65)	0.69 (65)	0.69 (65)	0.69 (65)
Metering Device		EEV	EEV	EEV	EEV	EEV	EEV
Outdoor Coil							
Face Area	Sq. Ft.	5	5.9	8.18	8.14	13.53	13.36
No. Rows		2	2	2.6	3	2	3
Fins per inch		20	20	18	18	18	18
Circuits		4	6	6	6	8	14
Compressor							
Type		Rotary Inverter	Rotary Inverter	Rotary Inverter	Rotary Inverter	Rotary Inverter	Rotary Inverter
Model		KSN140D21UFZ	KTM240D57UMT	KTF250D22UMT	KTF250D22UMT	KTQ420D1UMU	KTQ420D1UMU
Oil Type		VG74	VG74	VG74	VG74	VG74	VG74
Oil Charge	Fl. Oz.	14.9	22.7	22.7	22.7	47.3	47.3
Rated Current	RLA	9	14	16	17.6	24	24.6
Airflow & Sound							
Airflow	CFM	1,450	1,765	3,000	2,235	4,500	4,412
Sound Pressure	dB(A)	54	60	62	61	59	61

* Condensing unit above or below indoor unit

PERFORMANCE:

38MURA Outdoor Unit							
Heat Pump (Standard Heat)							
Outdoor Size		1.5T	2T	2.5T	3T	4T	5T
Cooling Rated Capacity	Btu/h	18,000	24,000	30,000	36,000	47,000	57,000
Cooling Cap. Range Min - Max	Btu/h	5400~18700	7500~26000	9500~33000	8900~38900	10500~48000	4400~60200
SEER2		17.0	17.0	17.3	16.9	15.8	14.7
EER2		10.9	10.5	10.6	10.1	8.8	8.8
Heating Rated Capacity (47° F)	Btu/h	18,000	26,000	31,000	36,000	55,000	60,000
Heating Rated Capacity (17° F)	Btu/h	11,500	20,700	20,000	20,500	36,500	36,000
Heating Rated Capacity (5° F)	Btu/h	10,000	17,000	17,800	21,000	36,500	34,800
Heating Cap. Range Min - Max	Btu/h	5600~18700	5600~30000	12200~32000	6000~36400	11700~57000	11400~63100
HSPF2		8.8	9.2	8.5	8.2	9.4	8.5
COP (47° F)	W/W	3.50	3.45	3.25	3.39	3.15	3.45
COP (17° F)	W/W	2.75	2.40	2.45	2.40	2.30	2.35
COP (5° F)	W/W	1.90	2.00	1.75	1.88	1.98	1.89

38MURA Outdoor Unit & 40MUAA Air Handler *continued*

Preferred Series

SPECIFICATIONS:

38MURA Outdoor Unit							
Heat Pump (High Heat)							
System							
Outdoor Size		1.5T - HH	2T - HH	2.5T - HH	3T - HH	4T - HH	5T - HH
Outdoor Model		38MURAQ18AB3	38MURAQ24AB3	38MURAQ30AB3	38MURAQ36AB3	38MURAQ48AB3	38MURAQ60AB3
Electrical							
Voltage, Phase, Cycle	V/Ph/Hz	208/230-1-60	208/230-1-60	208/230-1-60	208/230-1-60	208/230-1-60	208/230-1-60
MCA	A.	16	20.5	23	41	42	42
Recommended Fuse Size	A.	20	25	25	45	45	45
MOCP - Fuse Rating	A.	20	35	35	50	50	60
Short Circuit Current Rating (SCCR)	kA	2.4	2.4	2.4	2.4	2.4	2.4
Operating Range							
Cooling Outdoor DB Min - Max	° F (° C)	-22~130 (-30~55)	-22~130 (-30~55)	-22~130 (-30~55)	-22~130 (-30~55)	-22~130 (-30~55)	-22~130 (-30~55)
Heating Outdoor DB Min - Max	° F (° C)	-22~86 (-30~30)	-22~86 (-30~30)	-22~86 (-30~30)	-22~86 (-30~30)	-22~86 (-30~30)	-22~86 (-30~30)
Piping							
Total Piping Length	ft (m)	98 (30)	164 (50)	164 (50)	213 (65)	213 (65)	213 (65)
Piping Lift*	ft (m)	65 (20)	82 (25)	82 (25)	98 (30)	98 (30)	98 (30)
Pipe Connection Size - Liquid	in (mm)	3/8 (9.52)	3/8 (9.52)	3/8 (9.52)	3/8 (9.52)	3/8 (9.52)	3/8 (9.52)
Pipe Connection Size - Suction	in (mm)	3/4 (19)	3/4 (19)	3/4 (19)	3/4 (19)	3/4 (19)	7/8 (22)
Refrigerant							
Refrigerant Type		R410A	R410A	R410A	R410A	R410A	R410A
Charge	lbs (kg)	5.07 (2.3)	6.39 (2.9)	8.38 (3.8)	10.36 (4.7)	10.58 (4.8)	10.58 (4.8)
Add'l Refrigerant (between Std & Max Piping Lengths)	Oz/ft (g/m)	0.69 (65)	0.69 (65)	0.69 (65)	0.69 (65)	0.69 (65)	0.69 (65)
Metering Device		EEV	EEV	EEV	EEV	EEV	EEV
Outdoor Coil							
Face Area	Sq. Ft.	5.9	8.16	8.16	14.08	13.53	13.29
No. Rows		2	2	3	1.6	2	2.6
Fins per inch		20	20	20	18	18	20
Circuits		6	4	4	8	8	10
Compressor							
Type		Rotary Inverter	Rotary Inverter	Rotary Inverter	Rotary Inverter	Rotary Inverter	Rotary Inverter
Model		KTM240D5UMT	KTM240D5UMT	KTF310D43UMT	EAPQ420D1UMUA	EAPQ420D1UMUA	EAPQ440D1UMUA
Oil Type		VG74	VG74	VG74	VG74	VG74	VG75
Oil Charge	Fl. Oz.	22.7	22.7	33.8	49.4	49.4	43.96
Rated Current	RLA	10	15	16.5	32	33	28
Airflow & Sound							
Airflow	CFM	1,279	3,000	3,000	4,500	4,412	4,500
Sound Pressure	dB(A)	58	64	62	64	64	64

* Condensing unit above or below indoor unit

PERFORMANCE:

38MURA Outdoor Unit							
Heat Pump (High Heat)							
Outdoor Size		1.5T - HH	2T - HH	2.5T - HH	3T - HH	4T - HH	5T - HH
Cooling Rated Capacity	Btu/h	18,000	24,000	30,000	36,000	47,000	55,000
Cooling Cap. Range Min - Max	Btu/h	6900~21000	6400~27000	10400~33600	12000~47400	18000~48000	18000~56000
SEER2		18.0	17.4	16.2	16.0	15.6	15.3
EER2		12.4	11.7	10.0	10.0	8.2	8.8
Heating Rated Capacity (47° F)	Btu/h	19,000	24,000	33,000	40,000	50,000	59,000
Heating Rated Capacity (17° F)	Btu/h	13,000	18,600	20,400	29,500	35,000	42,000
Heating Rated Capacity (5° F)	Btu/h	16,500	22,700	24,100	34,500	46,000	50,000
Heating Cap. Range Min - Max	Btu/h	2800~21000	10100~31000	12000~37000	9000~57200	20000~55000	20000~68000
HSPF2		9.3	10.0	8.9	9.5	9.4	9.4
COP (47° F)	W/W	3.60	3.40	3.30	3.35	3.15	3.00
COP (17° F)	W/W	2.50	2.40	2.30	2.40	2.30	2.60
COP (5° F)	W/W	2.00	1.85	1.80	1.95	1.90	1.96

SPECIFICATIONS:

40MUAA Air Handler							
System							
Indoor Size		18K	24K	30K	36K	48K	60K
Indoor Model		40MUAAQ18XA3	40MUAAQ24XA3	40MUAAQ30XA3	40MUAAQ36XA3	40MUAAQ48XA3	40MUAAQ60XA3
Electrical							
Voltage, Phase, Cycle	V/Ph/Hz	208/230-1-60	208/230-1-60	208/230-1-60	208/230-1-60	208/230-1-60	208/230-1-60
MCA	A.	2.5	4	4.5	5	7.5	9
Recommended Fuse Size	A.	5	5	5	10	10	10
MOPA - Fuse Rating	A.	15	15	15	15	15	15
Operating Range							
Cooling Indoor DB Min - Max	° F (° C)	60-90 (16-32)	60-90 (16-32)	60-90 (16-32)	60-90 (16-32)	60-90 (16-32)	60-90 (16-32)
Heating Indoor DB Min - Max	° F (° C)	32-86 (0-30)	32-86 (0-30)	32-86 (0-30)	32-86 (0-30)	32-86 (0-30)	32-86 (0-30)
Piping							
Pipe Connection Size - Liquid	in (mm)	3/8 (9.52)	3/8 (9.52)	3/8 (9.52)	3/8 (9.52)	3/8 (9.52)	3/8 (9.52)
Pipe Connection Size - Suction	in (mm)	3/4 (19)	3/4 (19)	3/4 (19)	3/4 (19)	3/4 (19)	7/8 (22)
Refrigerant							
Refrigerant Type		R410A	R410A	R410A	R410A	R410A	R410A
Metering Device		EEV	EEV	EEV	EEV	EEV	EEV
Indoor Coil							
Face Area	Sq. Ft.	3	3	3.8	3.8	3.8	4.88
No. Rows		3	3	4	4	4	5
Fins Per Inch		20	20	20	20	20	20
Circuits		6	6	10	10	10	14
Airflow & Sound							
Number of Fan Speeds (low/med/high/turbo)		4	4	4	4	4	4
Airflow (lowest to highest)	CFM	488/529/576/618	629/694/759/824	712/806/894/1088	865/971/1082/1188	906/1094/1282/1471	1135/1359/1582/1806
Cooling Sound Pressure (low to high)	dB(A)	30.5/31.4/33.4/35.2	33.6/36.6/38.7/40.4	37.7/41.3/43.0/45.6	40.2/43.2/45.7/48.0	42.5/47.1/50.3/54.0	45.0/49.1/52.1/55.3
Heating Sound Pressure (low to high)	dB(A)	29.8/30.7/34.0/35.3	32.4/36.9/39.6/40.6	29.5/36.9/43.0/43.2	35.6/40.7/46.8/46.7	43.7/46.8/50.2/52.7	43.4/48.0/53.0/60.5
Max Static Pressure	in W.C.	0.8	0.8	0.8	0.8	0.8	0.8
Field Drain Pipe Size O.D.	in (mm)	3/4 (19.1)	3/4 (19.1)	3/4 (19.1)	3/4 (19.1)	3/4 (19.1)	3/4 (19.1)

Manufacturer reserves the right to discontinue, or change at any time, specification or designs without notice or incurring obligations.

315SA Outdoor Unit

Preferred Series



FEATURES

- Available in 208/230V-1, 208/230V-3 and 460V-3
- WeatherArmor™ cabinet – All-steel cabinet construction – Mesh coil guard
- Quiet outdoor operation, as low as 66 dB(A)
- Piping length up to 250 ft.
- Cooling operating range -20° ~ 125° F (-28° ~ 52° C) (w/ Low-Ambient Kit)
- Heating operating range 17° ~ 75° F (-8° ~ 24° C)

COMPATIBLE WITH

- Ducted Indoor Units

PREFERRED™
SERIES

Cooling Only - 315SA

Fixed-Speed Compressor

17.1 SEER2

Sizes: 18 / 24 / 30 / 36 / 48 / 60

KEY FEATURES

Longer Piping Lengths

Piping flexibility up to a total piping length of 213 ft. (65m.).

Low Ambient Cooling

With built-in low ambient kit or special designed PCB, outdoor fan speeds can be changed automatically based on the temperature. The unit can run cooling operation even in low ambient temperatures.

PHYSICAL DATA:

315SA							
Unit Size		18	24	30	36	48	60
Compressor Type		Scroll					
Refrigerant		Puron® (R-410A)					
Charge	lbs (kg)	7.50 (3.40)	6.80 (3.08)	8.70 (3.95)	9.40 (4.26)	10.50 (4.76)	10.50 (4.76)
Cond Fan		Propeller Type, Direct Drive					
Air Discharge		Horizontal					
Air Qty	CFM	1360	1530	1920	2615	2785	2785
Motor HP		1/3	1/3	1/10	1/4	1/4	1/3
Motor RPM	in (mm)	830	830	800	825	850	840
Cond Coil							
Face Area	Sq. Ft.	7.5	7.5	12.3	12.3	14.4	14.4
Fins per In.		20	20	20	20	20	20
Rows		2	2	2	2	2	2
Circuits		2	3	3	3	4	4
Vapor		5/8	3/4	3/4	7/8	7/8	7/8
Liquid		3/8					
Rated Vapor*		5/8	3/4	3/4	7/8	7/8	1-1/8
Max Liquid Line†		3/8					

* Units are rated with 25ft. (7.6m) of lineset length. Review the Vapor Line Sizing and Cooling Capacity Loss section when using other lineset sizes and lengths of lineset.

† Liquid Line Sizing for Cooling Only Systems with Puron® (R-410A) Refrigerant Tables.

Note: Review the unit's Installation Instructions for proper installation guidance.

Manufacturer reserves the right to discontinue, or change at any time, specification or designs without notice or incurring obligations.



FEATURES

- Control the ductless system using a third-party thermostat¹
- One 24V interface kit per indoor head²
- Keeps the inverter compressor operating as a variable-speed system³
- Rated for outdoor and indoor mounting
- Dry mode contact for active dehumidification control
- Remote on/off contact
- Auxiliary heat control through the thermostat⁴
- Diagnostic code display LEDs
- Power supplied through the outdoor unit

COMPATIBLE WITH

- 619PHB High Wall
- 619AHB High Wall
- 40MCCAQ One-Way Cassette
- 40MBCQ Cassette
- 40MBCAQ Cassette
- 40MBDQ Ducted
- 40MBDAQ High Static Slim Ducted
- 40MBFAQ & 40MBFQ Console
- 40MHHAC & 40MHHAQ High Wall

Included in:

- 40MBAB Air Handler
- 40MUAA Air Handler & 38MURA Outdoor Unit)

KSAIC0301230 Ductless Fan Coil unit connection

KSAIC0301230 Ductless Indoor + Outdoor Single Zone 208-230V

KEY FEATURES

Maintain Inverter Compressor Technology

The new 24V interface keeps the inverter compressor operating as a variable-speed system when using a third-party thermostat, making adjustments to maintain more consistent operation.

Easy & Flexible Installation

Experience quick and easy installation between either a single or multi-zone outdoor unit and the fan coil. The interface can be installed either indoors or outdoors.

Consumer Choice & Control

Consumers can choose the type of thermostat they want to use without adversely affecting the efficiency or performance of their ductless systems.

ACCESSORIES

115V Transformer RCD#11203103000393
(Used only on ductless systems with 115V power.)

¹ Third-party thermostats used with the 24V interface kit will replace the wireless remote controller included with the unit. Consult with dealer for more information.

² When using in a Multi-Zone System not all the indoor heads require a 24V interface kit.

³ A conventional 5-wire thermostat is required.

⁴ A secondary output is necessary for auxiliary heat control.

COMPATIBILITY:

The Second Generation of the 24V interface kit model number KSAIC0301230 is compatible with the ductless systems listed below. Before installation, check the compatibility of your ductless system. Product must be installed by a licensed HVAC technician.

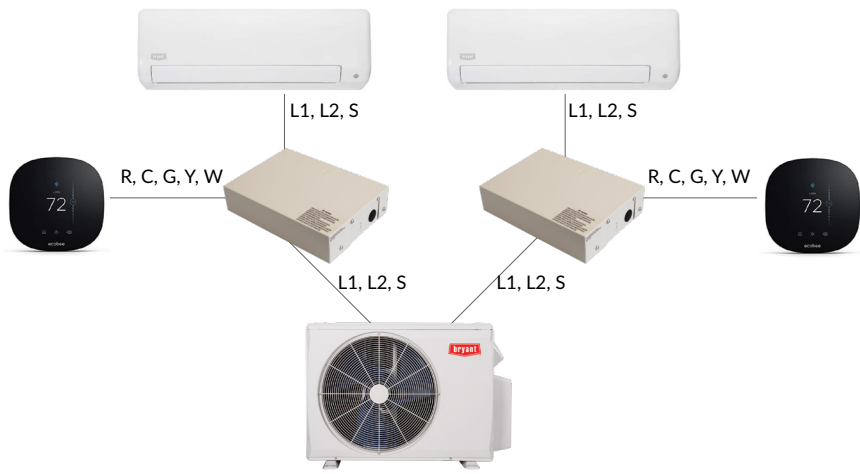
Type of Indoor Unit	Indoor Family Name	Single Zone Outdoor Family Name	Multi-Zone Outdoor Family Name	208/230V
High Wall	619PHB	38MPRB	38MGR	All Sizes
	619AHB	38MARB	38MGR	All Sizes
	40MHHA	38MHR	38MGR	All Sizes
Cassette	40MCCAQ	38MARB	38MGR	All Sizes
	40MBCQ	38MARB	38MGR	All Sizes
	40MBCAQ	38MARB	38MGR	All Sizes
Ducted	40MBDQ	38MARB	38MGR	All Sizes Except Size 58
	40MBDAQ	38MARB	38MGH	All Sizes Except Size 58
Console	40MBFQ	38MARB	38MGR	All Sizes Except Sizes 12 and 58

Note: The indoor unit requires an updated control board for compatibility with the 24V interface kit. High wall units starting with Serial #4316V10001 are shipped with the compatible control board. Ducted units starting with serial #4616V10001 are shipped with the compatible control board. For other model numbers not shown on the table above, please contact your ductless representative. Ducted size 58 console sizes 12 and 58 starting with serial #1419V1001 are shipped with compatible control board.







DUCTLESS SINGLE ZONE



DUCTLESS MULTI-ZONE



Controls

		HIGH WALL			CASSETTE			DUCTED		CONSOLE
Model #		619PHB	619AHB	40MHHA	40MBCQ	40MCCAQ	40MBCAQ	40MBDQ	40MBDAQ	40MBFQ
	KSACN0101AAA Wired Controller (Timer Function)				○	○	○		○	
	KSACN0601AAA Wired Controller (7-Day Programmable)	○ 9-12k								○ 9-12K
	KSACN0701AAA Wired Controller (7-Day Programmable)				○	○	○	●	●	○ 8-58K
	KSACN0801AAA Wired Controller (7-Day Programmable)	○ 18k	○ †							
	KSACN0901AAA Wired Controller (7-Day Programmable)			○						
	Third-Party Thermostat*	○	○	○	○	○		○	○	○

		HIGH WALL			CASSETTE			DUCTED		CONSOLE
Wi-Fi® Accessories Model #	Description	619PHB	619AHB	40MHHA	40MBCQ	40MCCAQ	40MBCAQ	40MBDQ	40MBDAQ	40MBFQ
KSAIF0201AAA	Wi-Fi High Wall Entry Tier – 18k ONLY			○						
KSAIF0301AAA	Wi-Fi High Wall Mid-Tier	‡	‡	○						
KSAIF0401AAA	Wi-Fi Cassettes, Ducted, Console			‡	○	○	○	○	○	○ 18-58
KSAIF0601AAA	Wi-Fi High Wall High Tier (Built-in with indoor unit)	●	○							

- Standard
- Optional

Notes:

† 7 Day programmable compatible with indoor units starting with Serial Number 0216V10001.

*Using 24V interface; Compatible with indoor units starting with Serial Number 4216V10001.

‡ Compatible with indoor units with Serial Number 0117V10001.

GLOSSARY OF TERMS

<p>24-Hour Timer Set the unit to start and stop automatically in a 24-hour period.</p>	<p>High Ambient Cooling The indoor space can be cooled to a desired, comfortable indoor temperature, even when outside temperatures reach up to 122° F.</p>
<p>Airflow Panel 360° air outlet creates a soft and gentle airflow, which circulates throughout the whole space and provides an even temperature distribution in the room.</p>	<p>High Heating Operation The high tier and mid-tier systems can be a primary heat source, with high heating down to -22° F, so when it's cold outside, it's warm inside.</p>
<p>Auto Defrosting Prevents the evaporator from freezing and maintains dehumidifying effect in low temperature environments.</p>	<p>Independent Vane Control Airflow direction from individual outlets can be controlled separately to achieve the optimal airflow based on a room's configuration.</p>
<p>Auto Restart Function If the air conditioner shuts off unexpectedly due to a power outage, it will restart with the previous settings automatically when the power resumes.</p>	<p>Inverter Technology With the inverter, the outdoor unit uses only the energy required to meet the desired temperature requirements of the indoor unit, thus lowering energy consumption.</p>
<p>Built-In Basepan Heater A heating belt is fitted on the base plate of the outdoor unit to prevent water accumulation, which improves heat transfer efficiency.</p>	<p>Louver Position Memory A horizontal louver will automatically move to the same position that was set the last time the unit was on.</p>
<p>Built-In Condensate Lift Pump A powerful, built-in drain pump can lift the condensing water up to 29 inches.</p>	<p>Low Ambient Cooling Even when it's cold outside, but warm inside, the air conditioner will keep the area cool—perfect for server rooms and commercial kitchens.</p>
<p>Control Box Inside the Cassette Easy maintenance with the box right inside the cassette indoor unit. The integrated design provides a more compact size for easier installation.</p>	<p>Refrigerant Leak Detection The indoor unit shows error code "EC" and stops automatically when refrigerant leakage is detected. This protects the compressor from high-temperature damage due to refrigerant leakage.</p>
<p>Convenient Temperature Controls An intuitive, easy-to-use remote control displays temperature and other functions on a bright, clear LCD screen.</p>	<p>Single and Multi-Zone Compatible A single zone outdoor unit can be paired with any indoor unit type. One multi-zone unit can be leveraged for up to five indoor units of any style.</p>
<p>Convertible Return Air Inlet The air inlet can be installed either at the back or bottom of the ducted unit, allowing for flexible installation to meet the needs of each job.</p>	<p>Sleep Mode This function enables the system to automatically increase cooling or decrease heating by around four degrees for the first two hours, then holds steady for the next five hours. After that, it will switch off. This function achieves both energy savings and comfort at night.</p>
<p>Crankcase Heater A heating belt is fitted on the compressor to prevent frosting water accumulation, which improves heat transfer efficiency.</p>	<p>Stepless Frequency Adjustment Precise control maintains a stable and constant room temperature while reducing the sound level and saving energy.</p>
<p>Diamond Outdoor Unit Design An innovative outdoor unit reduces noise level by more than 3 dB(A), with higher reliability, easier maintenance and improved performance.</p>	<p>Two-Way Draining Connections, piping and drainage can be installed from both the left and right on the high wall.</p>
<p>Eco Mode Provides the ultimate energy savings and a comfortable sleeping environment with an intelligent eight-hour night cycle program that saves up to 60% of energy.</p>	<p>Universal Matching Get maximum flexibility with up to five different indoor units connected to one outdoor unit. Maintain a different temperature in each room for ultimate comfort, with the best indoor unit choice for each. Universal matching units are also available for single zone outdoor units. One outdoor unit can match any type of indoor unit.</p>
<p>Extra-Low Temperature Heating A temperature sensor built into the remote controller will sense its surrounding temperature. The unit will adjust the room temperature more accurately to give you comfort.</p>	<p>Universal Matching Compared to an infrared remote controller, a wired controller can be fixed on the wall and makes air conditioner operation more convenient for larger setups or ducted units.</p>
<p>Follow Me A temperature sensor built into the remote controller will sense its surrounding temperature. The unit will adjust the room temperature more accurately to give you comfort.</p>	



bryantductless.com

A Carrier Company

©2023 Carrier. All Rights Reserved.

Wi-Fi® is a registered trademark of Wi-Fi Alliance. ENERGY STAR® is a registered trademark of the U.S. EPA. All trademarks and service marks referred herein are property of their respective owners.

01-DLS-021-BR-01 12/2023

